

DIBSHU

III

Inibaloi of Mountain Province

Published by
the Summer Institute of Linguistics
in cooperation with
the Bureau of Public Schools
and
the Institute of National Language
of
the Department of Education
Manila, Philippines
1961

PREFACE

This is the third of a series of three graded primers, designed to introduce to the speakers of Inibaloi the skill of reading in their own mother tongue.

The Inibaloi consonants which appear in this series of primers are as follows: b, d, dy, g, k, l, m, n, ng, p, r, s, sh, t, w, y. Hyphen (-) represents a glottal stop. It will not be indicated between vowels.

The pronunciation of these symbols is roughly equivalent to that of the corresponding symbols in the National Language with two notable exceptions: sh is pronounced as sh in the English word shoes and in some localities as ch in the English word choose; dy is pronounced as j in the English word judge.

The vowels a, i, and u are similar to those of the National Language. e is similar to the pepet vowel of Pangasinan.

These primers were prepared by Mr. and Mrs. David Huey, members of the Summer Institute of Linguistics. Special acknowledgement is due Mr. Moreno Molintas for his valuable assistance in the preparation and checking of these materials.

February, 1961
071-261-200c



Mauwang i bii.

Iman i kayabangtu.

Undaw shi payew.

Undaw shi payew a manduktu.



Iman i aba-kul.

Undaw i aba-kul shi payew.

Mauwang i aba-kul.

Nankayabang i aba-kul.

Undaw a manduktud payew.

Nanapsul i bii tan aba-kul.

Nanapsulerad shalan.

Tuy dewanmu,

kuwan ni aba-kul.

Undewak shiman.

Nakmanduktu.

Nakmanduktud payew,

kuwan ni bii.

Nakmanduktu ngu,

kuwan ni abe-kul.

Tiga mauwankita.

Ti undawkitad payew,

kuwan ni aba-kul pay.

Uwen, kuwan nima bii.

Ayshiy kadwak.

Ayshiy kadwak shi shelan.

Ayshiy kadwak a mauwang.

Antekutak.

Shakel a saludsud.

Sipaeray nauwang?

Tuy dawansha?

Ngantuy dawanshad payew?

Amtam a manduktu?

Mukaatngis inam a manduktu?

a	i	e	u
sha ka na	shi ngi		mu tu
nap wang bang man lan kad daw wak tam		yew	sul duk
am at ay			un

mauwang	shiman	shalan
kayabang	amtam	nanapsul
undaw	manduktu	ayshi
payew	kadwak	mukaatngi

Kuwan ni bii,
tudalay sengkapmu ina? .

Tagwi,
insungbat ni aba-kul.
Ayshila.
Na-kas amula.
Ayshiled kayabang ku.
Na-kas amulad shalan.

Kuwan ni bii shi nemnemtü,
na-kas day sangkap nen ina.
Na-kas amulad shalan.

Kuwan ni eba-kul,
mugaanap shiman.
Mugaanap shi shalan.
Balang num sepulenmu.

Kuwan ni bii,
shiyaka ina.
Undawak shiman.
Atngantaka ni anap.
Undawak angken tudalay kad-antu.
Balang num sepulenku.

Uwen, mugaanap shiman,
kuwan ni aba-kul muwan.
Balang num weran un-anmu.



Maaliy bii.
In-an ni aba-kul.
Waray sangkap shi takdaytu.

In-an ni aba-kul i sangkap.
Simpul ni biy sangkap.
Simpultud shalan.
Amanimdeng i aba-kul.
Abadeg i imdengtu.

Tudala suta sangkap ni aba-kul?

Ngantuy ingkuwan ni aba-kul su biin kadwatu?

Sipay simpul su ni sangkap?

Sipay amanimdeng?

Waray inatnganmun aba-kul?

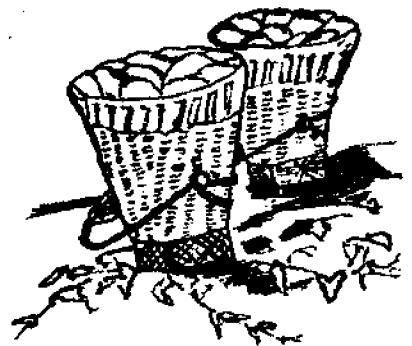
Kuwan ni aba-kul,
maptengkan anak.
Mapteng i nemnemu.
Mimutukerad payewsha.
Nanubdaeran shuwa.
Nanubday biid payewtu.
Nanubday.
Aba-kul shi payewtu.
Abayageran nanubda.
Abayagerad payew.
Nabdiyera ni ubda.
Nabdiyera shili.

Kuwan aba-kul,
naksheng i ubdam anak?
Uwen, Ina.
Ti unakadkita.

Shakel i dinuktu ni bii.
Shakel i dinuktu ni abe-kul.
Napnuy kayabang ni abe-kul.
Napnuy kayabang ni bii,
Napnuy kayabangshan shuwa.

Kuwan ni bii,
shakel i duktud kayabangmu ina.
Ambel-at a shiliy kayabangmu.

Uwen, ambel-at a shili,
insungbat ni aba-kul.





Mapteng i nemnem nima bii? Ngantuy?

Ngantuy abayangkanshad payew?

Pigan i inakadsha?

Ngantuy napnud kayabangsha?

a	i	e	u
na ma sha da ba wa ra	li pi shi di	ye	nu mu shu tu

wan ngan gan map nap nak nab yag		teng sheng kel bel	tuy nub
---	--	-----------------------------	----------------

am

maptengkan	nabdiyera	payewtu
nanubdaera	pigan	shakel
shuwa	naksheng	napnu
abayagkansha	shili	ngantuy



Kuwan ni bii,

agkaumpisi ni akad.
Ambel-at i dinuktum.
Shakel i dinuktum.
Napnuy kayabangmu ni duktu.
Ti agshiankugay ashum.
Atngantaka ni agshi.

Kuwan ni aba-kul,
uwen, tep makedsangka.

Inda ni biyy ashum a duktu ni aba-kul.
Amanimdeng muwan a shili suta aba-kul.

Inudyun ni bii kayabangtu.

Inudyun ni aba-kul i kayabangtu ngu.

Abadeg i kayabang ni aba-kul.

Utik i kayabang ni bii.

Suta kayabang ni aba-kul napnu ni duktu.

Suta utik a kayabang ni bii napnu ni duktu ngu.

Ambel-at i inudyun ni aba-kul.

Ambel-at i inudyun ni aba-kul.

Ambel-at i inudyun ni bii pay.

Agumpusi suta aba-kul.

Makedsang suta bii.

Makedsang amanakad shi shalan.

Sipay makedsang? Sipay agumpusi?

Siged dya anak suta bii? Ngantuy?

a	i	e	u
ma	si		nu
	shi		pu
		ked	shum
sang	tik	ged	gum
		wen	dyun

ag

agshi	inudyun
ashum	utik
makedsang	agumpusi
uwen	sigid

Nabdiy i aba-kul.
Piyantun manadyas.
Manadyaskita,
 kuwantu suta bii.

Uwen, manadyaskita.
Nabdiyak ngu.
Piyankun manadyas ngu,
 insungbat ni bii.

Inun-an ni biiy kiyew.
Inun-entud kilig ni shalan.
Shakel i bulung nunta kiyew.
Iman i kiyew shi kilig ni shalan.
Iman i sirumtu.
Manadyaskitad sirumtu.
Iman i kustum tungawantayu.
Manadyaskitad man,
 kuwan ni bii.

Simbi ni biiy sirum.

Simbi ni aba-kul i sirum.

Insaad ni biiy kayabangtu.

Insaad ni aba-kul i kayabangtu.

Timukung i aba-kul shi batu.

Timukung i biid batu ngu.

Timukungeran shuwad batu.

Nanadyaserad sirum.

Shakel i inun-ansha.

Waray shakel a titit.

Waray titit dya nanpatuk shi kiyew.

Ara, shakel i titit,

kuwan ni bii.

Kuwan ni aba-kul,
nanadyaskita ni abayan.
Ti undawkita muwan.
Ambel-at i kayabangtu.
Itunumka.
Itunum i kayabangku.

Uwen itunuk,
kuwan ni bli.

Itunumkay kayabangku ngu,
kuwan ni bli pay.

Uwen itunuk,
insungbat ni aba-kul.

Ngantuy piyan ni aba-kul?

Tuy kad-an ni kiyew?

Tuy nanadyasansha?

Tuy tinukungansha?

Ngantuy inun-ansha?

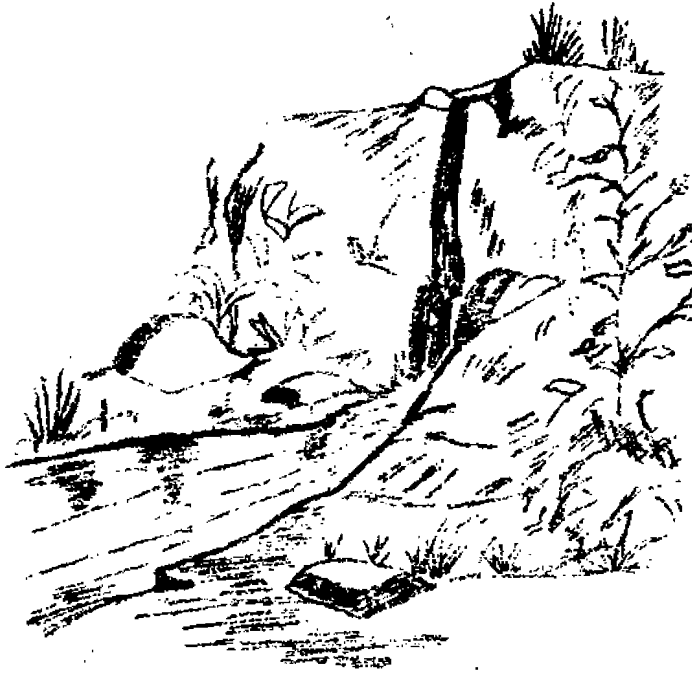
a	i	e	u
sha sa na dya ta	ki ti bi		mu nu tu yu
nan san wan yas	sim lig tit	yew	rum
ad	in		

nanadyasansha	sirum
simbi	kiyew
insaad	kilig
tungawantayu	timukung
titit	

Waray tebteb shi kilig ni shalan.
Shakel i shanum shi tebteb.
Malinis i shanum shi tebteb.
Suta bii piyantun maninum.
Mapteng e mainum i shanum shi tebteb,
kuwan ni aba-kul.

Suta bii insaadtuy kayabangtu muwan.
Suta aba-kul insaadtuy kayabangtu ngu.
Piyanshan maninum shi tebteb.
Waray taruy shi tebteb.
Waray paninum e tubung.
Insayang ni biiy tubung.
Naninum ni shanum.

Insayangtuy tubung muwan.
Inakantu ni aba-kul.
Naninum i aba-kul.



Intunu ni biiy kayabang ni aba-kul?

Ambel-at i kayabangsha?

Tuy naninumansha?

a

i

e

u

ta
ra
sa

tu

yang

tuy
ruy

dyun
bung
num

ad

in

intunu

naninum

insaadtuy

tebteb

shanum

wara

tubung

insayang

taruy



Nanakadera muwan.
Sinbiray abadeg a pa-duk.
Shakel i shenum shi pa-duk.
Makedsang i shenum shi pa-duk.
Maudsan nin i duktu,
kuwan ni aba-kul.

Uwen, insungbat ni bii.
Shakel i shenum shiay.
Sirum pay shiay.

Inudsanshay duktu shi kilig ni pa-duk.
Inudsanshay sangkap.

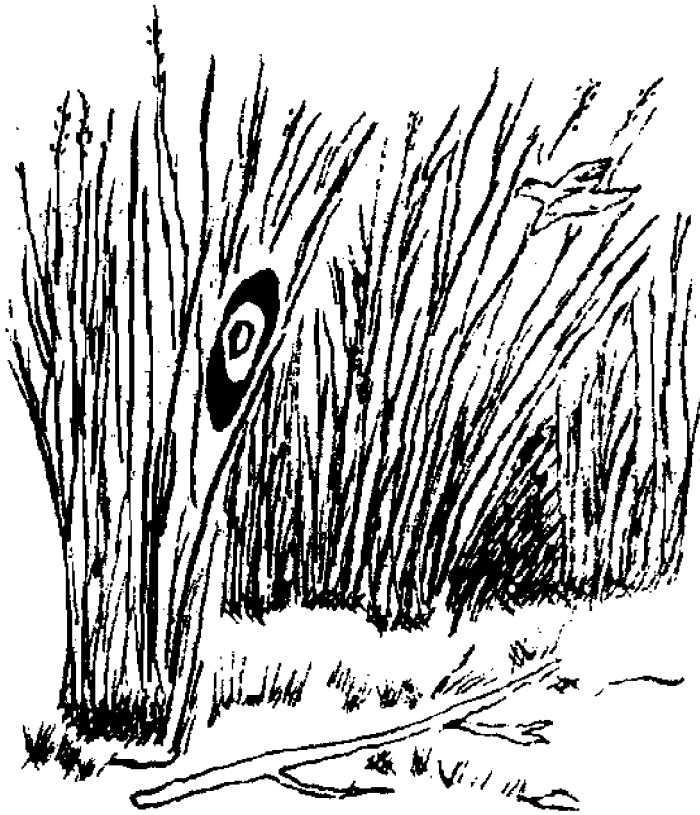
Kuwan ni aba-kul,
ayshi may maudsan.
Naksheng dya uras.
Ti undawkita muwan.
Kanuim, kanuim. Madabi nem akay.

Uwen. Madabi nem akay,
kuwan ni bii.

Un-im i amandeltep a segkit.

Inda ni biiy kayabangtu.
Inudyuntuy kayabangtu.
Inda ni aba-kul i kayabangtu.
Inudyuntuy kayabangtu.

Amanakad i bii tan aba-kul.
Shakel i inun-anshad shalan.
Na-na-gew i inun-an sha.
In-anshay na-na-gew a titit.
Waray titit dya amantedyab.
Waraeray nampetuk shi kiyew.
Waray inun-anshan mapteng a titit.
Erakamantedyab.
Undawerad ubungsha.
Waray ubungshad na-detan.
Kustu ni titit dya manubung shi na-detan.
Na-na-gew i shutshut ni titit.
Waray atuling tan amputi.
Waray ambasay shutshuttu.
Waray uutik tan abadeg.



Piyan ni aba-kul dya unmutuk shagus? Ngantuy?

Ngantuy na-na-gew a inun-anshad shalan?

Ngantuy inun-anshad na-detan?

Tuy kad-an ni ubung ni titit?

a	i	e	u
sha sa pa ka ra	shi		tu mu
bat nam tan man yab	kit ling	seg gew del tep ted	tuk shut bung sung
am ay			

segkit	insungbat	shagus
atuling	shiay	nampatok
ambasa	amandeltep	ubungsha
erakamantedyab	unmutuk	shutshuttu

Undaw muwan i bii ten aba-kul.
Shakel i dinabsanshad shalan.
Dinabsanshay tebtet tan pa-duk.
Dinabsanshay kiyew tan kadasan.
Abadeg i ashum.
Uutik i ashum.
Akayang i ashum.

Inun-an ni biiy bayabas.
Inun-antud kilig ni shalan.

Kuwantu, mamay bayabas ina.

Un-im kari. Shakel i bayabas.
Shekel i aduwem a bayabas.
Piyankuy aduwem a bayabas.

Nandelkas i bii ni aduwem a bayabas.
Nandelkas i aba-kul ni aduwem ngu.
In-iyanshay ashum shi kayabangsha.

Mimutuk i biid baliytu.

Mimutuk i aba-kul ngud baliytu.

Nayapsul i asu ni bii.

Nayapsul i asu ni aba-kul.

Amanwikiwik i asu.

Pinikpik ni biiy asutu.

Amanwikiwik muwan.

Insaad ni biiy kayabangtu.

Insaad ni abo-kul i kayabangtu.

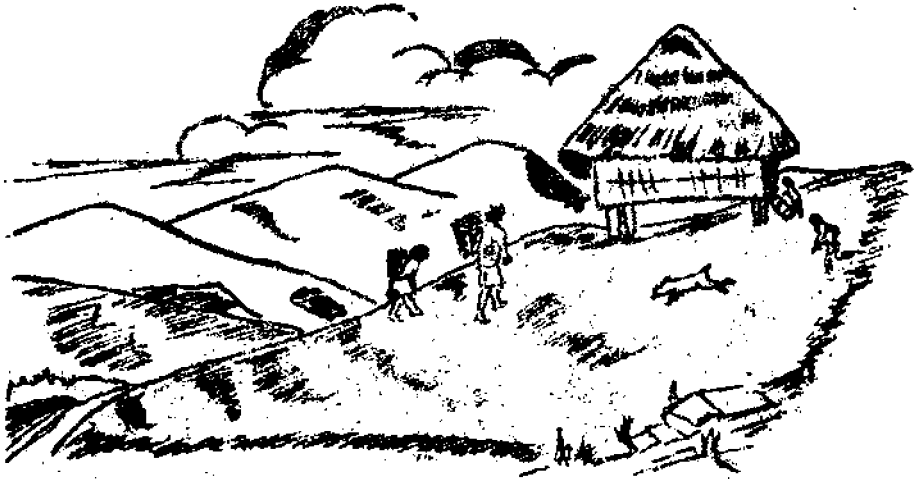
Napnuy duktud kayabangsha.

Weray bayabas shi kayabangsha.

Inakanshay bayabas su ni anak.

Amanimdeng i anak.

Erakamanimdeng a shili.



Ngantuy indared shalan?

Ngantuy nayapsul shi baley?

Amanimdengeray anak shi baliy? Ngantuy?

a

i

e

u

pa
ka
da

wi
ki
mi

mu
du

man
nan
san
yang

nik
pik
wik
nim

del
deng
wen
wem

tuk
duk

kas

aduwem

mimutuk

amanimdeng

nandelkas

amanwikiwik

kadasan

pinikpik

GLOSSARY

<u>Inibaloi</u>	<u>Tagalog</u>	<u>English</u>
abayag	matagal	long, period of time
adyas	magpahingá	to rest
aduwem	hinóg	ripe
agumpusi	di maari	impossible
ambasa	luntian	green
amtao	alaman	to know
atuling	madilim	dark
apsul	salubongin	to meet
ashum	iba	other
atang	tumulong	to help
ayshi	hindi	no
angkan	wala	none
anap	hanapin	to find
kayabang	buslô	basket
kadwak	kasama	companion
kadasan	gubat	forest
kiyew	kahoy	wood
kilig	gilid ng bukid	edge of field
deltep	pumitas ng bungang-kahoy	to pick fruit
duktu	kamote	camote
imdeng	maligaya	happy
inudyun	dalahin, pasán	load
muwan	mulí	again
mapteng	mabuti	good
nabdi	pagód, hapô	tired
naksheng	tapós	finished
napnu	punò	full
nemnem	isip, wari	mind
ngantuy	bakit	why
payew	bukid	field
pigan	kailán	when
pikpik	itatangi	to pet

<u>Inibaloi</u>	<u>Tagalog</u>	<u>English</u>
saad		to remove the basket (from one's back)
sayang	punuin	to fill
shalan	bulaós	trail
shiman	itó	this
shiya	mamalagi	to stay
sepulen	hanapin	to find
shuwa	dalawa	two
shushut	pakpák	feather
sirum	lilim	shade
shakel	morami	many
shanum	tubig	water
sigid	matamis	sweet
segkit	araw	sun
shagus	agád, madali	soon
sungbat	sagót, tugón	to answer
tagwi	hindi alám	do not know
tedyab	lipád	to fly
tebteb	batis, bukál	spring
titit	ibon	bird
tudala	saan	where
tungaw	upô	to sit
tubung		water container
ubda	gumawa	to work
uwang	kumutkút, maghu- kay (ng kamote)	to go to dig camote
wikiwik	igalaw-galaw	to wag (dog's tail)