

MAN-EDDAL KAMI

1

We Will Learn

Antipolo Ifugao



Summer Institute of Linguistics
Philippines

Translators

Publishers

1966

Published
in cooperation with
Bureau of Public Schools
and
Institute of National Language
of the
Department of Education
Manila, Philippines

38.2-666-125 - old code

6-049

38.2-666-125 - new code

PREFACE

This primer has been prepared to teach the Antipolo Ifugao people of Mountain Province to read and write. The phonics method of instruction as set forth in READING WITH PHONICS by Hay-Wingo has been adapted for use in teaching literacy to those speaking the Antipolo Ifugao dialect. Permission to do so has been kindly granted by the author Charles Wingo and the J. B. Lippincott Company.

The symbolization of the alphabet is as follows: a, b, d, e, g, h, i, k, l, m, n, ng, o, p, t, y, w, —(glottal stop). All letters are pronounced as their National Language equivalents.

These materials were prepared by Richard and Lou Hohulin, members of the Summer Institute of Linguistics.

William Atherton, Chairman
Literacy Committee
Summer Institute of Linguistics
Nasuli, Malaybalay, Bukidnon
Philippines

TO THE TEACHER

The preparation and presentation of the material in this primer combine principles from three methods: the phonic, the syllable, and the word patterning.

The introduction and teaching of each of the eighteen letters of the Antipolo Ifugao alphabet are controlled. Discrimination of the sound and symbol of each letter is taught. One word has been chosen to represent each letter. A picture of this word is associated with the word's initial sound and symbol to aid in the learning and recall of each letter.

This principle of teaching a sound and symbol for each letter is the foundation of teaching each succeeding principle: combining letters to form syllables, combining syllables to form words and combining words to form simple sentences.

The four vowels are introduced first since all Antipolo Ifugao words contain vowels. Then, the consonants are introduced one by one and the students are taught to combine each new consonant with the vowels and consonants that have already been learned.

The following instructions have been prepared to help the teacher use this primer most effectively.

Discrimination of sounds by hearing:

The teacher should teach the students to listen for the particular sound being taught by reading a number of words beginning with that sound. The words should be

pronounced with a slight time lag between the initial sound and the rest of the word. Next, words beginning with other sounds should be interspersed with the words beginning with the sound being taught. In order to determine whether the students are actually discriminating between the sounds, the teacher should ask the students to raise their hands when they hear a word beginning with a sound that is different from the one being taught.

Association of sound with its symbol:

Following the drill on discrimination of sounds by hearing, the teacher should hold up a picture illustrating the word which has as its beginning the sound being taught. For example, if the sound a is being taught, the teacher should hold up a picture of a dog (ahhu) and tell the class, "This is a picture of an ahhu. The first sound in this word is a, and its symbol is written like this." The teacher should then demonstrate carefully at a chalkboard or on a piece of paper how the letter is written. Each time a symbol is pointed out or written, the teacher should pronounce the sound.

Discrimination of symbols by seeing.

In teaching the students to discriminate between the symbols for the different sounds, it is good for the teacher to point out the distinctive features of each symbol. For example, the teacher may say: "The symbol for the a sound looks like this." (Print the symbol on a chalkboard or a piece of paper.) "It is a round ball with a short straight line." The students should be taught to examine a group of symbols and to place a circle around the particular

symbol being taught. Also, he may be taught to examine a list of words and to place a circle around each word beginning with the symbol being taught.

The combining of consonants and vowels into syllables.

When a consonant is introduced, it is printed separately so that the students may learn to recognize the symbol by itself. However, it is difficult to teach the consonant sounds alone. In pronunciation, it is best to combine the consonant with each of the vowels to form syllables. The teacher should explain that when a syllable is pronounced only the first sound is the one being emphasized.

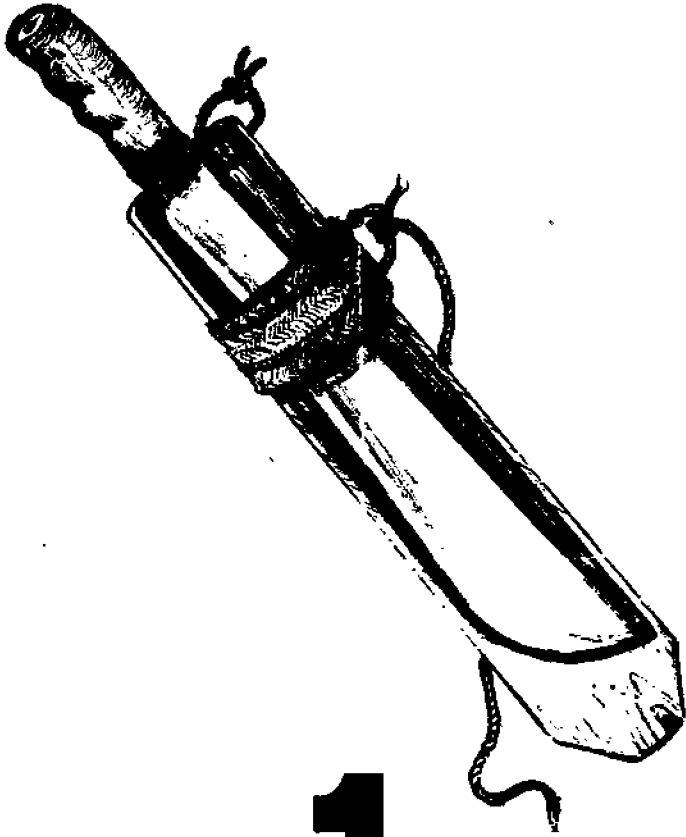
The combining of syllables into words.

When the syllables are mastered the formation of words is easy. The teacher should instruct the students to attack a word at the beginning, not the middle or the end. As a sentence is read from left to right, so too, a word is sounded from left to right.

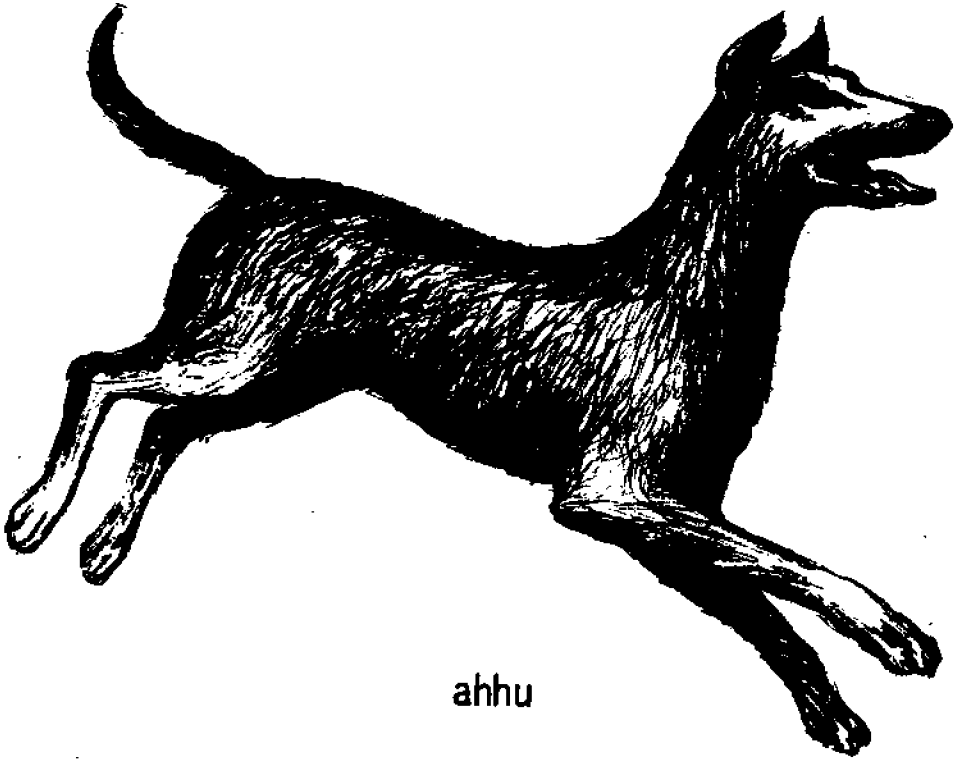
The combining of words to form simple sentences.

The teacher should introduce the combining of words to form simple sentences early in order to maintain the interest of the students and develop fluency from the beginning stages.

The teacher should review and test frequently throughout the teaching of the primer. The division and planning of class time is left to the discretion of the teacher, but should be geared to the capabilities of students.



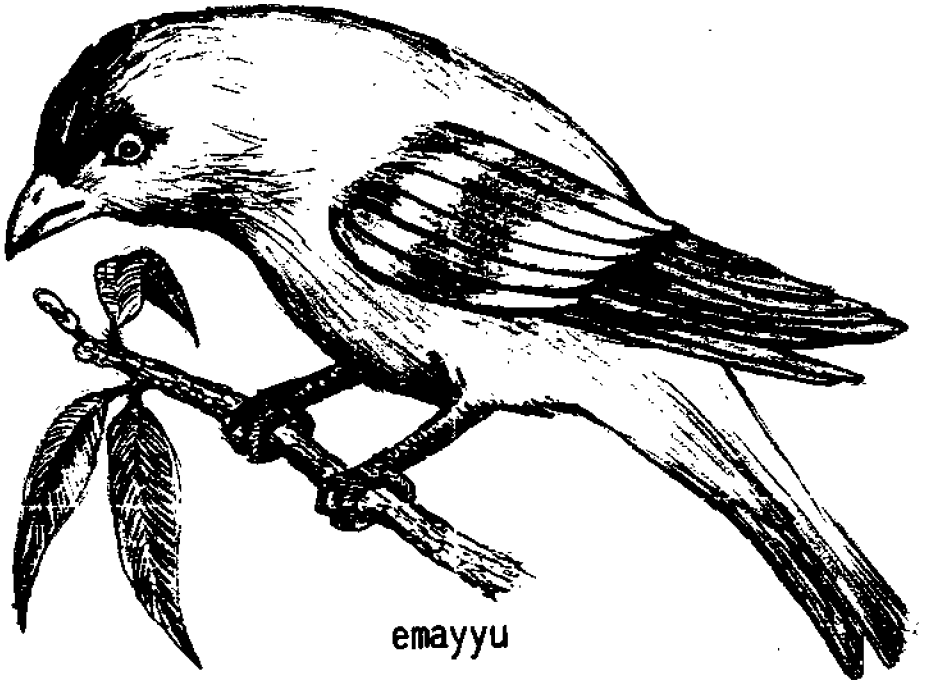
1



ahhu

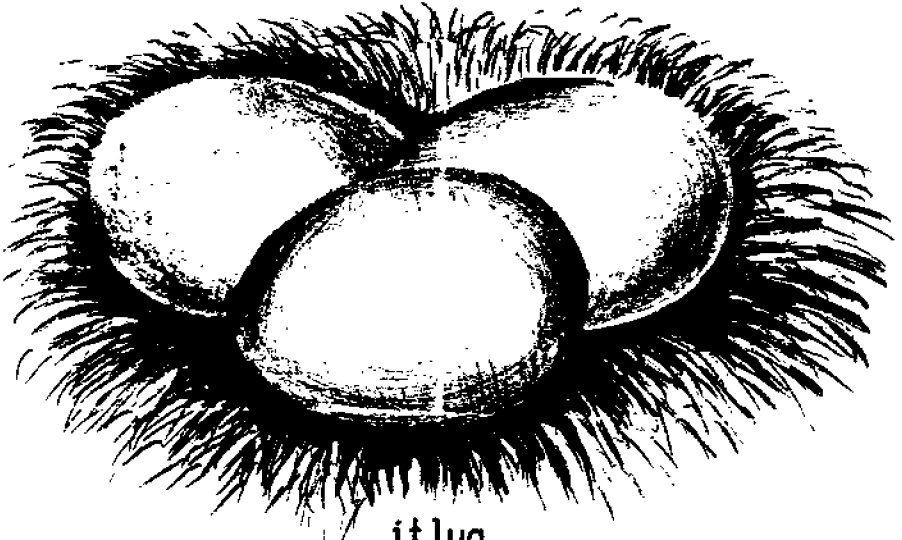
a:

A



e

E



itlug

i

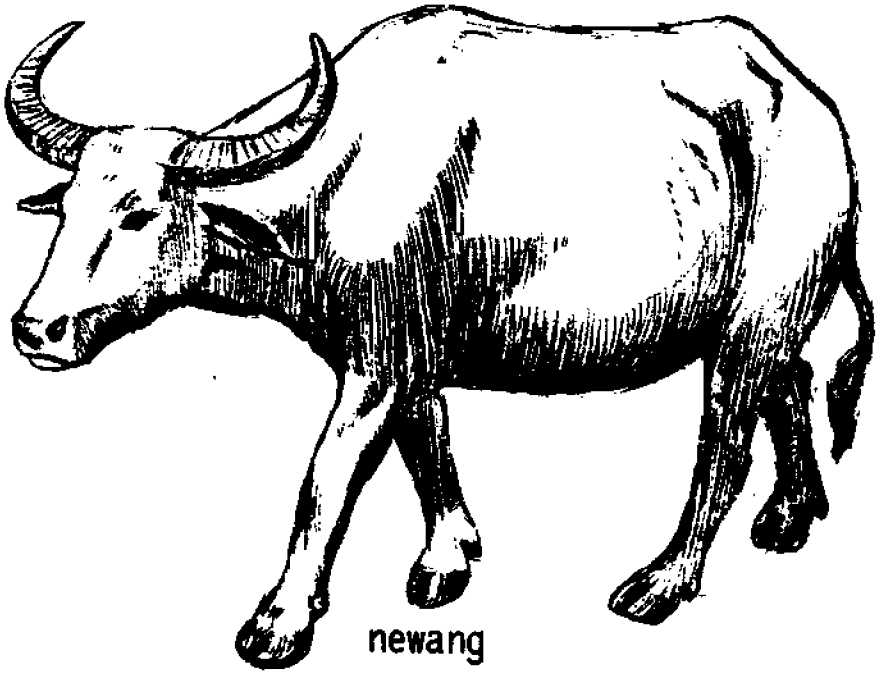
I



utut

u

U



n

N

n___a na

n___e ne

n___i ni

n___u nu

na

ne

ni

nu

a___ni ani

i___na ina

a
na

e
ne

i
ni

u
nu

a__ni
i__na

ani
ina



Hi ina.
Hi Anah.

na
nan

ne
nen

ni
nin

nu
nun

a—nin

anin

i—nan

inan

e—nan

enan



Hi ina.

Inan Anah.

Anin Anah.

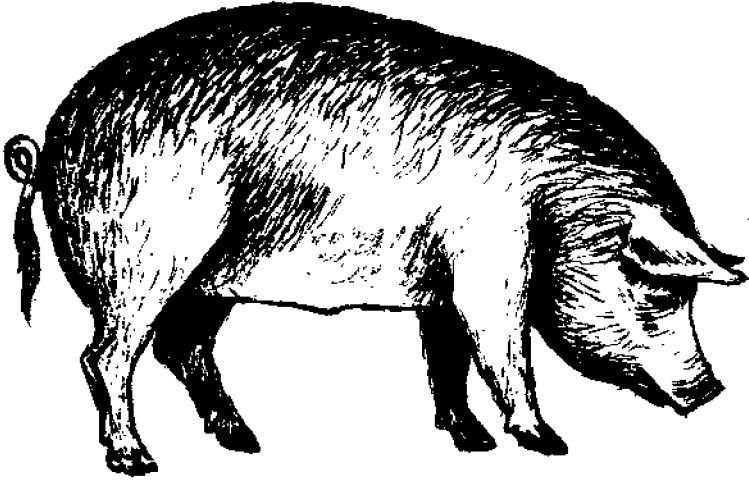
Anin inan Anah.

nan
enan

nin
anin

inan
enan

anin
enan



killum

k

K

k__a ka

k__e ke

k__i ki

k__u ku

ka
na

ke
ne

ki
ni

ku
nu

ku__ku kuku

ku__nu kunu

ke__na kena

kuku
kunu

kena
kunu

kuku
kena



Hi ina.

Hi Anah.

Hi ina et hi Anah.

Inan Anah .

Inan Anah kunu.

Anin ina kunu.

Anin Anah kunu.

Anin inan Anah kunu.

Anin ina et hi Anah kunu.

ka	ke	ki	ku
kan	ken	kin	kun
nan	nen	nin	nun

i__kan	ikan
e__kan	ekan

Ikan ina.

ku__kun	kukun
ki__nan	kinan



Kukun ina.

ikan	kukun	ekan	kena
ekan	kinan	enan	kunu

wada

wada

wada

Wada ani.

Wada anin ina.

Wada anin inan Anah.

Wada anin ina et hi Anah
kunu.

Wada ikan.

Ikan ina.

Wada ikan ina.

Wada ikan inan Anah.

Wada ikan ina et hi Anah
kunu.

Kinan ina ikan.

Kinan Anah ikan.

Kinan ina et hi Anah ikan.

Kinan ina et hi Anah ikan
kunu.

kan nan kan nen
ken nen nan ken

ken__nen kennen



Wada kennen.

Wada kennen ina.

Wada kennen Anah.

Kinan ina kennen et ya hu
ikan

Kinan Anah kennen et ya hu
ikan.

Kinan ina et hi Anah kennen.
Kinan ina et hi Anah kennen
kunu.

Kan inay, "Kinan ku kennen."

Kan Anah ey, "Kinan ku kennen."

a___k	ak
e___k	ek
i___k	ik
u___k	uk

ak___ak	ak-ak
uk___uk	uk-uk

Wada uk-uk ina.

Wada uk-uk inan Anah.

Wada uk-uk inan Anah kunu.

Kan inay, "Wada uk-uk ku."

Kan Anah ey, "Wada uk-uk ku."

ak-ak
uk-uk

uk-uk
ak-ak

ani	ina	kuku	ikan.
anin	inan	kukun	ekan

inan	kuku	ekan	kukun
enan	kunu	enan	kinan

kunu	kinan	ak-ak
kena	kennen	uk-uk

ey	ku	hi
et	ka	hu

a__k ak
k__i ki
ak__ki akki



Hi akki.

Wada hi akki.

Wada uk-uk akki.

Wada uk-uk akki kunu.

Kan inay, "Wada uk-uk akki."

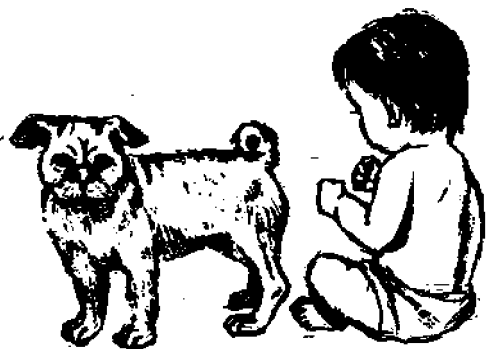
ak
uk

ek
ik

kan
kun

kin
ken

ak___kin akkin
uk___ken ukken



Wada akki et ya hu ukken.

Wada ukken Anah.

Wada akkin Anah.

Kinan ni ukken kennen.

Kinan akkin Anah kennen.

Kan Anah ey, "Wada ukken ina."

Kan inay, "Wada akkin Anah."

ak	ek	ik	uk
nak	nek	nik	nuk

a__nik	anik
i__nak	inak
e__nak	enak

Wada anik.

Wada anik et hi inak.

Kan Anah ey, "Wada anik."

Kan inay, "Wada anik et hi
Anah."

anin	inan	enan
anik	inak	enak

ikan	ekan	ak-ak
inak	enak	uk-uk

nan__ani nan-ani

Nan-ani inan Anah kunu
Nan-ani hi inak et hi Anah.
Nan-ani hi inak di anik.

nan__enan nan-enan

Nan-enan hi Anah.
Nan-enan hi ina kunu.
Nan-enan hi ina et hi Anah.

Kan inay, "Nan-enan hi Anah."
Kan Anah ey, "Nan-ani inak."

ani enan nan-ani
nan-ani nan-enan nan-enan

nan__ak-ak nan-ak-ak

Nan-ak-ak hi Anah di ani.

Nan-ak-ak hi ina di anik.

Nan-ak-ak hi Anah di anik,
kunu.

nan__uk-uk nan-uk-uk

Nan-uk-uk hi Anah et hi akki.

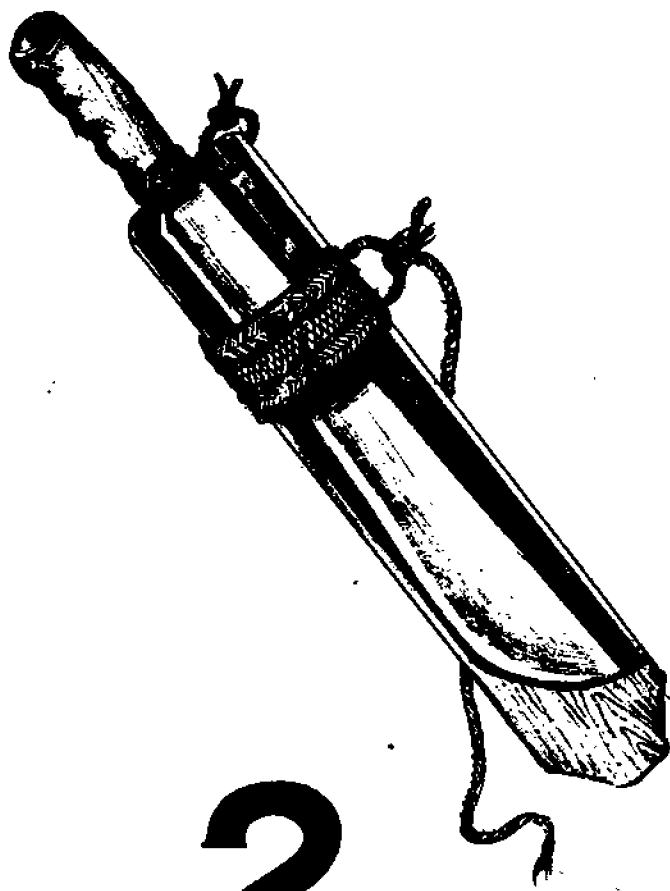
Nan-uk-uk hi akkin Anah.

Nan-uk-uk hi akki et hi inak.

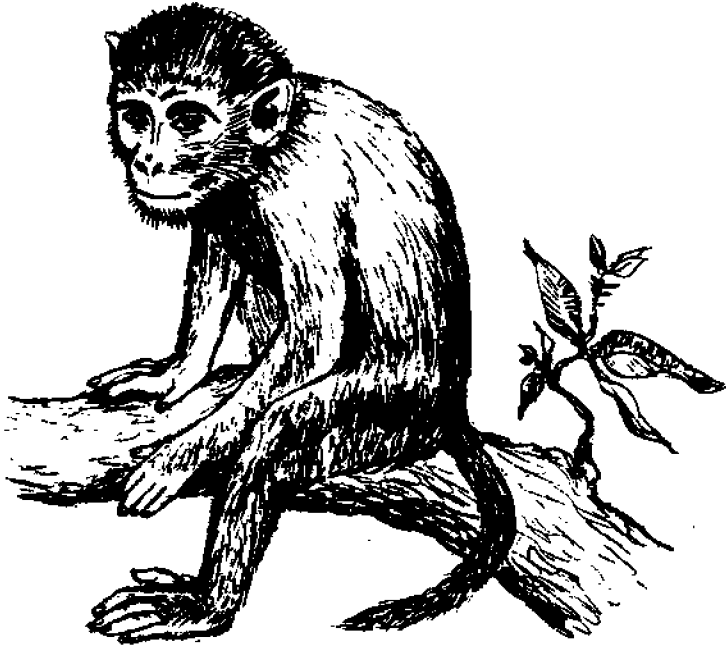
Kan inay, "Nan-ak-ak hi
Anah."

Kan Anah ey, "Nan-uk-uk hi
inak."

ak-ak uk-uk nan-ak-ak
nan-ak-ak nan-uk-uk nan-uk-uk



2



tadaw

t

T

t__a ta
t__e te
t__i ti
t__u tu

ta te ti tu

a__tu atu
u__ta uta
i__ta ita

Neatu hi akki et hi inak.
Neatu hi akkin uk-uk.

Kan inay, "Nan-uk-uk ita."
Kan inay, "Neatu ita."

ani atu uta
ina uta ita

a__t	at
e__t	et
i__t	it
u__t	ut

at	et	it	ut
ak	ek	ik	uk

at__tu	attu
--------	------



Attu hi akki?
 Attu hi inetu?
 Wada hi akki et hi inetu di ehpen.

Neatu hi akki et hi inetu kunu.
 Kan inay, "Neatu ita."

atu	akki	atu	akkin
attu	attu	uta	ukken

at
tat

et
tet

it
tit

ut
tut

i—tit
u—tut

itit
utut



Wada itit.

Itit ni utut.

Attu utut?

Wada utut di ehpen.

Kinan ni utut ikan.

Kinan ni utut kennen ina.

Kan tuy, "Kinan ni utut kennen ku."

anin
inan

itit
utut

anin
itit

at
kat

et
ket

it
kit

ut
kut

i ___ ket

e ___ ket

e ___ kut

u ___ kat

iket

eket

ekut

ukat

Wada ^{small}eket ni kenne*n*. There is a little *good*
Kinan ni ukken eket ni kenne*n* ku. *is puppy*

Attu iket ni ukken? Where is the puppy tied?
Wada iket ni ukken di ehpen. the puppy is tied down
below

Wada ^{low}ekut ni ikan. There are ^{some}a fish fish.
Wada ekut ni utut di ehpen there's *some* *not* down
below.

iket
eket

ekut
utut

iket
itit

ukat
eket

ta
tak

te
tek

ti
tik

tu
tuk

tak—tak
tek—tek
tik—tik
tuk—tuk

taktak
tektek
tiktik
tuktuk

Wada ekut ni tiktik.
Attu ekut ni tiktik?

Wada tiktik di ehpen.
Wada tiktik et utut di ehpen.

ak-ak
taktak

tektek
tiktik

taktak
tuktuk

uk-uk
tuktuk

taktak

tektek

tiktik

tuktuk



Attu hi inak et hi akki?
Wada hi akki et hi inak di anik.

Netaktak hi inak.
Netaktak hi inak et hi akki.

Neatu hi ina et hi akki.
Kan inay, "Neatu ita."

Netuktuk hi akki.
Netuktuk hi akki kunu.

ani
anin

inay
inan

kuku
kukun

enan
ekan

ikan
ekan

anik
enak

inan
inak

ak-ak
uk-uk

akkin
ukken

kukun
kinan

ita
itan

atu
uta

atu
attu

itit
utut

iket
eket

ukat
ekut

taktak
tektek

tiktik
tuktuk

neatu
inetu

netaktak
netuktuk

nan-ani
nan-enan

nan-ak-ak
nan-uk-uk

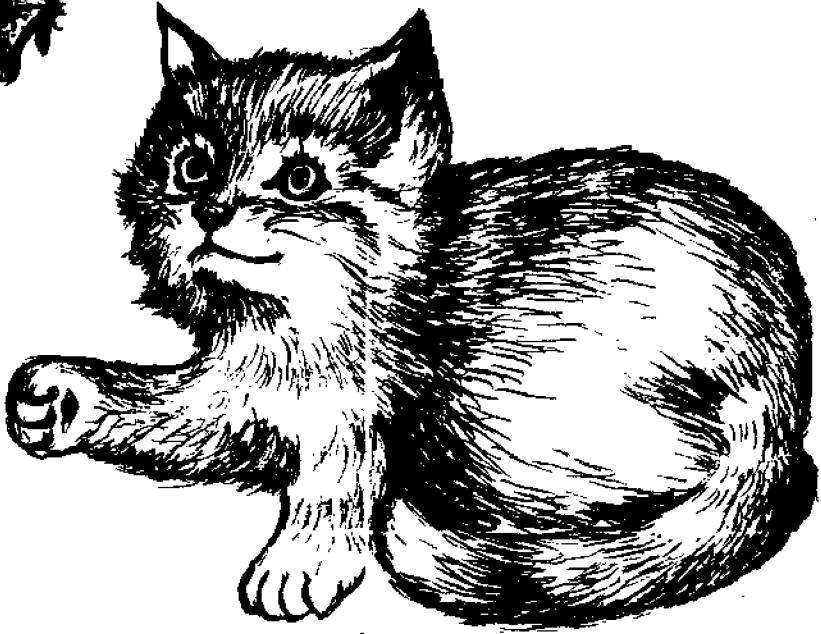
Nan-ani hi inetu ey netaktak.
Nan-ani hi inak ey netaktak.

Netuktuk hi Anah ey neatu.
Netuktuk hi inak ey neatu.

Nan-ak-ak utut di anik ey kinan tu ekut.
Nan-ak-ak hi Anah di anik et kan tuy,
"Kinan utut ekut."

Nan-uk-uk hi Anah et hi akki tu.
Kan inay, "Nan-uk-uk hi Anah et hi akki tu."

Nan-enan hi ina et hi Anah.
Kan inay, "Nan-enan hi Anah."



puha

p

P

p__a	pa
p__e	pe
p__i	pi
p__u	pu

a__pu	apu
i__pu	ipu
e__pa	epa
u__pa	upa

Netaktak hi apun ekut.
Netaktak hi apu et hi Anah di anik.

Neatu hi apun ekut.
Neatu hi apu et hi Anah.

Neupa hi apu.
Neupa hi apu et hi Anah.

apu
ipu

epa
upa

epa
ipu

ipu
upa

pa
na
ka
ta

pe
ne
ke
te

pi
ni
ki
ti

pu
nu
ku
tu

pe__nu
pi__nu
pi__tu
pa__na

penu
pinu
pitu
pana

Wada pitun tiktik.
Wada pitun tiktik di ehpen.

Neupa pitun tiktik.
Neupa pitun tiktik di ehpen.

penu
pana

pitu
pinu

pitu
penu

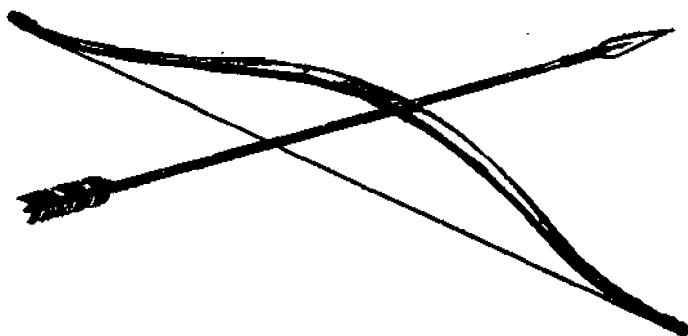
pana
pinu

penu

pinu

pitu

pana



Wada pana. Panan apu.

nan—pana

nampana

Wada pitun tiktik di ehpen.

Nampanan apu hu tiktik.

Nampanan apu hu pitun tiktik.

Kinan nan hi apu et hi inak hu tiktik.

Kinan nan hi akki et hi inetu hu tiktik.

nampanan

nan-ak-ak

neatu

netaktak

nan-enan

nan-uk-uk

neupa

netuktuk

at
ap

et
ep

it
ip

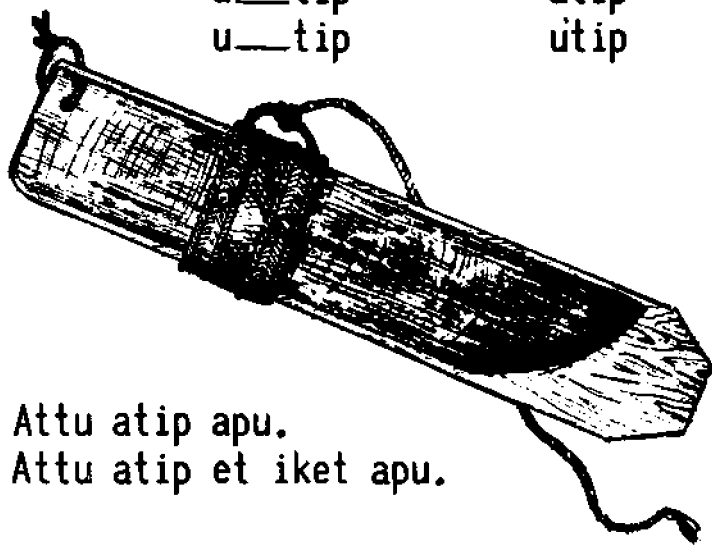
ut
up

t__ap
t__ep
t__ip
t__up

tap
tep
tip
tup

a__tep
a__tip
u__tip

atep
atip
utip



Attu atip apu.
Attu atip et iket apu.

Wada atip apu di atep.
Wada atip et iket apu di atep.

eket
ekut

iket
ukat

atep
atip

utip
atep

atep

atip

utip

nan—utip

nan-utip

Nan-utip utut di atep.

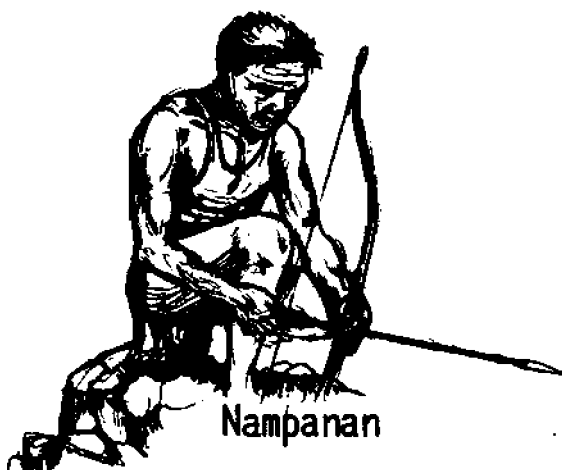
Nan-utip ukken di ehpen.

Nan-utip utut tep neupa.

Nan-utip ukken tep neupa.

Nampanan apu hu tiktik di atep.

Nampanan apu hu utut di atep.



netaktak

neatu

nan-ak-ak

nan-enan

netuktuk

neupa

nan-uk-uk

nan-utip

tak	tek	tik	tuk
tat	tet	tit	tut
tap	tep	tip	tup

tap—tap
 tep—tep
 tip—tip
 tup—tup

taptap
 teptep
 tiptip
 tuptup

nan—taptap

nantaptap

Nantaptap ukken.

Nantaptap ni ukken hu atip.

Nantaptap ni ukken hu atip tep neupa.

Nantaptap ni ukken hu iket tep neupa.

Nan-utip ukken ey nantaptap tu hu ikan ku.

Nan-utip utut ey nantaptap tu hu ikan ku.

taptap	tiptip	teptep	taptap
teptep	tuptup	tiptip	tuptup

upa
uta

apu
atu

epa
ita

atu
attu

itit
utut

iket
ukat

ekut
utut

eket
atep

atep
utip

atip
itit

apu
ipu

epa
upa

penu
pana

pitu
pinu

taktak
tuktuk

tektek
tiktik

tektek
teptep

tuktuk
tuptup

taptap
teptep

tiptip
tuptup

Attu hi apu? Netaktak hi apu. Nampanan
apu hu pitun tiktik. Neatu hi apu et neupa.

Attu hi Anah? Netaktak hi Anah tep
nan-ani di ehpen. Nan-ak-ak hi Anah di anik.
Nan-enan anin Anah di ehpen.

Nantaptap ni ukken hu ikan ku. Kinan tu
eket ni kennen.ku. Nantaptap ukken hu atip
apu. Attu iket ni ukken.

Wada itit ni utut. Kinan utut eket ni
kennen ku. Nan-utip utut di atep.

Nan-uk-uk hi akki et hi inetu. Kan inay,
"Nan-uk-uk ita." Attu hi inetu? Netuktuk hi
akki ey neupa.

nat
kat
tat
pat

net
ket
tet
pet

nit
kit
tit
pit

nut
kut
tut
put

e__pat
i__pit

epat
ipit



Epat ni utut.

Attu ipit ni utut?
Wada ipit ni utut di anik.

Nan-utip epat ni ukken.
Nan-utip epat ni utut.

itit
ipit

ukat
epat

atep
epat

atip
ipit

pat
pak

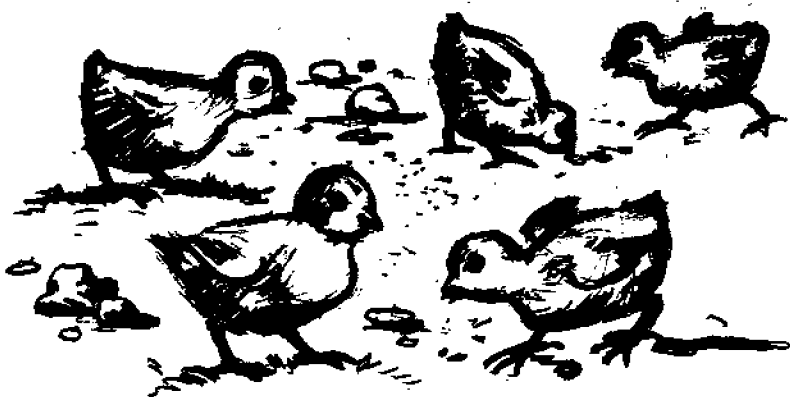
pet
pek

pit
pik

put
puk

pak— pak
pek— pek
pik— pik
puk— puk

pakpak
pekpek
pikpik
pukpuk



Wada pikpik di atep.
Wada pitun pikpik di atep.
Wada epat pikpik di ehpen.

taktak
pakpak

tektek
pekpek

tiktik
pikpik

tuktuk
pukpuk

pakpak

pekpek

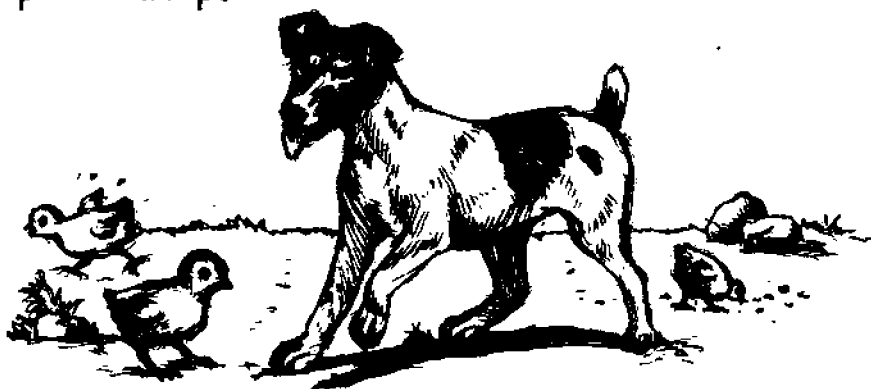
pikpik

pukpuk

in__ukat

inukat

Wada pikpik di atep. Wada pitun pikpik di atep. Inukat nan hi apu hu pikpik. Inukat nan hi apu pitun pikpik. Netuktuk hi apu di atep.



Wada pitun pikpik di ehpen. Wada ukken di ehpen. Neupa pikpik. Neupa ukken teay kinan ni ukken pikpik. Kinan tu epat ni pikpik.

taptap

teptep

tiptip

tuptup

taktak

tektek

tiktik

tuktuk

pakpak

pekpek

pikpik

pukpuk

ita
uta

neatu
inetu

atu
attu

itit
utut

tuktuk
pukpuk

taktak
pakpak

tektek
pekpek

tiktik
pikpik

iket
eket

ekut
ukat

apu
ipu

epa
upa

penu
pana

pinu
pitu

atep
utip

atip
utip

taptap
teptep

tiptip
tuptup

tiptip
tiktik

tuptup
tuktuk

Nan-ak-ak hi inak et hi apu di anik.

Nan-uk-uk hi Anah et hi akki tu.

Netaktak hi inetu tep netuktuk hi akki tu.

Neatu hi ina et neupa.

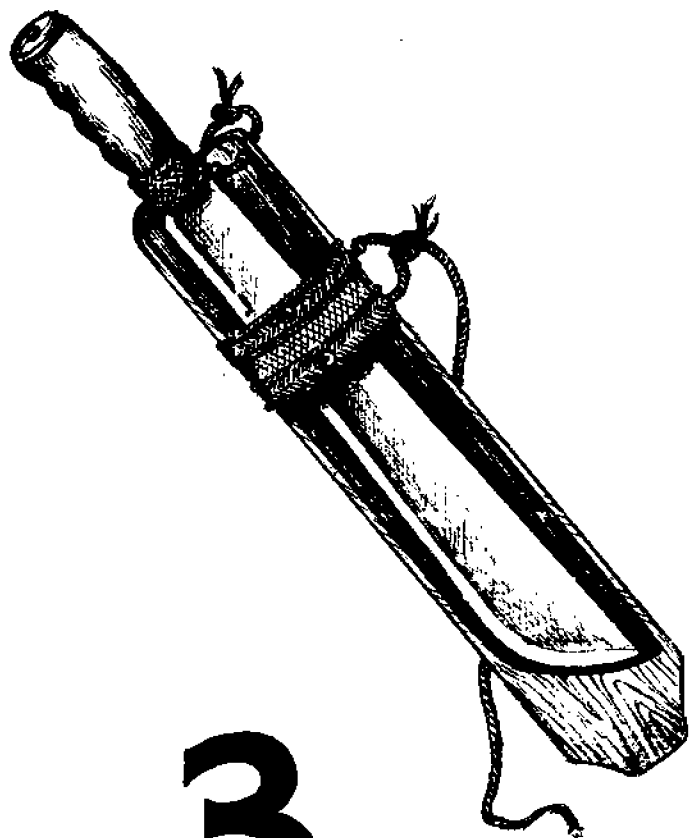
Nantaptap ni ukken hu atip apu.

Inukat nan hi apu hu epat ni pikpik.

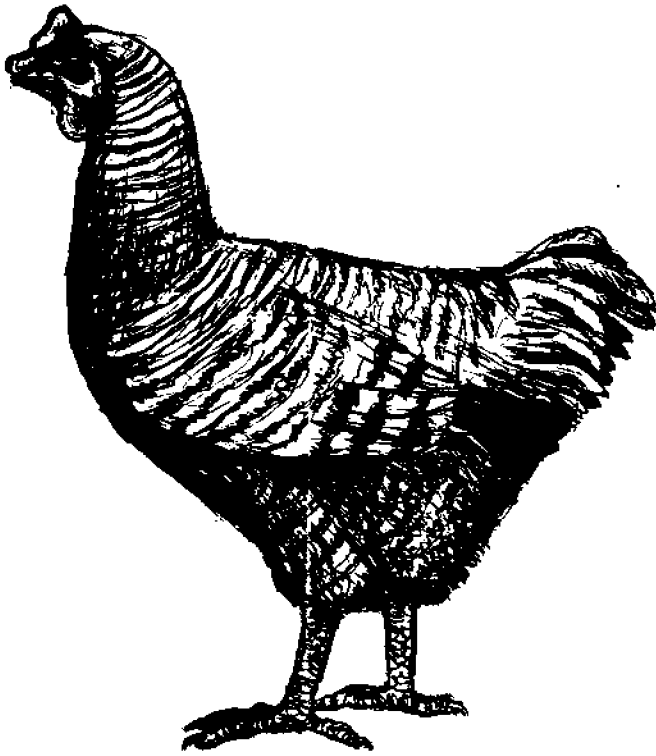
Nan-utip utut di atep teay kinan tu kennen ku.

Nampanan apu hu pitun tiktik.

Nan-enan anin Anah di ehpen.



3



manuk

m

M

m__a ma
m__e me
m__i mi
m__u mu

a__ma ama
u__ma uma



Hi ama.

Netaktak hi ama.
Neatu hi ama et neupa.

nan__uma nan-uma

Nan-uma hi apu et hi ama.
Nan-uma hi ina et hi Anah

ama	nan-uma	upa	epa
uma	nan-enan	uma	ama

nan
man

nen
men

nin
min

nun
mun

a__man
e__min

aman
emin

Netaktak aman Kummah.
Nan-enan aman Kummah.

Inukat nan hi aman emin.
Inukat nan hi aman emin hu pikpik.

am

em

im

um

im__men

immen

Immen hi ama nan hi Kummah.
Immen hi ina nan hi Anah.

aman
emin

inan
aman

anin
emin

immen
emin

Nantaptap ni ukken hu ipit ni utut.
Nantaptap ni ukken hu atip ama.

Inukat nan hi apu hu epat ni pikpik.
Inukat nan hi aman Kummah hu pitun pikpik.

Kinan ni utut hu ikan ku teay nan-utip.
Kinan ni utut hu eket ni kennen ku teay
nan-utip.

Netaktak hi ama tep nan-uma.
Netaktak hi aman Kummah tep nan-uma.

ma
mak

me
mek

mi
mik

mu
muk

mak—mak
mek—mek
mik—mik
muk—muk

makmak
mekmek
mikmik
mukmuk

makmak
pakpak
taktak

mekmek
pekpek
tektek

mikmik
pikpik
tiktik

mukmuk
pukpuk
tuktuk

kaw

kaw

kaw

Kaw neatu ka?

Kaw neupa ka?

Kaw nan-ak-ak hi ama di anik?

Kaw nan-uk-uk hi akki tu et hi inetu?

Kaw nantaptap ni ukken hu atip ku?

Kaw inukat nan hi apun emin hu pikpik?

Kaw nan-utip utut di atep?

Kaw netuktuk hi akki?

Kaw nampanan Kummah hu tiktik?

Kaw nan-enan anin Anah di ehpen?

Kaw nan-uma ama di ehpen?

ma ___ nuk
ma ___ tek

manuk
matek



Kaw wada manuk mi?
Wada epat ni manuk mi.

Inukat nan hi ama pitun pikpik ni manuk mi.
Inukat nan hi aman emin hu pikpik ni manuk mi.

Wada matek di ehpen.
Wada ekut ni matek di ehpen.

manuk
matek

makmak
mekmek

mikmik
mukmuk

am	em	im	um
nam	nem	nim	num
pam	pem	pim	pum

e	_____nem	enem
i	_____num	inum
i	_____nam	inam



Um-inum hi ina.
Um-inum hi inam et hi ama.

Wada enem ni manuk mi.
Wada enem ni pikpik ni manuk mi.

a	_____pum	apum
---	----------	------

Kaw um-inum hi apum?
Kaw um-inum hi apum et hi inam?

enem	ina	apu	inum
inum	inam	apum	enem

am
nam
kam

em
nem
kem

im
nim
kim

um
num
kum

ta___nem
nem___nem

tanem
nemnem

Kaw nantanem hi inam?
Em, Nantanem hi inak.

Kaw nantanem hi apum?
Em, Nantanem.

ak___kim

akkim

Kaw nan-uk-uk hi akkim?
Kaw neupa hi akkim?

tanem
nemnem

nemnem
enem

tanem
akkim

inum
apum

akkin
akkim

apu
apum

inam
amam

inum
um-inum

tanem
nantanem

nemnem
enem

ama
uma

emin
immen

manuk
matek

epat
ipit

utip
atip

utip
atep

taktak
pakpak
makmak

tektek
pekpek
mekmek

tiktik
pikpik
mikmik

tuktuk
pukpuk
mukmuk

taptap
teptep

tiptip
tuptup

makmak
mekmek

mikmik
mukmuk

man__ipit
man__ak-ak
man__nemnem

man-ippit
man-ak-ak
mannemnem

Man-ippit hi Anah.
Man-ippit hi Anah et hi inam.

Man-ak-ak utut di anik.
Man-ak-ak utut et ukken di anik.

Mannemnem hi Kummah.
Mannemnem hi Kummah et hi ama.



Man-ippit hi Anah.

ipit
manippit

ak-ak
man-ak-ak

nemnem
mannemnem

ka__man__ipit
ka__man__ak-ak
ka__man__nemnem

kaman-ippit
kaman-ak-ak
kamannemnem

Kaman-ippit hi Anah.
Kaman-ippit hi Anah et hi inam.

Kaman-ak-ak utut di anik.
Kaman-ak-ak utut et ukken di anik.

Kamannemnem hi Kummah.
Kamannemnem hi Kummah et hi ama.

ipit
man-ippit
kaman-ippit

ak-ak
man-ak-ak
kaman-ak-ak

nemnem
mannemnem
kamannemnem

um—uta
um—epa
um—tuptup
um—pekpek

um-uta
um-epa
umtuptup
umpekpek

Um-uta hi akki:

Um-uta hi akki tep wada uk-uk tu.

Um-epa tiktik.

Um-epa epat ni tiktik.

Umtuptup hi Anah.

Umtuptup hi Anah et hi inam.

Umpekpek hi Kummah.

Umpekpek hi Kummah di ehpen.

uta
um-uta

epa
um-epa

tuptup
umtuptup

pekpek
umpekpek

me__iket
me__mukmuk

meikkel
memukmuk

Meikkel ukken.
Meikkel epat ni ukken.

Memukmuk hi apu.
Memukmuk hi apu et hi ama.

man-ippit	man-ak-ak	mannemnem	mantuptup
kaman-ippit	kaman-ak-ak	kamannemnem	kamantuptup

nantanem	um-uta	umtuptup	meikkel
um-inum	um-epa	umpekpek	memukmuk

l__a	la
l__e	le
l__i	li
l__u	lu

a__la	ala
a__li	ali
u__lu	ulu

Um-ala hi Anah ni kennen.
Um-ala hi Kummah ni ikan.

Um-ali hi inam.
Um-ali hi inam et hi apum.

ala
ali

ala
ulu

ulu
ali

ta	te	ti	tu
la	le	li	lu

la__ta	lata
la__ti	lati
le__tu	letu
lu__tu	lutu

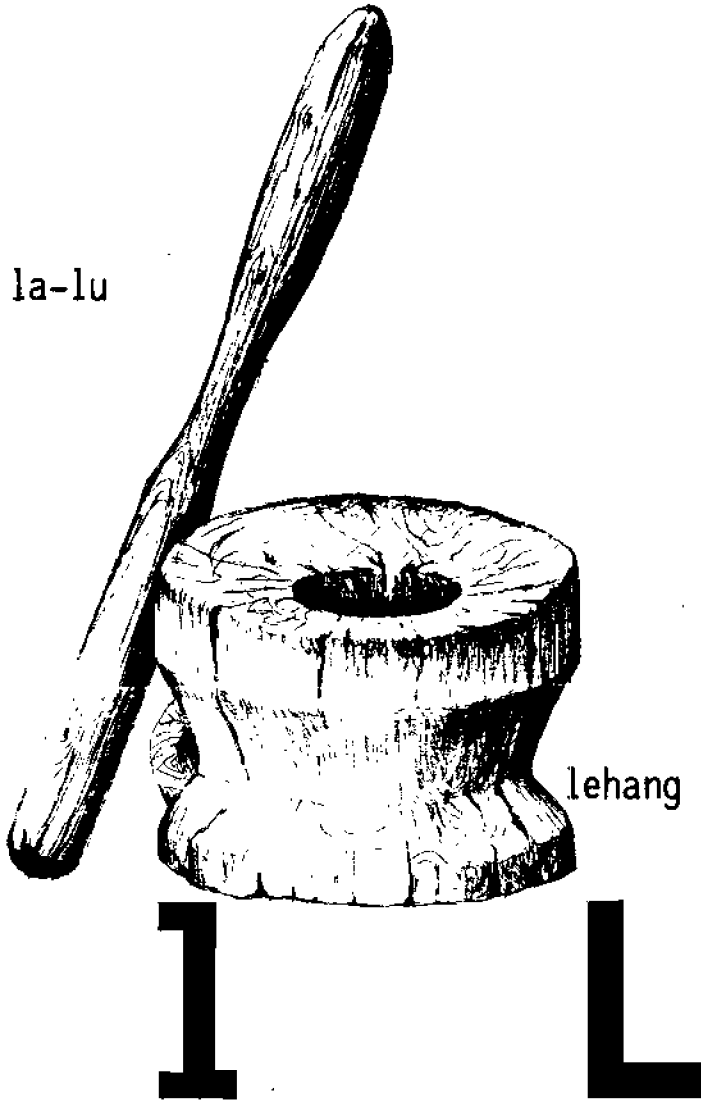
Immen ipit di lata.
 Immen patak di lata.

Wada latin lata.
 Wada latin patak.

Wada letun ama.
 Wada letun ina.

lata	letu	lata	lati
lati	lutu	ala	ali
lutu	letu	lati	
ulu	letun	latin	

la-lu



ne__lutu

nelutu



Nelutu kenen.
Nelutu emin hu kenen.

Immen nelutu ni kenen di lata.
Immen nelutu ni manuk di lata.

Um-ala hi Anah ni kenen tep nelutu.
Um-ala hi Anah ni ikan tep nelutu.

la__mut	lamut
li__mut	limut
li__pu	lipu
li__put	liput



Wada lamut di lipu.
Nan-enan lamut di lipu.

Neatu hi ama tep wada liput tu.
Um-ali hi ama nem wada liput tu.

Um-ala hi Kummah ni enem ni limut.
Um-ali hi Kummah tep um-alan enem ni limut.

lipu	lamut	lata	letu
liput	limut	lati	lutu

Immen nelutu ni manuk di lata et um-ala hi
amam.

Immen nelutu ni manuk di lata et um-ala hi
apum tep neupa.

Um-ali amam et um-ala enem ni patak.
Kan tuy, "Wada latin epat ni patak."

Wada letun amam et um-ala hi Kummah ni limut
tu.
Wada letun apum et um-ala hi ama ni limut tu.

Wada lamut di lipu.
Nan-enan lamut di lipu.

Wada liput di ulu tu.
Wada liput di ulun amam.

lap
lak
lam

lep
lek
lem

lip
lik
lim

lup
luk
lum

lap__lap
lep__lep

laplap
leplep

lek__lek
luk__luk

leklek
lukluk

lem__lem
lum__lum

lemlem
lumlum

laplap
leplep

leklek
lukluk

lemlem
lumlum

leplep
leklek

lukluk
lumlum

nan___laplap
nan___leplep

nanlaplap
nanleplep

Nanlaplap hi Anah.
Nanlaplap hi Anah et hi inam.

Nanleplep hi Kummah.
Nanleplep hi Kummah et hi amam.

laplap	leplep	nanlaplap	nanleplep
nanlaplap	nanleplep	nantaptap	nanteptep

nan___taptap nantaptap

Nantaptap ni ukken hu iket.
Nantaptap ni puha hu ikul ni utut.

al	el	il	ul
kal	kel	kil	kul
mal	mel	mil	mul

i__kul	ikul
e__kal	ekal

ta__mil	tamil
te__mel	temel

Nantaptap ni ukken hu ikul ni utut.
 Nantaptap ni puha hu ikul ni utut.

Netuktuk hi akki et ya tamil tu.
 Netuktuk hi inam et ya tamil tu.

Um-ala aman temel.
 Um-ala hi Kummah ni temel.

Ekal mu lamut.
 Ekal mu lamut di lipu.

ikul	tamil	ekal	tamil
ekal	temel	temel	ikul

ala
ulu

ali
ulu

ala
ama

ikul
ekal

tamil
temel

lata
lati

letu
lutu

emin
enem

immen
inum

tanem
nemnem

leplep
laplap

lemiem
leklek

lumlum
lukluk

mukmuk
lukluk

mekmek
leklek

makmak
mikmik

lamut
limut

taptap
laplap

teptep
leplep

lipu
liput

pekpek
leklek

pukpuk
lukluk

pakpak
makmak

tiptip
tuptup

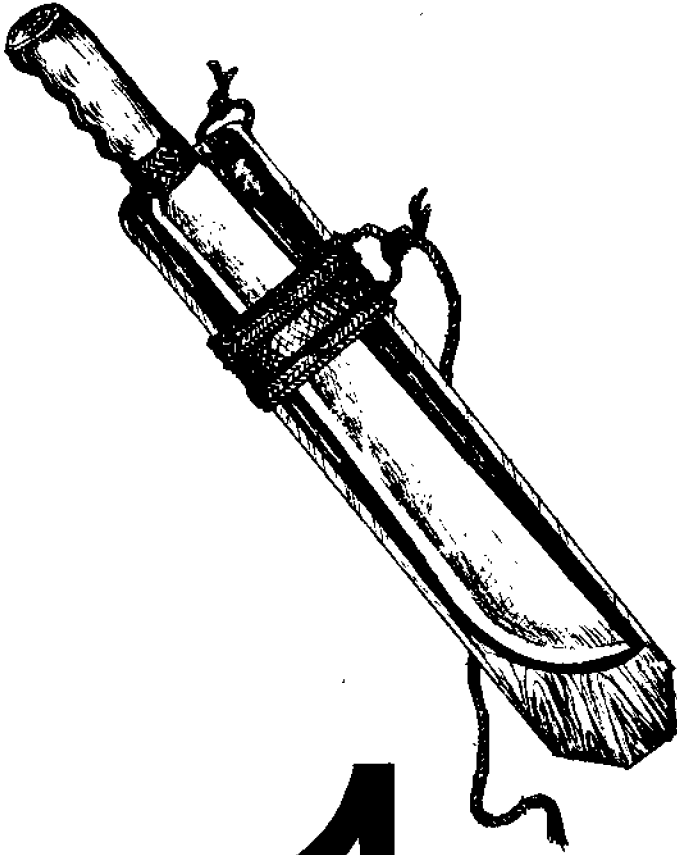
Nan-utip utut di atep. Nan-utip puha di atep. Nantaptap ni puha hu ikul ni utut et kinlat ni utut tamil ni puha.

Attuy patak? Immen di lata. Inukat amam epat ni patak. Kan tuy, "Wada latin emin ni patak."

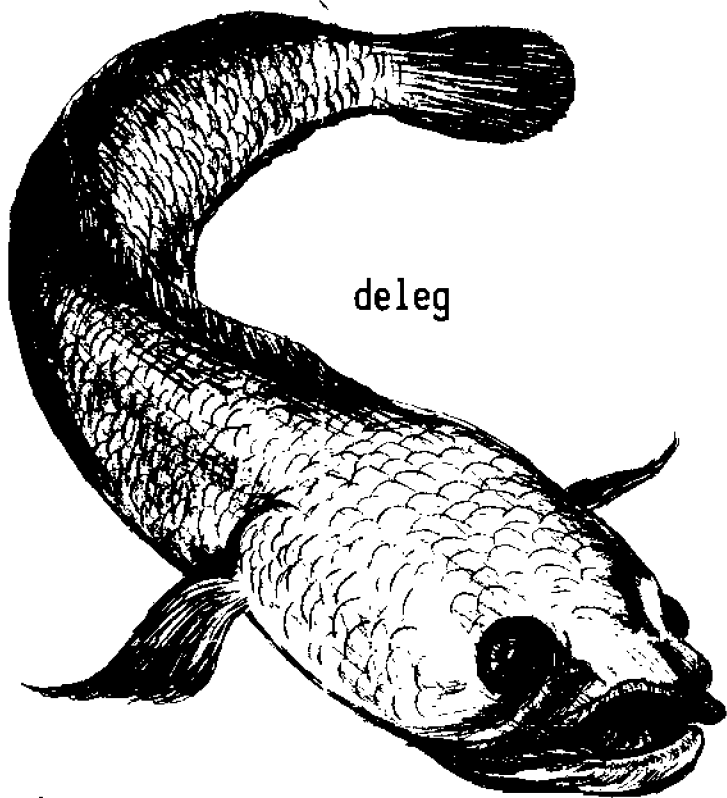
Nan-uma hi ama di lipu. Ekal mu lamut di lipu et umtanem kami.

Nantanem hi ama di lipu. Neatu et neupa. Nelutu manuk et ya kenne tu.

Netuktuk hi akki et ya tamil tu. Wada liput di tamil tu.



4



d D

d__a
d__e
d__i
d__u

da
de
di
du

la
da

le
de

li
di

lu
du

de__li
di__la
du__li

deli
dila
duli

Um-ala idan deli.
Wada enem ni deli.
Kinan da epat ni deli.

ne__duli

neduli



neduli

dila
duli

ulu
duli

ali
deli

ala
dila

da

de

di

du

da___pan

dapan

da___lan

dalan

di___man

diman

da___kel

dakel

Wada dakel temel di dalan.
Ekal mu temel di dalan.

Wada dakel temel diman.
Wada dakel lata diman.

Neduli dapan tu.
Neduli dapan tu tep wada liput.

dapan
dalan

diman
dapan

dakel
dalan

dalan
diman

dan	den	din	dun
dal	del	dil	dul
dam	dem	dim	dum

u__dan

udan

Namtanem ida tep immen ali man udan.
 Wada dakel ni danum di dalam tep wada dakel
 udan.

e__dum

edum

Wada edum ni deli.
 Wada edum ni letun diman.

a__dal

adal

nan__adal

nan-adal

Nan-adal hi inetu.
 Nan-adal hi inam et hi ama.

udan

edum

ekal

udan

adal

inum

adal

edum

Dakel udan law tep wada lelem.
Wada latin lata tep dakel udan.

Nanlaplap hi ina et um-alan edum ni lamut
diman.

Nanleplep hi ama et hi apü.

Dakel letu nem ya hu limut.
Neduli dapan nem ya hu edum.

Nantanem hi Kummah diman.
Nantanem hi Kummah ni dakel diman.

Um-inum hi Anah ni danum di dâlan.
Um-inum idan danum di dalan.

Hedin um-epa tiktik di dalan nampanan ama.
Wada dakel temel di dalan.

Nan-adal hi Anah.
Nan-adal hi Anah et hi Kummah.

kat	ket	kit	kut
kal	kel	kil	kul
kad	ked	kid	kud

ti__ked	tiked
tu__kud	tukud

Um-ala hi aman tukud diman.
Um-ala hi aman enem ni tukud di dalan.

Wada epat ni tukud.
Um-ali hi ama et um-alan tukud.

tiked	ikul	iket	tiked
tukud	ekal	ukat	tukud

lad
pad

led
ped

lid
pid

lud
pud

lad__lad
led__led

ladlad
ledled

pad__pad
ped__ped

padpad
pedped

Nanladlad hi ama.

Nanladlad hi ama et nanlelep.

Um-ala hi aman edum ni padpad.

Um-ala hi Kummah ni edum ni padpad diman.

Nampedped hi ina di lata.

Nampedped hi inan dakel di lata.

ladlad
ledled

padpad
pedped

ladlad
padpad

ledled
pedped

lata lati	letu lutu	penu pinu	ala ali
limut lamut	liput limut	lipu liput	ikul ekal
tamil temel	deli dila	duli dila	dapan daian
diman dapan	udan adal	edum inum	lumlum lukluk
teptep tiptip	tukud tiked	tanem nemnem	immen emin
laplap ladlad	leplep ledled	lemlem leklek	laplap taptap
pakpak padpad	pekpek pedped	pikpik mikmik	lukluk mukmuk
taktak pakpak	tektek leklek	tiktik mikmik	tuktuk pukpuk

"Um-ali kami. Nantanem kami diman et um-ala kami dakel ni lamut tep lemlem. Ekal mu tukud diman tep neatu kami. Attu hi Anah et hi Kummah?"

"Nan-uma hi Anah et nanleplep hi Kummah. Nan-enan lamut di lipu."

"Kaw um-ala hi Kummah ni limut?"

"Ag um-ala hi Kummah ni limut tep dakel udan et wada liput tu."

"Attu liput tu?"

"Netuktuk ey wada liput ni tamil tu et wada dulin dapan tu. Neatu hi Anah et wada liput di ulu tu."

"Attu inan akki?"

"Netaktak di dalan."

"Nan-uk-uk hi akki et umutan dakel."

"Kaman-ak-ak hi apu di ani et um-epa tiktik diman. Nampanan apu tiktik ey nan-utip ukken et kinan tu."

"Wada edum kennen mi."

"Nempedped inan kennen di lata ey nelutu et ya deli. Um-ala inan kennen di lata."

"Kaw wada patak?"

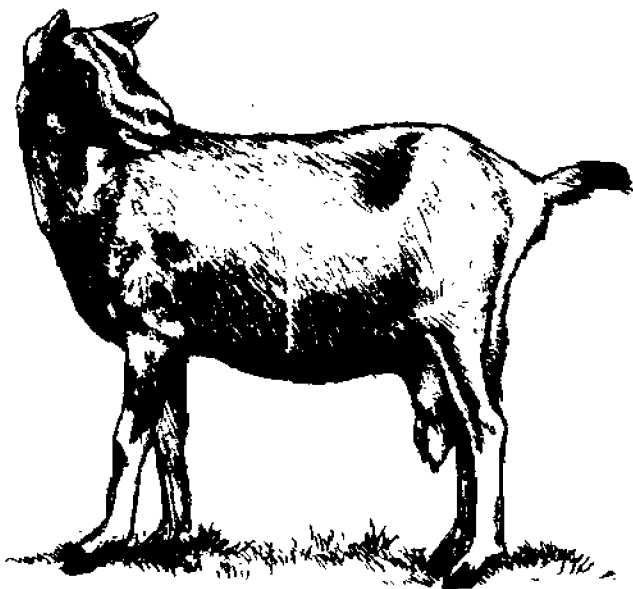
"Em. Wada dakel di lata. Inukat nan hi Kummah hu enem. Um-ala hi Kummah ni edum ni tukud."

"Kele nanlaplap hi ina? Dakel edum kennen mi."

"Nanlaplap hi ina tep nantaptap utut dakel."

"Attuy puha mi?"

"Immen. Nan-utip puha di atep et nantaptap tu ikul ni utut nem kinlat ni utut."



gelding

g G

g__a	ga
g__e	ge
g__i	gi
g__u	gu

a__gi	agi
e__ga	ega

a__gah	agah
e__geh	egeh

Um-ali hi agin Anah et umtanem diman.
 Um-ala hi agin Anah ni lamut diman tep
 nantanem ida.

Kaw wada agah ni ulu tu?
 Em. Wada agah ni ulu tu.

Kaw wada agah ni egeh tu?
 Em. Wada agah ni egeh tu.

agi	agah	agi	ega
ega	egeh	agah	egeh

a
ga

e
ge

i
gi

u
gu

ga—get
gi—git

gaget
gigit

ge—lid
gu—lid

gelid
gulid

Kaw wada gigit diman?
Wada latin gigit tep dakel udan.

Gelid mu tukud.
Gelid mu gigit.

Kaw wada agah ni gulid?
Kaw wada agah ni gulid ni ulu?

gaget
gigit

gelid
gulid

gaget
gelid

gigit
gulid

Um-ali ida nem ag ida um-alan limut.
Um-ali kami nem ag kami um-alan limut.

Kaw wada agah ni dulin dapan?
Kaw wada agah ni ulun agin ama?

Kele maggeh dapan agin ama?
Kele maggeh ulun agin ama?

Wada liput di tamil akki et dakel gulid tu.
Kaw wada agah ni liput et gulid?

Wada dakel gigit ama.
Wada dakel latin gigit ama.

ega
agi

egeh
agah

gaget
gigit

gelid
gulid

lag

leg

lig

lug

e__leg

eleg

de__leg

deleg

di__lag

dilag

gi__lig

gilig

Kinan da deleg.

Um-ala dan edum ni deleg.

Kaw wada dilag diman?

Eleg. Um-ala kamin dilag.

Attu gilig tu?

Wada gilig tu diman.

eleg
deleg

dilag
gilig

eleg
dilag

deleg
gilig

lag
pag
mag

leg
peg
meg

lig
pig
mig

lug
pug
mug

lag__lag
pag__pag

laglag
pagpag

leg__leg
meg__meg

legleg
megmeg

Wada megmeg di lata.
Um-ala kamin megmeg.

Nanlegleg hi ina.
Nanlegleg hi agi.

laglag
pagpag

legleg
megmeg

laglag
legleg

pagpag
megmeg

laput
liput

ikul
ekal

tamil
temel

duli
dila

deli
dila

udan
adal

tiked
tukud

agi
ega

agah
egeh

gaget
gigit

gulid
gelid

maggeh
na-guh

eleg
deleg

dilag
gilig

danum
edum

lumlum
lukluk

megmeg
pedped

legleg
ledled

laglag
ladlad

pagpag
padpad

megmeg
mekmek

legleg
leklek

ledled
leplep

pedped
pekpek

laglag
laplap

ladlad
laplap

pagpag
pakpak

padpad
pedped

Wada agah ni ulu tu et egeh tu.

Wada latin gigit tep dakel udan et wada lemlem.

Wada gilig tu diman.

Gelid mu gigit.

Nan-adal hi Anah et hi Kummah.

Dakel gulid di ulu tu nem ya hu dapan tu.

Um-ali hi agin Anah et umtanem diman.

Um-ala dan epat ni deleg.

Hedin um-epa tiktik di dalam nampanan ama.

Hedin um-ali kami ag kami um-alan limut.

Nampedped hi inan megmeg.

Nanlegleg hi agi.

Nanladlad hi ama et nanleplep.

an

en

in

un

in—ipu

in-ipu

in—uta

in-uta

in—ali

in-ali

in—ala

inla

In-ipu tu agah di gulid tu.

In-ipu tu agah di gulid nan hi agi tu.

In-utan Anah kinan tu tep wada uk-uk tu.

In-utan Kummah agah tep wada dakel ni uk-uk tu.

In-ali tu kenne tu.

In-ali tu ukken tu.

Inla da deleg.

Inla da enem ni deleg.

ipu

ali

uta

ala

in-ipu

in-ali

in-uta

inla

an

en

in

un

in__tiked	intiked
in__leklek	inleklek
in__tuktuk	intuktuk

Intiked tu uma tep an-um-alan tukud.
Intiked da ani tep ida um-alan limut.

Inleklek tu matetu.
Inleklek agi tu matetu.

Intuktuk tu ulu tu ey maggeh.
Intuktuk tu ulu tu ey dakel maggeh.

leklek	tuktuk	tiked
inleklek	intuktuk	intiked

ta	tu	ad	ud
da	du	an	un
		al	ul

tu__u	tuu
pa__ul	paul
da__un	daun
ha__ad	haad

Nantanem tuu tep immen ali man lemlem.
 Nantanem tuun dakel tep immen ali man udan.

Inlan tuu daun ey inhaad da kennen da.
 Inlan Anah daun ey inhaad tu deleg tu.

Um-ala hi Anah et hi agitun paul.
 Um-ala tuun paul.

Intiked da tanem tep ida um-alan paul.
 Intiked tu ani tep an-um-alan paul.

tuu	tuun	paul
tuun	daun	haad

in-ipu	in-ali	intuktuk	intuktuk
in-uta	inla	inleklek	intiked
tuun	paul	eket	init
daun	haad	iket	ipit

"Um-ali akkin Anah tep wada gulid tu. Dakel gulid di ulu tu nem ya hu dapan tu. In-ipun Anah agah di gulid tu nem ag me-kal. Kaw wada edum ni agah?"

"Inlan agi paul ey wada ekut di matetu. Inleklek tu matetu nem ag me-kal. Hedin inhaad mu agah di matetu kaw me-kal?"

"Intiked ni tuu ani ey inla da daun tep immen ali man udan. Um-ali hi ina et hi ama. Kaw wada paul diman? Attu inhaad mun ipit ina?"

"In-alin Kummah akki tu tep intuktuk akki ulu tu et wada liput diman. In-utan akki kinan tu tep wada uk-uk tu dama."

an

en

in

un

taktak__en

taktaken

nemnem__en

nemnemen

letu____en

leltuén

ekal____en

e-kalén

Taktaken tu detag mi et ihhaad tud daun.
Taktaken ama eket ni detag mi et ihhaad
tud daun.

Nemnemen ku et um-ali ak.
Nemnemen ku et um-ala ak.

Leltuén da limut da.
Leltuén dan emin.

E-kalén mi emin lamut di dalan.
E-kalén ku gigit di gilig tu.

taktak

nemnem

letu

ekal

taktaken

nemnemen

leltuén

e-kalén

na	ne	ni	nu
pa	pe	pi	pu
la	le	li	lu
ta	te	ti	tu

na-___mu	na-mu
pa-___tu	pa-tu
la-___lu	la-lu
tu-___li	tu-li

Intuktuk tu ulu tud la-lu.

Intuktuk tu ulu tud la-lu et maggeh.

Intiked tu uma tep an-um-alan paul na-mu.

Intiked tuu tanem tep ida um-alan limut na-mu.

Pa-tuen tu agi tu tep ag um-alan paul.

Pa-tuen tu agi tu tep inla tu ipit tu.

Tu-lien tu tukud et e-kalen mi.

Tu-lien tu emin tukud et ihhaad mi edum.

na-mu	la-lu	tu-li	na-mu
pa-tu	pa-tu	la-lu	tu-li

an

en

in

un

ukih__an

ukkihan

agah__an

eggahan

gaget__an

geggetan

Ukkihan tu lamut.

Ukkihan tu emin lamut diman.

Eggahan ku matetu.

Eggahan ku gulid di dapan tu.

Geggetan ku ani.

Geggetan ku et um-ala ak ni paul.

ukih

ukkihan

agah

eggahan

gaget

geggetan

pat
nat

mel
del

nad
mad

pak
dak

ka-___pat
pu-___nad

ka-pat
pu-nad

ta-___mel
tu-___dak

ta-mel
tu-dak

Um-ali tuun ka-pat et geggetan ni tanem.
Hedin um-ali tuun ka-pat eggahan ku et me-kal
degeh da.

Pu-nadan ku danum di lata tep umlati.
Pu-nadan ku danum di patak tep umlati ida.

Inhaad tu agah di danum ey inta-mel tu dapan
tu.
Inta-mel tu dapan tu tep wada gulid tu.

Intu-dak ku Kummah et taktaken tu detag.
Intu-dak ku ama et tu-lien tu tukud.

ka-pat
pu-nad

ta-mel
tu-dak

na-mu
pa-tu

la-lu
tu-li

ta-mel
inta-mel

pu-nad
pu-nadan

tu-dak
intu-dak

pa-tu
pa-tuen

in-ipu
in-uta

in-ali
inla

intiked
intu-dak

inleklek
intuktuk

tuun
daun

paul
haad

eket
iket

init
ipit

taktaken
nemnemen

leltuen
e-kalen

na-mu
pa-tu

la-lu
tu-li

ukkihan
eggahan

geggetan
eggahan

ka-pat
pu-nad

ta-mel
tu-dak

pa-tuen
tu-lien

pu-nadan
matetu

me-kal
an-um-alan

inta-mel
intu-dak

haad
inhaad

pu-nad
pu-nadan

ta-mel
inta-mel

tu-dak
intu-dak

In-ali tu agah ni gulid. Inta-mel tu dapan tu ey in-ipu tu agah. Kan tuy, "Hedin ihhaad ku agah di dapan ku me-kal gulid.

Intiked akki utan kinan tu tep inlan ina agah ni degeh ni egeh tu ey eggahan tu akki.

Nantanem hi agi di ehpen. Inleklek tu matetu et ag me-kal teay intiked tu tanem. Ihhaad ku agah di matetu ey e-kalen tu na-mu.

Intu-dak ku Kummah et taktaken tu detag. Geggetan tu tep tu-lien tu emin tukud et ihhaad tu edum ni ka-pat.

GLOSSARY

Antipolo Ifugao	Pilipino	English
akki	batang babae	baby girl
ak-ak	isulot	to pass through
agah	gamót	medicine
agi	kapatid	sibling
ala	makuha	to obtain
ali	lumapit	to come: approach
ama	ama	father
Anah		name of girl
ani	ani	harvest
apu	nunong	grandparent
atep	bubóng	roof
atip	kaluban	bolo sheath
attu	saán	where
atu	pagód	to be tired
kan		said
ka-pat	Huwebes	Thursday; 4th day
kaw		question marker
kena	tibóng	to trap
kennen	pagkain	food
kinan	kanin	ate
kinlat	kagat	bit
ku	ko	non-topic "I"
kuku	kukó	finger nail
kunu	sinabi	it is said
dalan	daan, lakad	path; to walk
dapan	paa	foot
daun	dahon	banana leaf
deleg	isdà	generic name of fish
deli	duhól; palós	eel
di		particle marking loca- tion
dila	dilà	tongue
dilag	liwanag	light; illumination
diman	diyán	that place
duli	paglaki	swelling of leg or foot

ekal	alis	to remove
ekan	kan	to eat
eket	maliit	small
ekut	ilán	few
edum	ibá	other; some
ega	mapagmataás	to be proud
egeh	tiyan	abdomen
ehpen	babá	down below
eleg	hindi	no
emin	lahát	all
enak	aná	another's offspring
enan	tirhan	to occupy space
enem	anim	six
epa	bumabá	to alight
epat	apat	four
et	at	and
ey		and
gaget	matulin	to be quick
gelid	gumaláw	to move something
gigit	kawad	wire
gilig	gilid	edge
gulid	langib	sore; scab
haad	lunán	to place
hi		particle marking person as topic
hu		particle marking topic
ikan		a kind of fish
iket	tali	a tie; to tie
ikul	buntót	tail
ida	silá	they
immen	iyon	It's there.
ina	ina	mother
inum	inom	drink
ipit	pang-ipit	clip; trap
ipu	kuskus	to rub
ita	kitá	we two
itit	langitngit	squeak of rat

ladlad	simutín	to strip outside of cane
laglag		dead tree - no leaves
la-lu	halo	rice-pounding stick
lamut	ugát	root
laplap		to cut camote in small pièces and boil
lata	lata	can
lati	kalawang	to rust
ledled	lalong	to get worse
	masama	
leklek		to rub eye because something foreign has entered
legleg	gugò	to wash hair
lemlem	tag-ulán	rainy season
leplep		to cut cain in small pièces
letu	ari-arian	something earned; pro- perty
limut	ambág	contribution
lipu		old camote patch
liput	sugat	wound
lukluk		to hide face
lumlum		to go into mudhole
lutu	lutò	ripe; cooked
makmak		noisy sound of pig eating
maggeh	masakit	painful
manuk	manok	chicken
matek	lintà	leech
matetu		his eyes
megmeg		small broken pièces of rice for chicken feed
mukmuk	panót	bald
nan		particle marking non- topic person
na-mu	marahil	maybe
nemnem	isip	mind; think

pakpak	dikit	to paste
padpad	baitang	cross bar of ladder
pana	panà	bow and arrow
paul	patpát	dry cane stick
pa-tu	palu	to hit with something
pekpek	tapon	to throw with force
pedped	pilit	to press down
penu	punu	to fill
pikpik		baby chicken
pinu	pino	fine
pitu	pitu	seven
pukpuk	kuskus	to brush something off
pu-nad	punas	to wipe
taktak	antaca	to be delayed
tamil	pisngi	cheek
tanem	tanim	to plant
taptap		to chew noisily
ta-mel	ibabad	to soak
teay		clause-level ligature
tektek	tilarin	to split wood with bolo
temel	damo	short grass
tep	pagkat	clause level ligature
teptep		to be hit by something
		heavy
tiked	tigil	to stop something
tiktik		kind of large bird
tiptip	higop	to sip a drink
tuktuk	noó	forehead; to bump
tukud	haligi	housepost
tuptup	tagpi	to mend
tuu	tao	people
tu-li	tumbá	to collapse
ukat	lipat	to remove something from
		under cover
ukken	tutá	puppy
uk-uk	umubó	cough
udan	ulán	rain
ulu	ulo	head
uma		to clear for camote plan-
		ting
uta	sumuka	to vomit

utip
utut
ya
wada

bayna
laga

wala

bolo sheath
rat
particle
there is