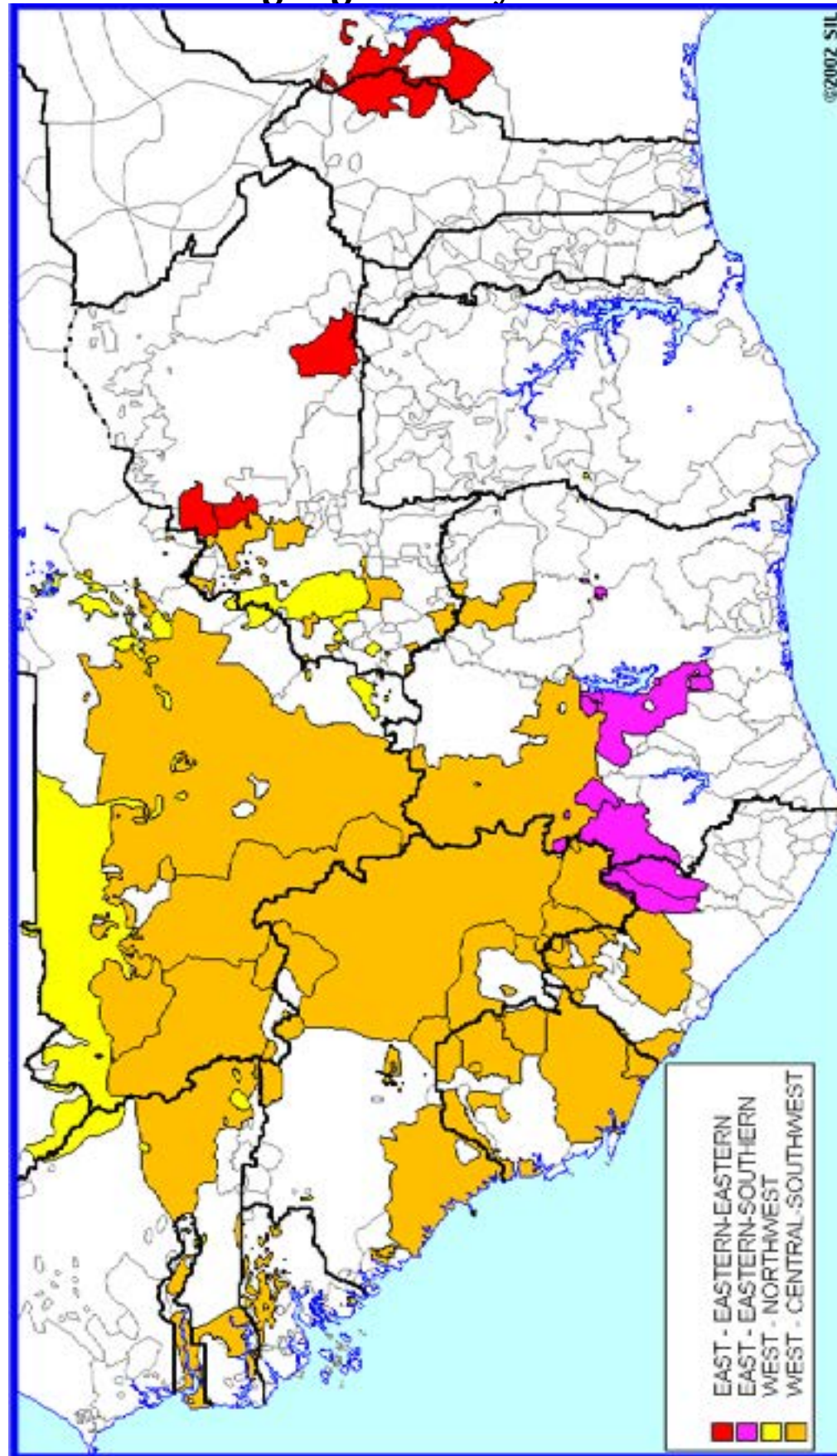




Mandé Language Family of West Africa: Location and Genetic Classification

Valentin Vydrin and T. G. Bergman
Cartographer: Matthew Benjamin

Mandé Language Family of West Africa:



Location and Genetic Classification

Valentin Vydrin and T. G. Bergman
Cartographer: Matthew Benjamin

There are considerable amounts of data and studies available in the literature concerning the Mandé languages. The purpose of this presentation is to give a detailed set of maps showing the location of the home territory where each variety is spoken and the linguistic relationship of one to the other, according to the present state of our knowledge.

Any work of this nature is necessarily built on the work of many others, both the language location information and the linguistic classification. This is really more an edited summary than original material.¹

The map on the following page spread shows the extent of the Mandé languages in West Africa

Index to Mande languages

See a language or section in more detail beginning on page 12 of this report.

NOTE: Only the following sections are now posted:

- West, Central-Southwestern, Central, Manding-Jogo, Jogo-Jeri, Jogo, [Jogo \(Ligbi\)](#)
- West, Central-Southwestern, Central, Manding-Jogo, Jogo-Jeri, Jeri-Jalkuna, [Jeli and Jalkuna \(Ble\)](#)
- West, Central-Southwestern, Central, Manding-Jogo, Manding-Vai, [Vai-Kono](#)
- West, Central-Southwestern, Central, Manding-Jogo, Manding-Vai, Manding-Mokole, [Manding](#)
- West, Central-Southwestern, Central, Manding-Jogo, Manding-Vai, Manding-Mokole, Mokole, [Kakabe](#)
- West, Central-Southwestern, Central, Manding-Jogo, Manding-Vai, Manding-Mokole, Mokole, [Mogofin](#)
- West, Central-Southwestern, Central, Manding-Jogo, Manding-Vai, Manding-Mokole, Mokole, [Koranko and Lele](#)
- West, Central-Southwestern, Central, Susu-Yalunka, [Soso](#)
- West, Central-Southwestern, Central, Susu-Yalunka, [Yalunka and Jallonke](#)
- West, Central-Southwestern, Southwestern, [Kpelle and Mende-Looma](#)
- West, Central-Southwestern, Southwestern, Mende-Looma, Mende-Bandi, [Mende](#)
- West, Central-Southwestern, Southwestern, Mende-Looma, Mende-Bandi, [Loko](#)
- West, Northwest, Soninke-Dzuun, [Samogo \(Dzuun-Seenku\)](#)
- West, Northwest, Soninke-Dzuun, Soninke-Bobo, [Bobo](#)
- West, Northwest, Soninke-Dzuun, Soninke-Bobo, Soninke-Bozo, [Soninke](#)

¹ Valentin Vydrin is the head of African Department at the Museum of Anthropology and Ethnography, Russian Academy of Sciences (St. Petersburg). Ted Bergman was the International Coordinator for language survey work of SIL International at the time of his involvement with this project. He is currently the General Editor of the SIL Electronic Survey Reports. Matthew Benjamin is a computer cartographer with SIL International. He is responsible for the maps appearing in this work.

West, Northwest, Soninke-Dzuun, Soninke-Bobo, Soninke-Bozo, [Bozo](#)
 East, Eastern-Eastern, [Bisa and San](#)
 East, Eastern-Eastern, [Busa](#)
 East, [Eastern-Southern](#)

Genetic Relations

Study of the linguistic relationships in the Mandé family has a long history. See David Dwyer (1989) and Raimund Kastenholz (1991/92, 1997) for an overview. The classification presented here is based on the work of Valentin Vydrin (2009).

The Internet is an ideal medium for our purpose. We are not dealing with settled and undisputed facts but instead we are presenting what we think is the best available information on the topic, as much to request correction of our understanding as to provide data for others to use. The nature of electronic publishing is such that it is possible to easily update the presentation as further information becomes known. In answer to the frustration of one of our cartographers when the “facts” seem to keep changing and maps are repeatedly redone, it was explained that the process is more important, in many ways, than the product. It is often the process of publishing what we know that elicits improvement in our knowledge. People are able to offer corrections when they see what we are thinking. For further information on Mande languages, see http://mandelang.kunstkamera.ru/index/mande_languages/mande_family/

The Maps

The mapping data come from many sources. Changes that are made from previous maps will become fewer over time as the state of knowledge increases. Boundaries between speech varieties can change if the people move or abandon their language for another one, though large changes don't usually happen very rapidly. New dividing lines between speech forms may be required when scholars change their ideas about relationships. The locations of other features on the maps are less likely to change. However, geographic features such as rivers, lakes, and mountains may be repositioned on the map if improved data is received. Occasionally the location of villages and the alignment of international boundaries are altered, and such changes will be reflected in the maps when they are officially recognized.

These particular maps are built from a database that, among other things, was used to produce the maps shown in the fourteenth edition of the *Ethnologue* (Grimes:2000). The database is constantly being revised. In deciding which speech forms constitute separate languages, the emphasis is more sociolinguistic in nature than purely linguistic, though of course in most cases the two converge. By sociolinguistic, we mean that in addition to linguistic factors such as intelligibility, ethnic identity and attitudes toward other speakers are all considered in defining the distinction between language and dialect.

The computer database is the work of Irene Tucker, Bernard Wafukho and Matthew Benjamin. The data for the maps comes from numerous sources including Global Mapping International, French 1:200,000 map sheets, English 1:250,000 map sheets. Some geographic data is from Global Ministry Mapping System 1997. The starting point for language locations is based on the Global Ministry Mapping System 1997, but extensive revisions have been made to that in the process of preparing this work. The representation of international and language boundaries is not necessarily

authoritative. No political statement is intended by any language or international boundaries placed on any map. Permission to reproduce these maps in any print, electronic, or other medium must be obtained in writing from SIL International.

One of the authors, Vydrin, has also personally gathered mapping information on site from linguists, missionaries, officials and in particular, from speakers themselves. His findings are also incorporated into the maps as shown.

The digital cartography and internet presentation for these particular maps of the Mandé family were created from the database by Matthew Benjamin. Atlas GIS™ was the computer program employed.

Bibliography

Brasseur, G. and Savonnet, G. 1960. Cartes ethno-demographiques de l'Afrique Occidentale. Dakar: IFAN. Feuille 2: 1960.

Dwyer, David. 1989. Mandé. In *The Niger-Congo Languages*. John Bendor-Samuel, ed. Lanham: University Press of America.

Galtier, Gérard. 1980. Problèmes dialectologiques et phonographématiques des parlers mandingues. Thèse de Doctorat 3ème Cycle, Université Paris VII. Paris.

Grégoire, Claire, and Bernard de Halleux. 1994. Etude lexicostatistique de quarante-trois langues et dialectes mandé. *Africana Linguistica* XI, *Annales du Musée Royal de l'Afrique Centrale, Sciences Humaines*, vol. 142. Tervuren, pp. 53–71.

Grimes, Barbara F., ed. 2000. [Ethnologue](#): Volume 1 - Languages of the world, Volume 2 - Maps and Indexes, 14th edition. Dallas: SIL International.

Habitants du Département de Kédougou, Sénégal (les). Edité par le Centre de Recherches Anthropologiques du Musée de l'Homme. Paris, 1985.

Instituto Nacional de Estatística. Censo da população de 1950. Provincia da Guiné. Volume II : população não civilizada. Lisboa: Tipografia Portuguesa, LDA

Kastenholz, Raimund. 1991/92. Comparative Mandé Studies: State of art. *Sprache und Geschichte in Afrika* 12/13, pp. 107–158.

Kastenholz, Raimund. 1996. *Sprachgeschichte im West-Mandé. Methoden und Rekonstruktionen*. Köln:Rödiger Köppe Verlag, 281 S.

McCulloch, M. 1950. Peoples of Sierra Leone protectorate. In *Ethnographic Survey of Africa*. D. Forde, (ed.). Western Africa, Part II. London: International African Institute.

Vydrin, Valentin. 1999. *Manding-English Dictionary (Maninka, Bamana)*. Vol. 1. St. Petersburg: Dimitry Bulanin Publishing House, 315 p.

Vydrin, Valentin. 2009. On the problem of the Proto-Mande homeland. Вопросы языкового родства -Journal of Language Relationship 1, 2009, pp. 107-142.

Main sources of data for Mande language maps

Beng: Wolfgang Paesler. Esquisse phonologique du Beng, parler de Ouassadouougou (sous-préfecture de M’Bahiakro) (Côte-d’Ivoire). In: Inge Egner, éd. Esquisses phonologiques de trois langues ivoiriennes: beng, dida, yaouré. Esquisses linguistiques ivoiriennes. Abidjan: Institut de Linguistique Appliquée. ACCT, 1992, pp. 1–47.

Denis Paperno's field data.

Bisa: Bettie Vanhoudt. Lexique bisa-français, suivi d’un index français-bisa. Mandenkan, 34, 1999, 113 pp.

Vossen, Rainer & Schreiber, Henning. Approche de la situation dialectologique du bisa (mandé oriental) : la phonologie // Robert Nicolai et al. (eds.). Leçons d'Afrique : Filiations, ruptures et reconstruction des langues. Un hommage à Gabriel Manessy. Louvain-Paris : PETERS, 2001, pp. 221-238.

Bobo: The map reproduces, in major lines, the map from the following book: Le Moal, Guy. Les Bobo: Nature et fonction des masques. Paris: ORSTROM, 1980.

Also taken into account:
Sanou J.-F. 1993 – Dafrassi Jean-François Sanou. Le bobo dans l'environnement linguistique bukinabé. // Vorträge Internationales Symposium – Berichte des Sonderforschungsbereichs 268. Frankfurt am Main, 16.12. – 19.12.1992, SS. 133-153.

Boko, Busa, Bokobaru: Ross M. Jones. The Boko/Busa language cluster. LINCOM Studies in African Linguistics 30. München: LINCOM Europa, 1998, 353 pp.

Bozo (Xainyaxo, Tieyaxo, Tiema Cewe, Sorogama): Smeltzer, Brad & Smeltzer, Susan. Comptendu des enquêtes cartographique, lexicostatistique et sociolinguistique des parlers bozo. Mandenkan, 30, 1995, pp. 55-101.

Dan (Yakuba) in Côte d'Ivoire: unpublished data collected by Margrit Bolli.

Field data by Valentin Vydrin.

Dan (Gio) in Liberia: James C. Riddell, Kjell Zetterstrom, Peter G. Dorliae, Michael J. Hohl. Clan and chiefdom maps for the Mā (Mano) and Dã (Gio). Liberian Studies Journal, IV, 2, 1971-1972, pp. 157-162.

Dan (Kla), Kla-Dan: data collected by Valentin Vydrin in 2001, 2002, 2010.

Duun, Banka, Jo (Jowulu): Lee Hochstetler. Enquête linguistique sur le duungoma: une langue samogo parlée au Burkina Faso et au Mali. Mandenkan, 31, 1996, pp. 1–57.

Gban: J. Le Saout. Etude descriptive du gban. Paris: LACITO, 1976.

Data received from Taki Robert and Olive Howard.

Guro and neighboring peoples: Ariane Deluz. Organisation sociale et tradition orale: Les Guro de Côte-d’Ivoire. (Cahiers de l’Homme. Nouvelle série IX). Paris: Mouton & Co. École Pratique des Hautes Études, 1970, 196 pp.

Jallonke: Unpublished data received from Friederike Liupke, Greg Pruett, Denis Creissels.

Jogo in Ghana: Kropp Dakubu, Mary Esther. 1976. On the Linguistic Geography of the Area of Ancient Begho. Mitteilungen der Basler Afrika Bibliographien, Vol. 14, 63-91

Jeli/Jeri: Raimund Kastenholz. Une première note sur le jeri.kuo (langue Mande des Jeri). Repartition géographique et matériel lexical. Cahiers Ivoiriens de la Recherche Linguistique, 29, 1992, pp. 19–60.

Tröbs, Holger. Funktionale Sprachbeschreibung des Jeli (West-Mande). (Mande Languages and Linguistics; Vol. 3). Köln: Köppe, 1998, 241 pp.

Kagoro: cf. Vydrin, Valentin. 2001. Esquisse contrastive du kagoro (Manding). Köln: Rüdiger Köppe.

Field data collected by Brad Smeltzer, Susan Smeltzer, Dmitri Idiatov, and Valentin Vydrin in 1998.

Kakabe, Kuru-Maninka, Wure-Kaba Maninka: Field data collected by Valentin Vydrin in April 2001; field data collected by Alexandra Vydrina & Valentin Vydrin in January 2008, January 2009, January 2010.

Koranko: Kastenholz, 1987a - R. Kastenholz. Das Koranko. Ein Beitrag zur Erforschung der Nord-Mande-Sprachen. Dissertation. Universität zu Köln, 345 S.

Kyenga: Ross M. Jones. The Boko/Busa language cluster. LINCOM Studies in African Linguistics 30. München: LINCOM Europa, 1998, 353 pp.

Manding in Mali: Bird, Charles S. ed.1982. The Dialects of Mandekan. Bloomington: Indiana University.

D.N.A.F.L.A. 1983. Dialectes Manding du Mali. Sér. "Promotion des langues manding et Peul (MAPE)". Agence de cooperation culturelle et technique, Paris.

Galtier, Gérard. Problèmes dialectologiques et phonographématiques des parlers mandingues. Thèse de Doctorat 3ème Cycle, Université Paris VII. Paris, 1980. 449 p.

Field data by Valentin Vydrin.

Manding in Côte d'Ivoire: Derive, Marie-Jo. 1990. Etude dialectologique de l'aire manding de Côte-d'Ivoire. Paris: Peeters: Diffusion, J. Vrin.

Manding in Guinea-Bissau: Instituto Nacional de Estatistica. Censo da população de 1950. Provincia da Guiné. Volume II : população não civilizada. Lisboa: Tipografia Portugues, LDA

Manding in Guinea and Senegal: Unpublished data received from Tim Geysbeek on the location of Manding variants in South Guinea.

Mano in Guinea: James C. Riddell, Kjell Zetterstrom, Peter G. Dorliae, Michael J. Hohl. Clan and chiefdom maps for the Mā (Mano) and Dã (Gio). Liberian Studies Journal, IV, 2, 1971–1972, pp. 157–162.

Mano in Liberia: James C. Riddell, Kjell Zetterstrom, Peter G. Dorliae, Michael J. Hohl. Clan and chiefdom maps for the Mā (Mano) and Dã (Gio). Liberian Studies Journal, IV, 2, 1971–1972, pp. 157–162.

Marka-Dafing in Burkina Faso: Harrison, Byron and Annette Harrison. 2002. [Sociolinguistic Survey Report for the Marka-Dafin Language](#).

Marka-Jalan (San area in Mali): Kalilou Tera (Institut de Linguistique Appliquée, Abidjan), oral communication.

Mogofin: Sketch map presented by Jacqueline Janse.

Mwan in Côte d'Ivoire: unpublished data collected by Margrit Bolli.

San and Sane: Suzy Platiel. Description du parler Samo de Toma, phonologie-syntaxe. Thèse de Doctorat d’État. Paris: Université René Descartes, 1974.

Seenku: data from Tassere Sawadogo (Burkina Faso); Julie Strand's personal communication.

Shanga: Ross M. Jones. The Boko/Busa language cluster. LINCOM Studies in African Linguistics 30. München: LINCOM Europa, 1998, 353 pp.

Soninke: Field data collected by Brad Smeltzer, Susan Smeltzer, Dmitri Idiatov, and Valentin Vydrin in 1998; personal data of Brad Smeltzer and Susan Smeltzer (Mali).

Williams, Gordon, and Demba Traoré. Field report on Soninke in Senegal. 1990.

Soumaré, Mamadou. Le Sooninke en Mauritanie: Etude dialectologique. Institut des Langues Nationales, R.I.M., 1985.

Data received from Peter Jorgensen.

Tura: Thomas Bearth. L’énoncé toura. 1971. Unpublished data collected by Thomas Bearth under the auspices of SIL.

Field data collected by Dmitri Idiatov and Valentin Vydrin.

Wan: unpublished data collected by Margrit Bolli.

Yowre (Yaure): Frank Lautenschlager. Esquisse phonologique du Yaouré, parler de Zégata (sous-préfecture de Bouaflé) (Côte-d’Ivoire). In: Inge Egner, éd. Esquisses phonologiques de trois langues ivoiriennes: beng, dida, yaouré. Esquisses linguistiques ivoiriennes. Abidjan: Institut de Linguistique Appliquée. ACCT, 1992, 41 p.

Gadou, Henri. Quelques aspects des processus phonologiques, morphologiques et énonciatifs de la langue yaouré. Tomes I, II. Université Paris VII, 1995, 658 pp.

Any comments on this paper should be directed to Ted Bergman
Comments or questions on the maps should be directed to Valentin Vydrin

Date created: Apr-2001
Content last modified: 23-June-2010
Date format updated: 14-August-2019
URL: <http://www.sil.org/silesr/2000/silesr2000-03.htm>
Questions/Comments: SILES@sil.org

[[SILES Home](#) | [SIL Home](#)]

Copyright © 2010 SIL International

MANDÉ LANGUAGE FAMILY
WEST, CENTRAL/SOUTH-WEST, CENTRAL, JOGO

Genetic Relations	Language Name
West	
Central/South-West	
Central	Jogo

[Back to List](#)

GEOGRAPHIC LEGEND

- Mande language areas

Mande dialect boundaries

Non-Mande language areas

Rivers

Railroads

Major roads

Minor roads

Lakes

International borders
- Province borders

Airports

Mountains

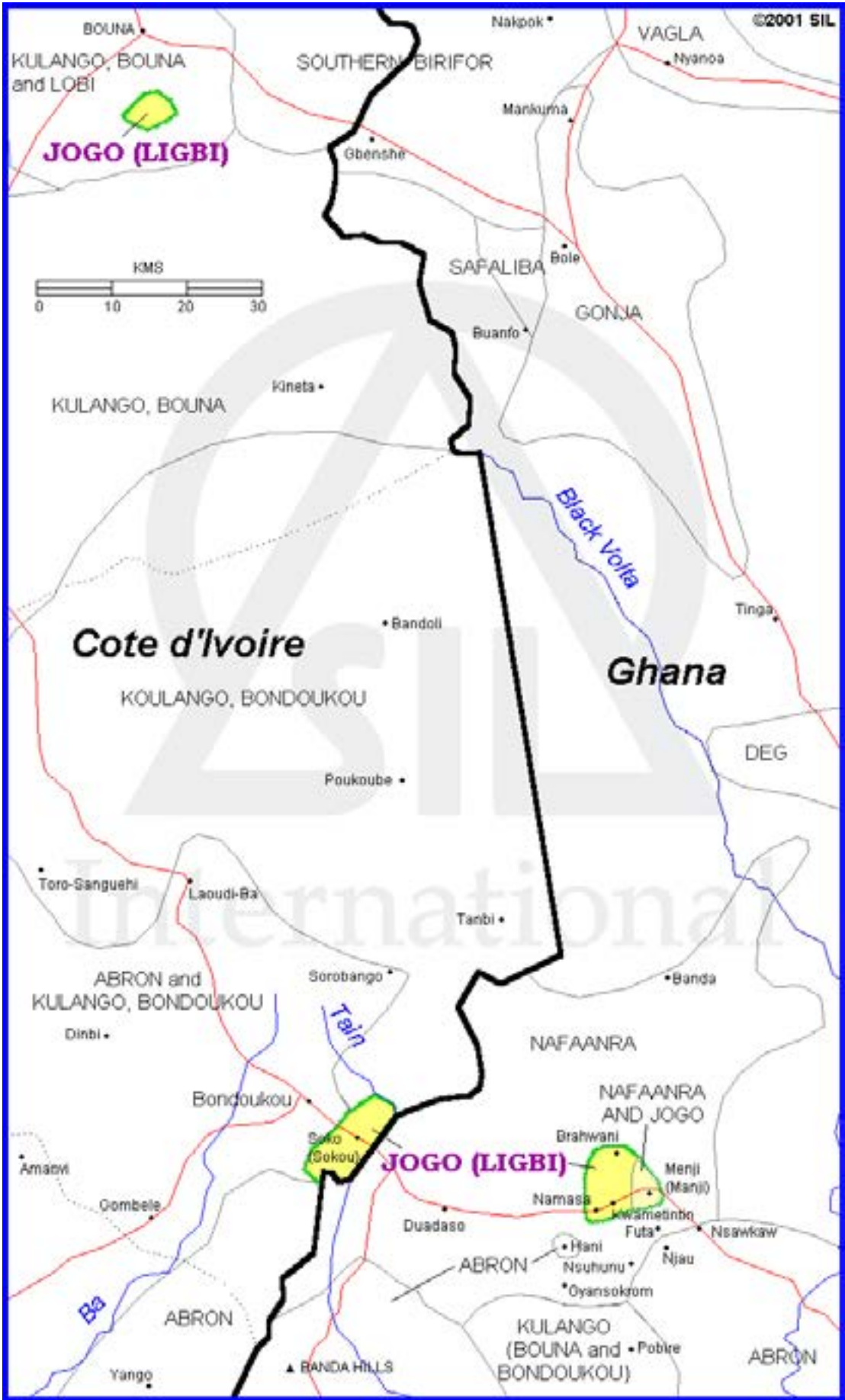
Populated places or villages

Built up areas

Medium metroplexes or cities

Large metroplexes or cities

Capitals



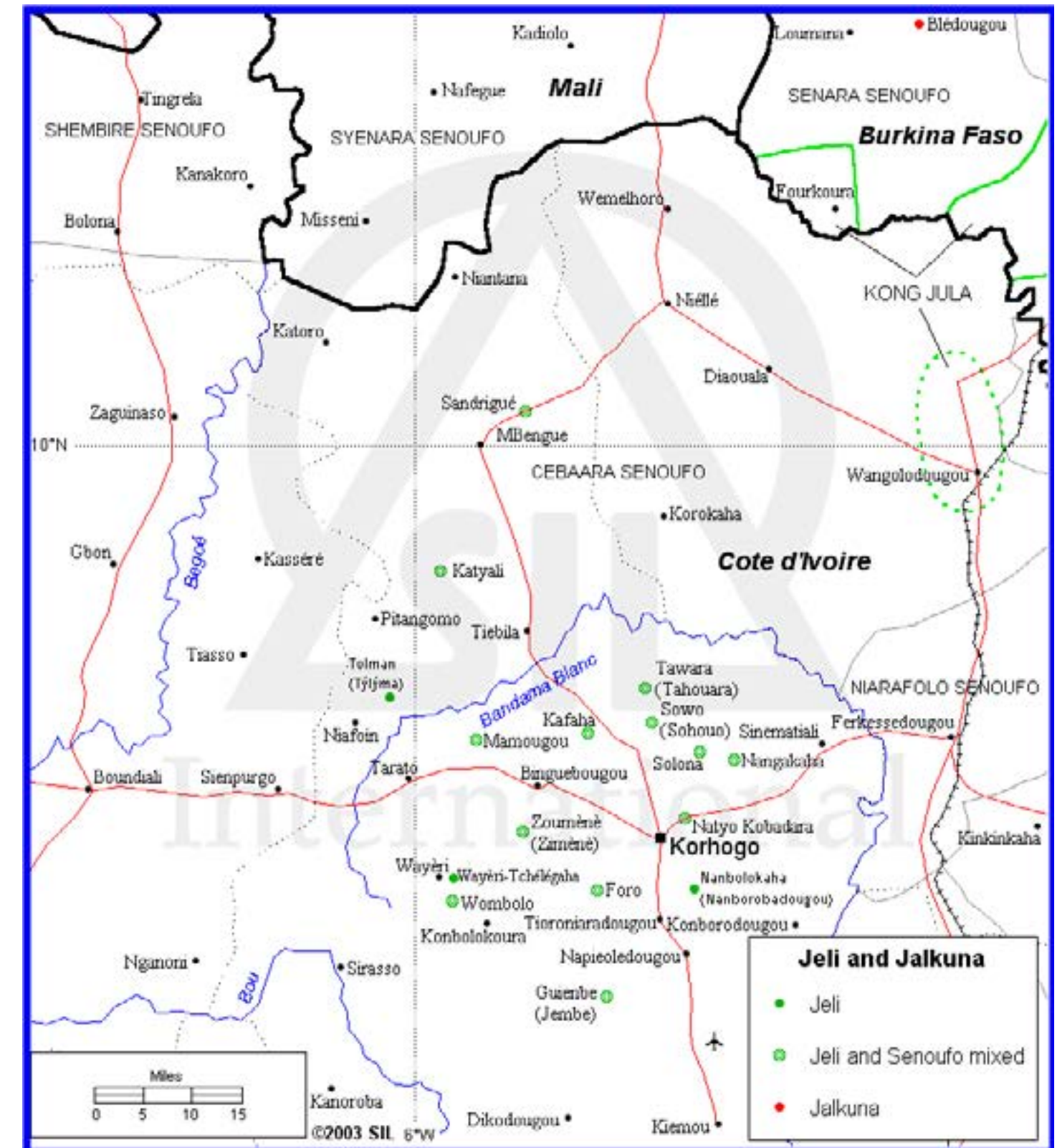
MANDÉ LANGUAGE FAMILY
WEST, CENTRAL-SOUTHWESTERN, CENTRAL,
MANDING-JOGO, JOGO-JERI, JERI-JALKUNA

Genetic Relations	Language Name	Dialect Name
West		
Central-Southwestern		
Central		
Manding-Jogo		
Jogo-Jeri		
Jeri-Jalkuna	JERI	
	JALKUNA (BLE)	

 [Back to List](#)

GEOGRAPHIC LEGEND

- Mande language areas
- Mande dialect boundaries
- Non-Mande language areas
- Rivers
- Railroads
- Major roads
- Minor roads
- Lakes
- International borders
- Province borders
- ✈ Airports
- ▲ Mountains
- Populated places or villages
- Built up areas
- Medium metroplexes or cities
- Large metroplexes or cities
- ★ Capitals



MANDÉ LANGUAGE FAMILY
WEST, CENTRAL-SOUTHWESTERN, CENTRAL,
MANDING-JOGO, MANDING-VAI, VAI-KONO

Genetic Relations	Language Name	Dialect Name
West		
Central-Southwestern		
Central		
Manding-Jogo		
Manding-Vai		
Vai-Kono	Vai	
	Kono	

GEOGRAPHIC LEGEND

- █

 Mande language areas

---●---

 Mande dialect boundaries

□

 Non-Mande language areas

—

 Rivers

+

 Railroads

==

 Major roads

- - -

 Minor roads

▢

 Lakes

—

 International borders
- ...

 Province borders

✈

 Airports

▲

 Mountains

•

 Populated places or villages

●

 Built up areas

■

 Medium metroplexes or cities

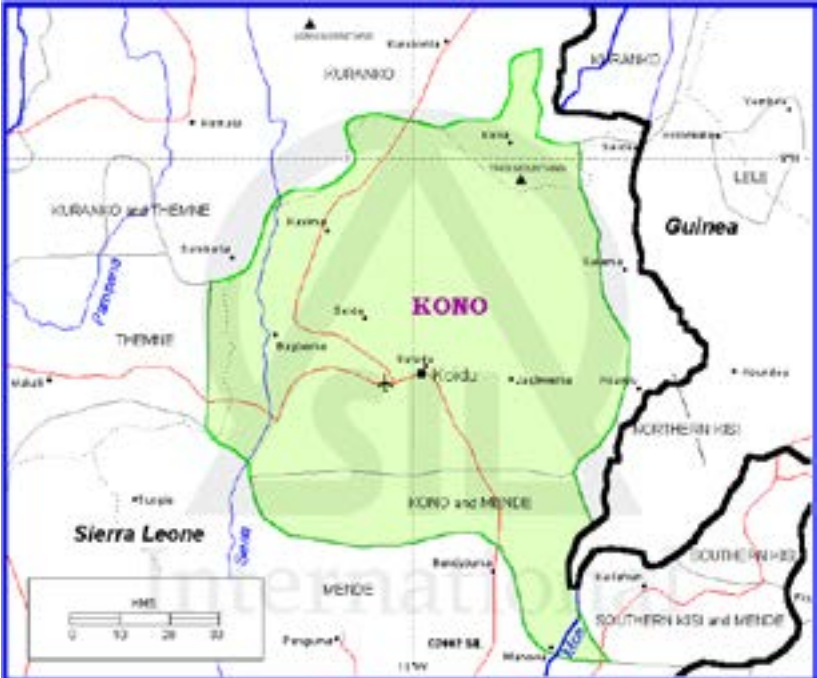
■

 Large metroplexes or cities

★

 Capitals

[Back to List](#)



MANDÉ LANGUAGE FAMILY
WEST, CENTRAL-SOUTHWESTERN, CENTRAL,
MANDING-JOGO, MANDING-VAI, MANDING-
MOKOLE, MOKOLE, KAKABE

Genetic Relations	Language Name	Dia
West		
Central-Southwestern		
Central		
Manding-Jogo		
Manding-Vai		
Manding-Mokole		
Mokole		
	KAKABE	
	MOGOFIN	
	KORANKO	
	LELE	

[Back to List](#)

GEOGRAPHIC LEGEND

- █ Mande language areas

--- Mande dialect boundaries

□ Non-Mande language areas

— Rivers

— Railroads

— Major roads

— Minor roads

□ Lakes

— International borders
- Province borders

✈ Airports

▲ Mountains

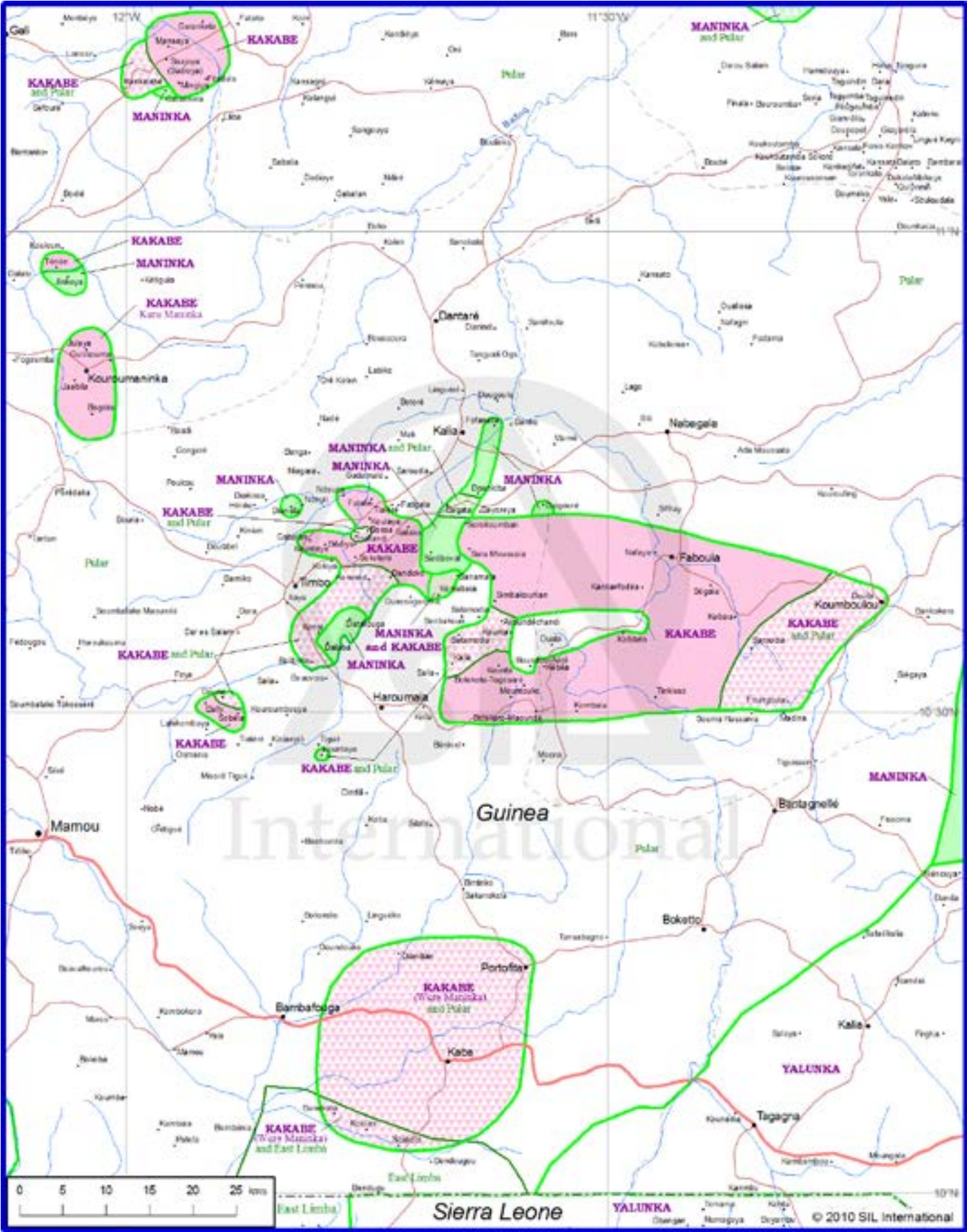
• Populated places or villages

• Built up areas

■ Medium metroplexes or cities

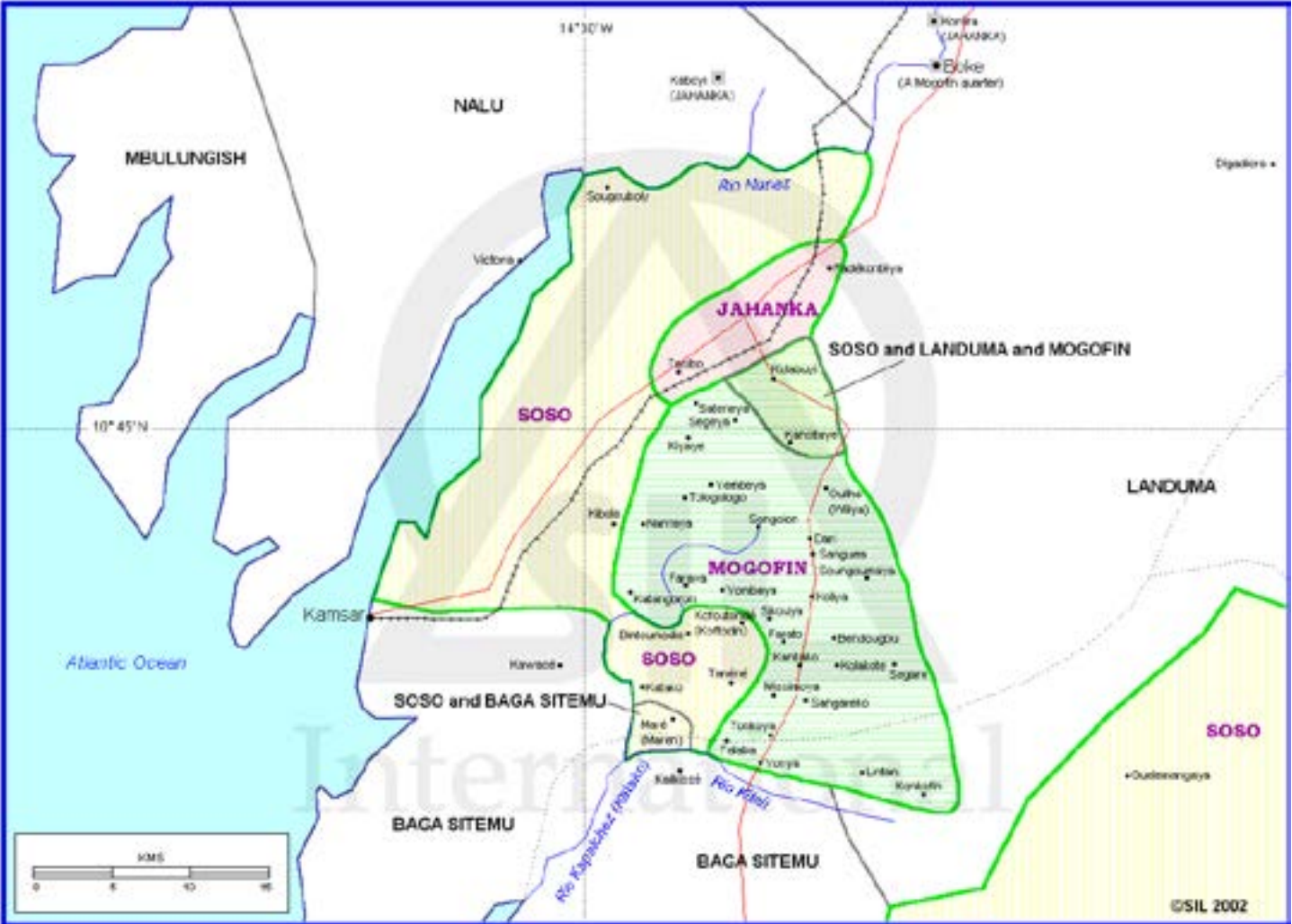
■ Large metroplexes or cities

★ Capitals



MANDÉ LANGUAGE FAMILY
West, Central-Southwestern, Central,
Manding-Jogo, Manding-Vai, Manding-
Mokole, Mokole, Mogofin

Genetic Relations	Language Name	Dialect Name
West		
Central-Southwestern		
Central		
Manding-Jogo		
Manding-Vai		
Manding-Mokole		
Mokole	KAKABE	
	MOGOFIN	
	KORANKO	
	LELE	



[Back to List](#)

GEOGRAPHIC LEGEND

- Mande language areas
- Mande dialect boundaries
- Non-Mande language areas
- Rivers
- Railroads
- Major roads
- Minor roads
- Lakes
- International borders
- Province borders
- ✈ Airports
- ▲ Mountains
- Populated places or villages
- Built up areas
- Medium metroplexes or cities
- Large metroplexes or cities
- ★ Capitals

MANDÉ LANGUAGE FAMILY
West, Central-Southwestern, Central,
Manding-Jogo, Manding-Vai, Manding-
Mokole, Mokole, Koranko and Lele

Genetic Relations	Language Name	Dialect Name
West		
Central-Southwestern		
Central		
Manding-Jogo		
Manding-Vai		
Manding-Mokole		
Mokole		
	KAKABE	
	MOGOFIN	
	KORANKO	
	LELE	

[Back to List](#)

GEOGRAPHIC LEGEND

- Mande language areas

Mande dialect boundaries

Non-Mande language areas

Rivers

Railroads

Major roads

Minor roads

Lakes

International borders
- Province borders

Airports

Mountains

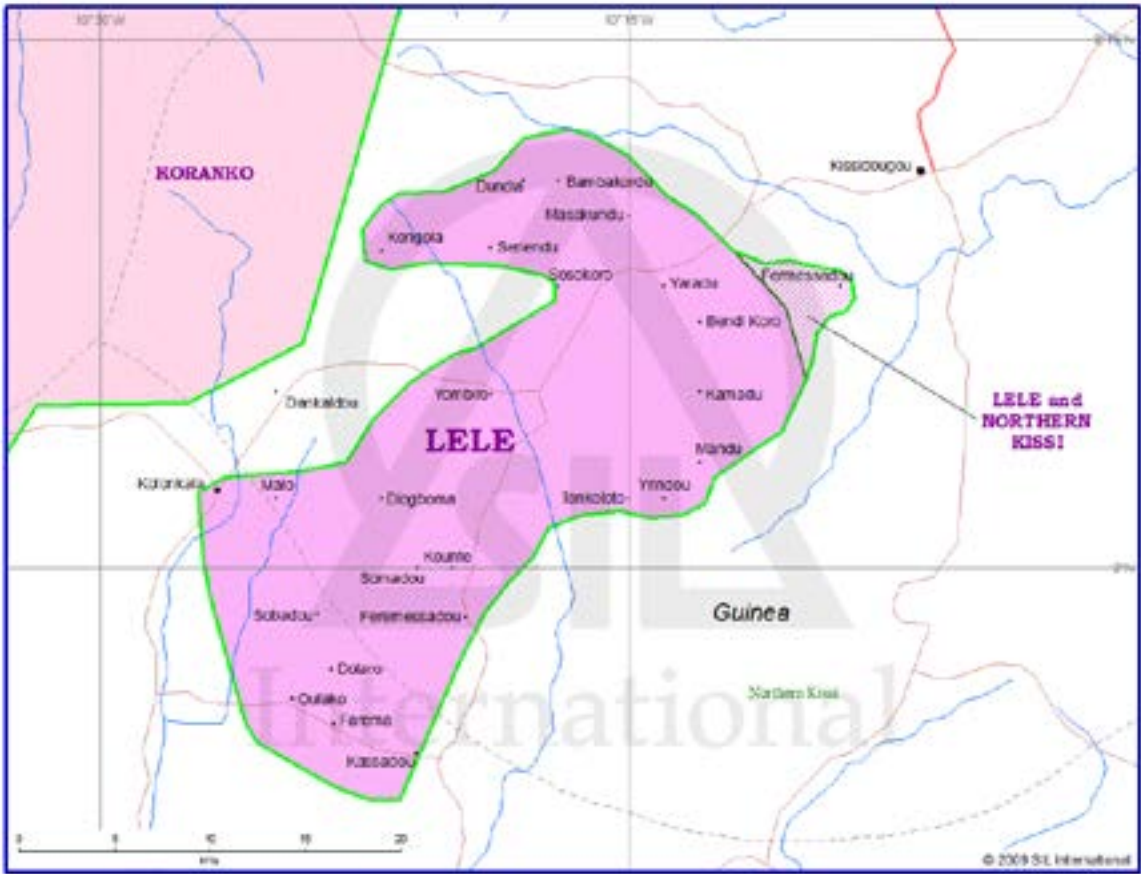
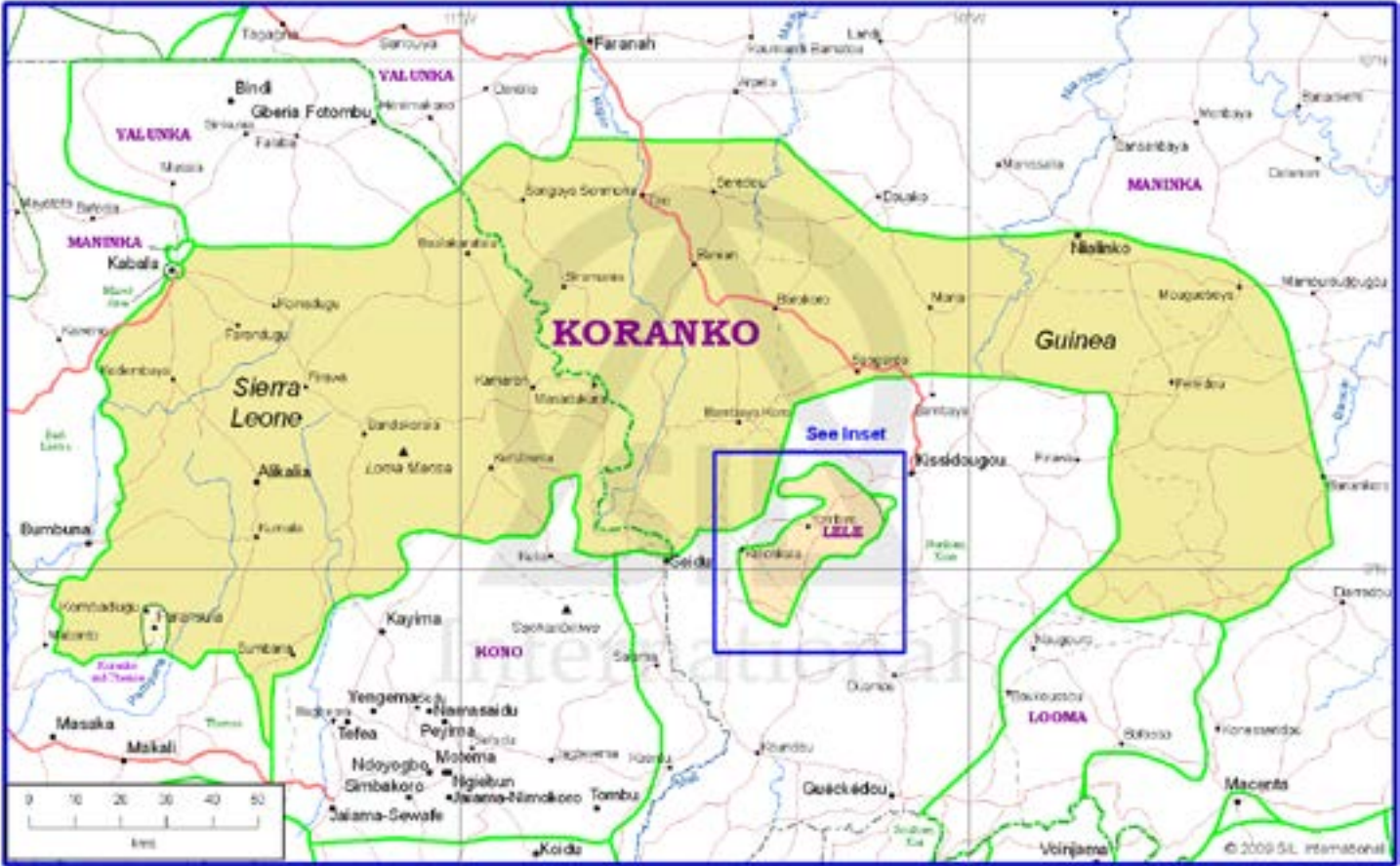
Populated places or villages

Built up areas

Medium metroplexes or cities

Large metroplexes or cities

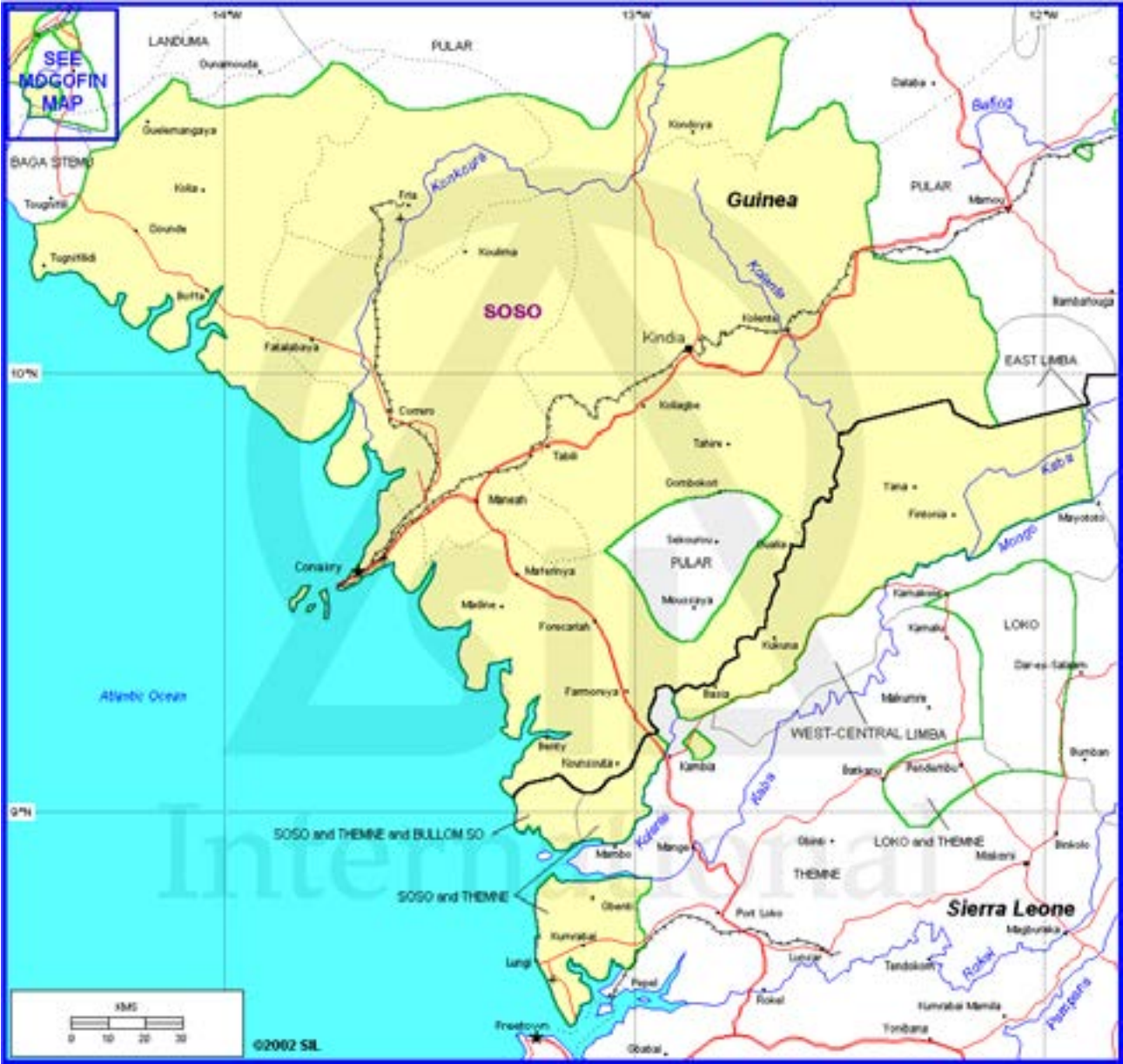
Capitals



MANDÉ LANGUAGE FAMILY
West, Central-Southwestern,
Central, Susu-Yalunka, Soso

Genetic Relations	Language Name
West	
Central-Southwestern	
Central	
Susu-Yalunka	
	Soso
	Yalunka (Jallonke)

Back to List



GEOGRAPHIC LEGEND

- █

 Mande language areas
- - -

 Mande dialect boundaries
- Non-Mande language areas
- Rivers
- +

 Railroads
- ==

 Major roads
- - -

 Minor roads
- Lakes
- International borders

- - -

 Province borders

✈

 Airports

▲

 Mountains

•

 Populated places or villages

●

 Built up areas

■

 Medium metropolises or cities

■

 Large metropolises or cities

★

 Capitals

MANDÉ LANGUAGE FAMILY
West, Central-Southwestern, Central, Susu-
Yalunka, Yalunka and Jallonke

Genetic Relations	Language Name
West	
Central-Southwestern	
Central	
Susu-Yalunka	
	Soso
	Yalunka (Jallonke)

GEOGRAPHIC LEGEND

- █

 Mande language areas

→

 Mande dialect boundaries

□

 Non-Mande language areas

—

 Rivers

+

 Railroads

—

 Major roads

—

 Minor roads

□

 Lakes

—

 International borders
- Province borders

✈

 Airports

▲

 Mountains

•

 Populated places or villages

●

 Built up areas

■

 Medium metroplexes or cities

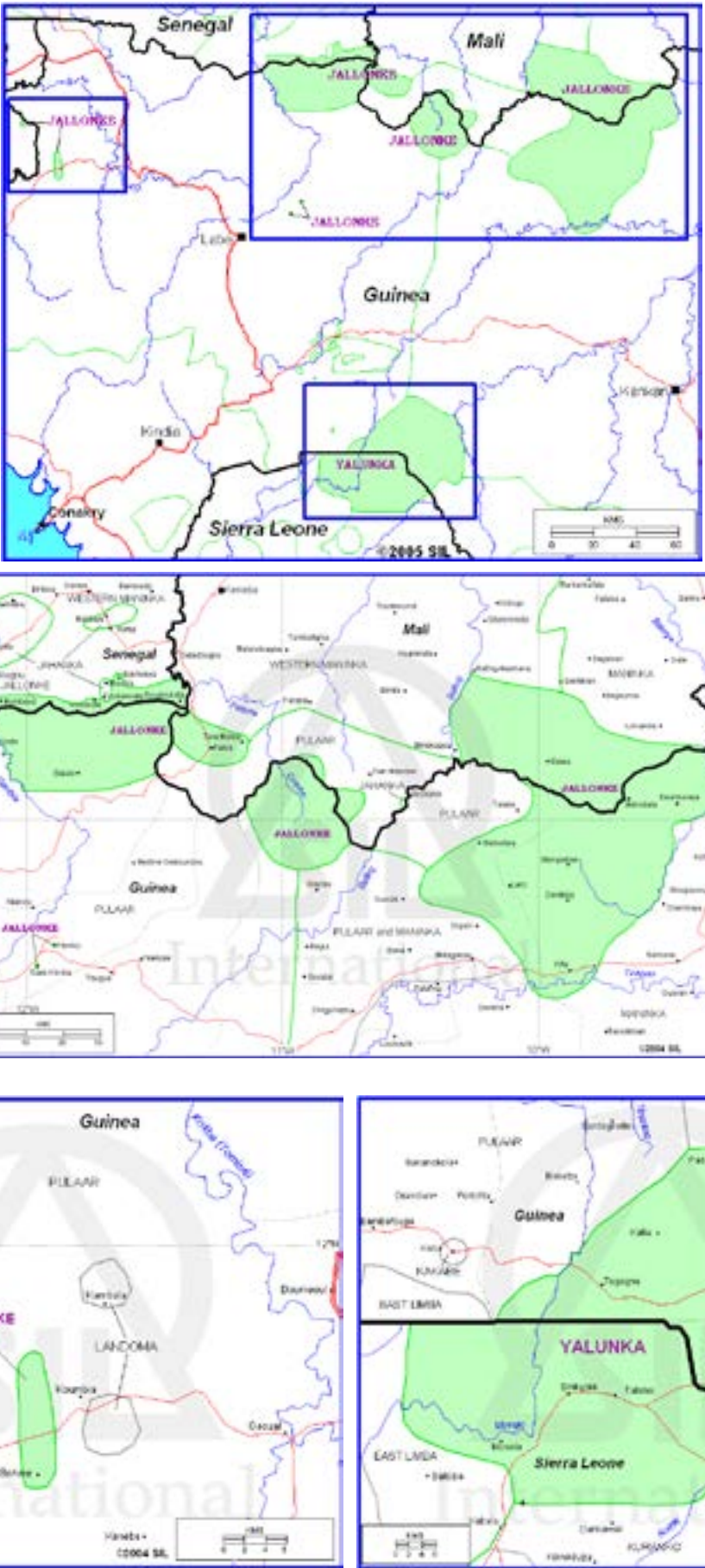
■

 Large metroplexes or cities

★

 Capitals

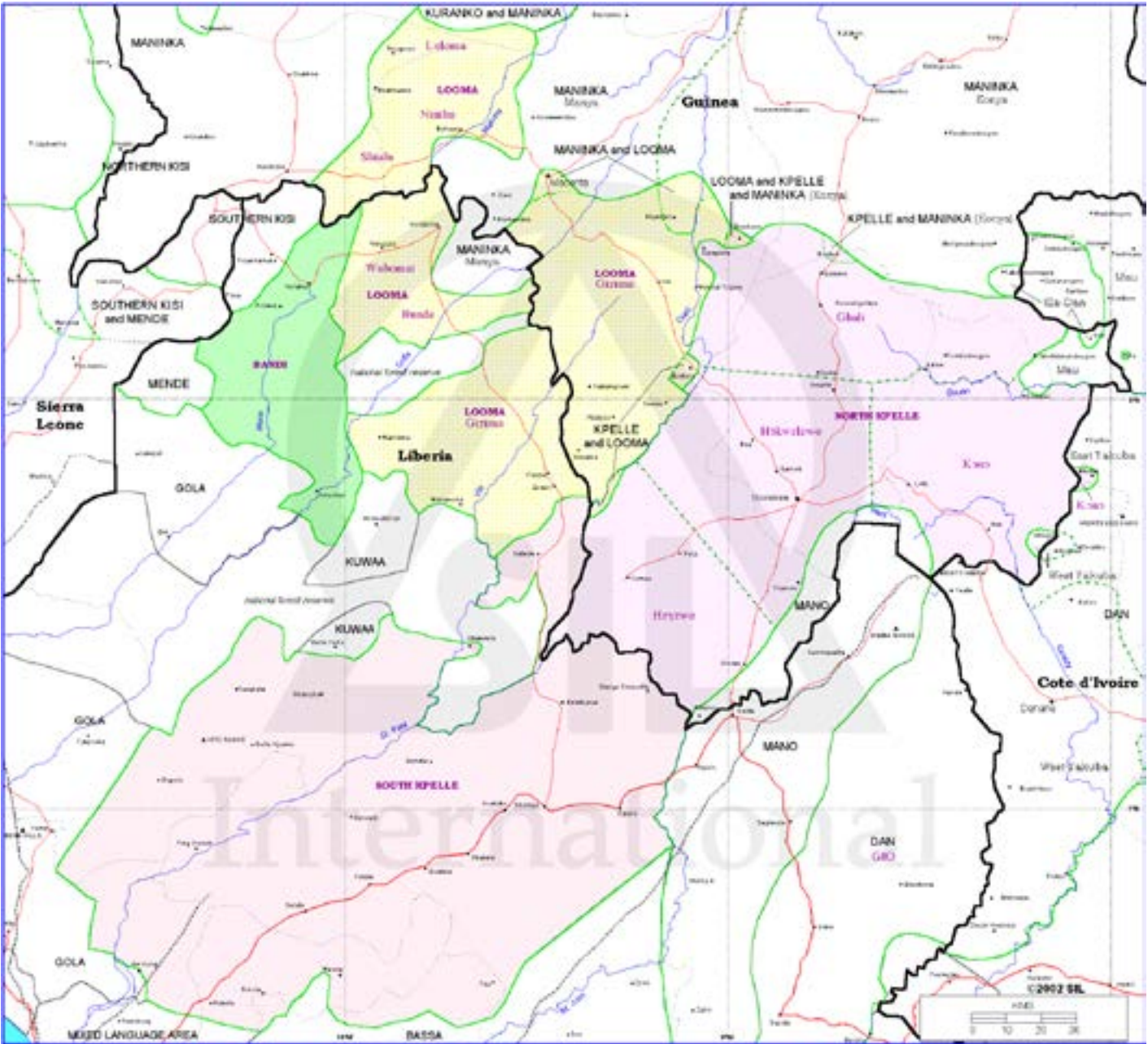
[Back to List](#)



MANDÉ LANGUAGE FAMILY
West, Central-Southwestern, Southwestern,
Kpelle and Mende-Looma

Genetic Relations	Language Name	Dialect Name
West		
Central-Southwestern		
Southwestern		
Kpelle	North Kpelle	Kono Gbali H3kwelewo Heyewo
	South Kpelle	
Mende-Looma	Looma	Luloma Nimbu Shialu Wuboma Bunde Gizima
Mende-Bandi	Bandi	
	Mende, Loko	

[Back to List](#)



GEOGRAPHIC LEGEND

█ Mande language areas

--- Mande dialect boundaries

□ Non-Mande language areas

— Rivers

— Railroads

— Major roads

— Minor roads

□ Lakes

— International borders

--- Province borders

✈ Airports

▲ Mountains

• Populated places or villages

• Built up areas

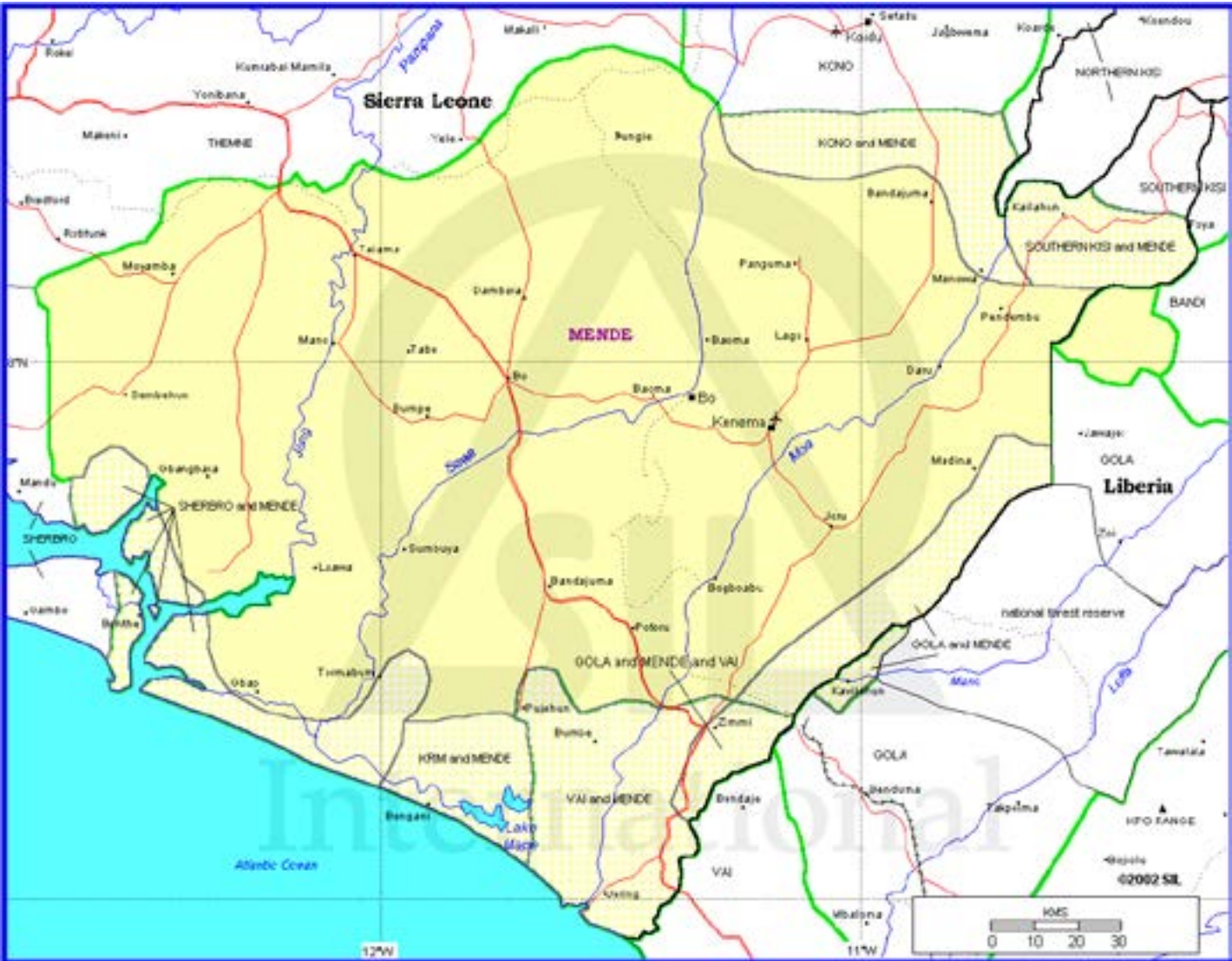
■ Medium metroplexes or cities

■ Large metroplexes or cities

★ Capitals

MANDÉ LANGUAGE FAMILY
West, Central-Southwestern, Southwestern,
Mende-Looma, Mende-Bandi, Mende

Genetic Relations	Language Name	Dialect Name
West		
Central-Southwestern		
Southwestern		
Kpelle	North Kpelle	Kono Gballi H5kwelewo Heyewo
	South Kpelle	
Mende-Looma	Looma	Luloma Ninibu Shialu Wuboma Bunde Gizima
Mende-Bandi	Bandi	
	Mende, Loko	



[Back to List](#)

Mande language areas

Mande dialect boundaries

Non-Mande language areas

Rivers

Railroads

Major roads

Minor roads

Lakes

International borders

Province borders

Airports

Mountains

Populated places or villages

Built up areas

Medium metroplexes or cities

Large metroplexes or cities

Capitals

GEOGRAPHIC LEGEND

MANDÉ LANGUAGE FAMILY
West, Central-Southwestern, Southwestern,
Mende-Looma, Mende-Bandi, Loko

Genetic Relations	Language Name	Dialect Name
West		
Central-Southwestern		
Southwestern		
Kpelle	North Kpelle	Kono
		Gbali
		H5kwelewo
		Heyewo
	South Kpelle	
Mende-Looma	Looma	Luloma
		Ninibu
		Shialu
		Wuboma
		Bunde
		Gizima
Mende-Bandi	Bandi	
	Mende, Loko	

 [Back to List](#)

GEOGRAPHIC LEGEND

-  Mande language areas

 Mande dialect boundaries

 Non-Mande language areas

 Rivers

 Railroads

 Major roads

 Minor roads

 Lakes

 International borders
-  Province borders

 Airports

 Mountains

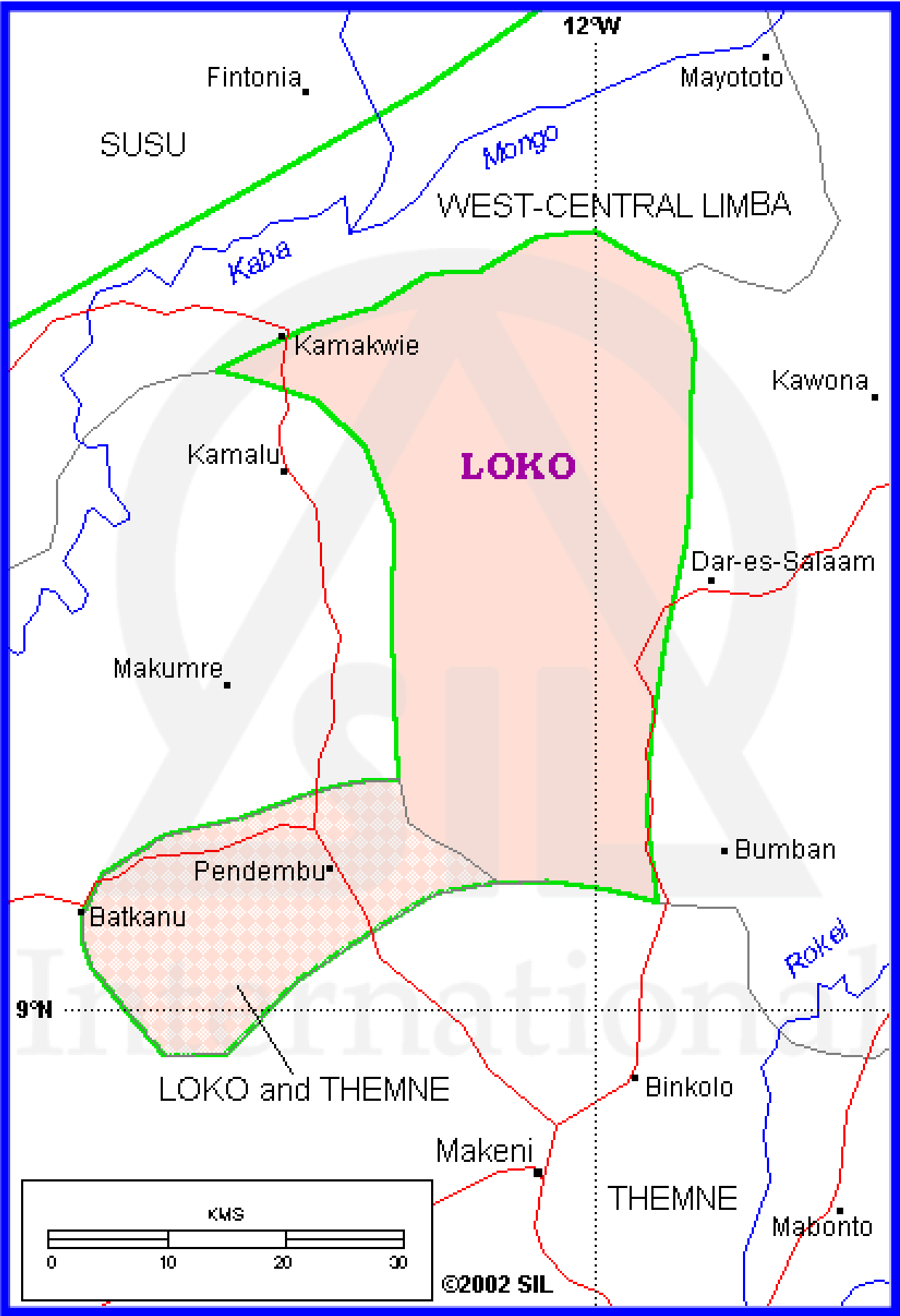
 Populated places or villages

 Built up areas

 Medium metroplexes or cities

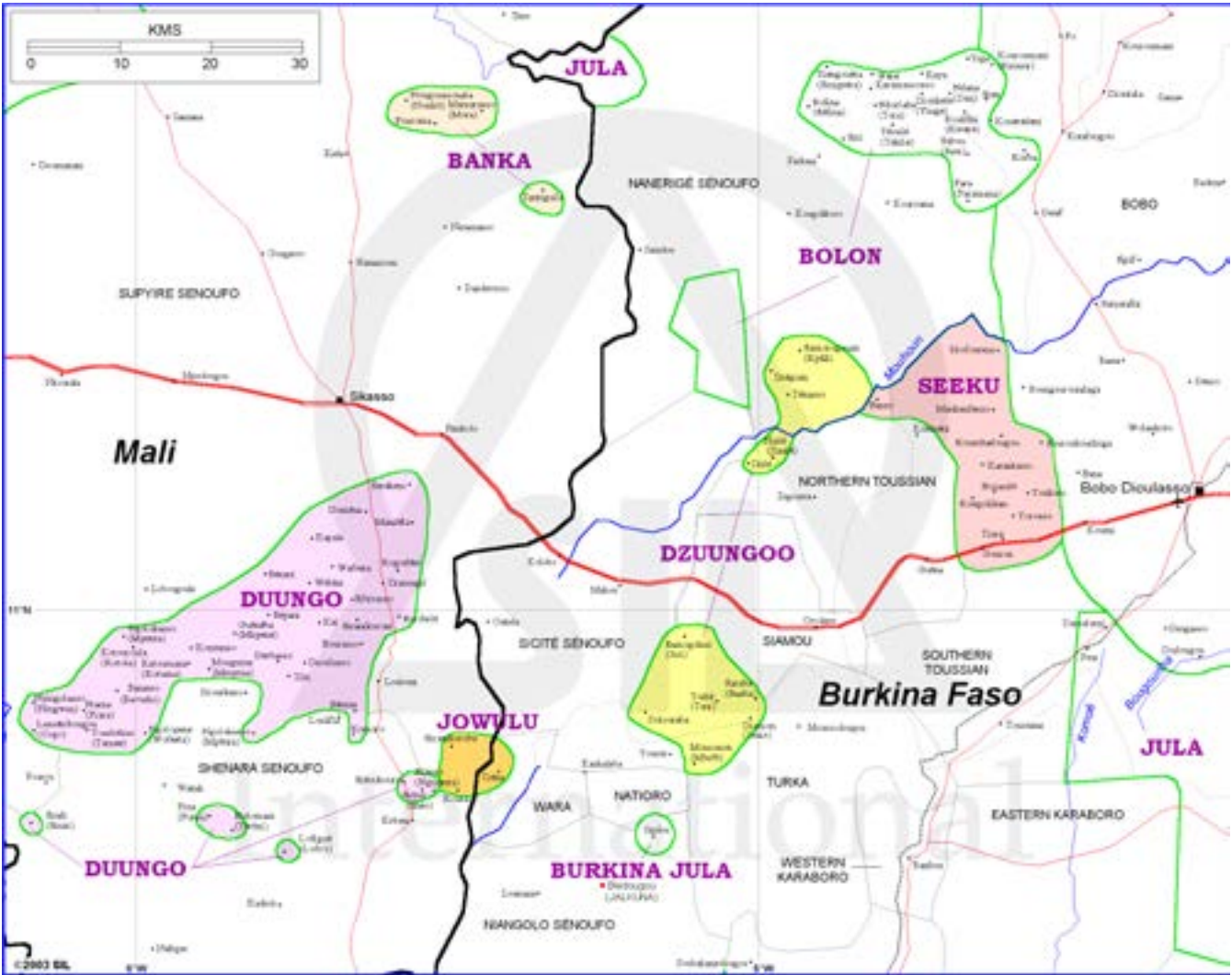
 Large metroplexes or cities

 Capitals



MANDÉ LANGUAGE FAMILY
West, Northwest,
Soninke-Dzuun, Dzuun-Seeku

Genetic Relations	Language Name	Dialect Name
West		
Northwest		
Soninke-Dzuun		
Dzuun-Seeku		
	SEEKU (SEMBLA)	
Dzuun	DZUUNGOO	
	DUUNGO	
	BANKA	
	JOWULU	



[Back to List](#)

GEOGRAPHIC LEGEND

- Mande language areas
- Mande dialect boundaries
- Non-Mande language areas
- Rivers
- Railroads
- Major roads
- Minor roads
- Lakes
- International borders
- Province borders
- ✈ Airports
- ▲ Mountains
- Populated places or villages
- Built up areas
- Medium metroplexes or cities
- Large metroplexes or cities
- ★ Capitals

MANDÉ LANGUAGE FAMILY
West, Northwest, Soninke-Dzuun, Soninke-Bobo

Genetic Relations	Language Name	Dialect Name
West		
Northwest		
Soninke-Dzuun		
Soninke-Bobo		
	BOBO	
		Tinkire
		Bana
		Yebe
		Kure
		Ba
		Sië
		Syã-da
		Běŋě
		Sogokire
		Vore

Back to List

GEOGRAPHIC LEGEND

□

Mande language areas

Mande dialect boundaries

□

Non-Mande language areas

—

Rivers

+

Railroads

—

Major roads

—

Minor roads

□

Lakes

—

International borders

Province borders

✈

Airports

▲

Mountains

•

Populated places or villages

•

Built up areas

■

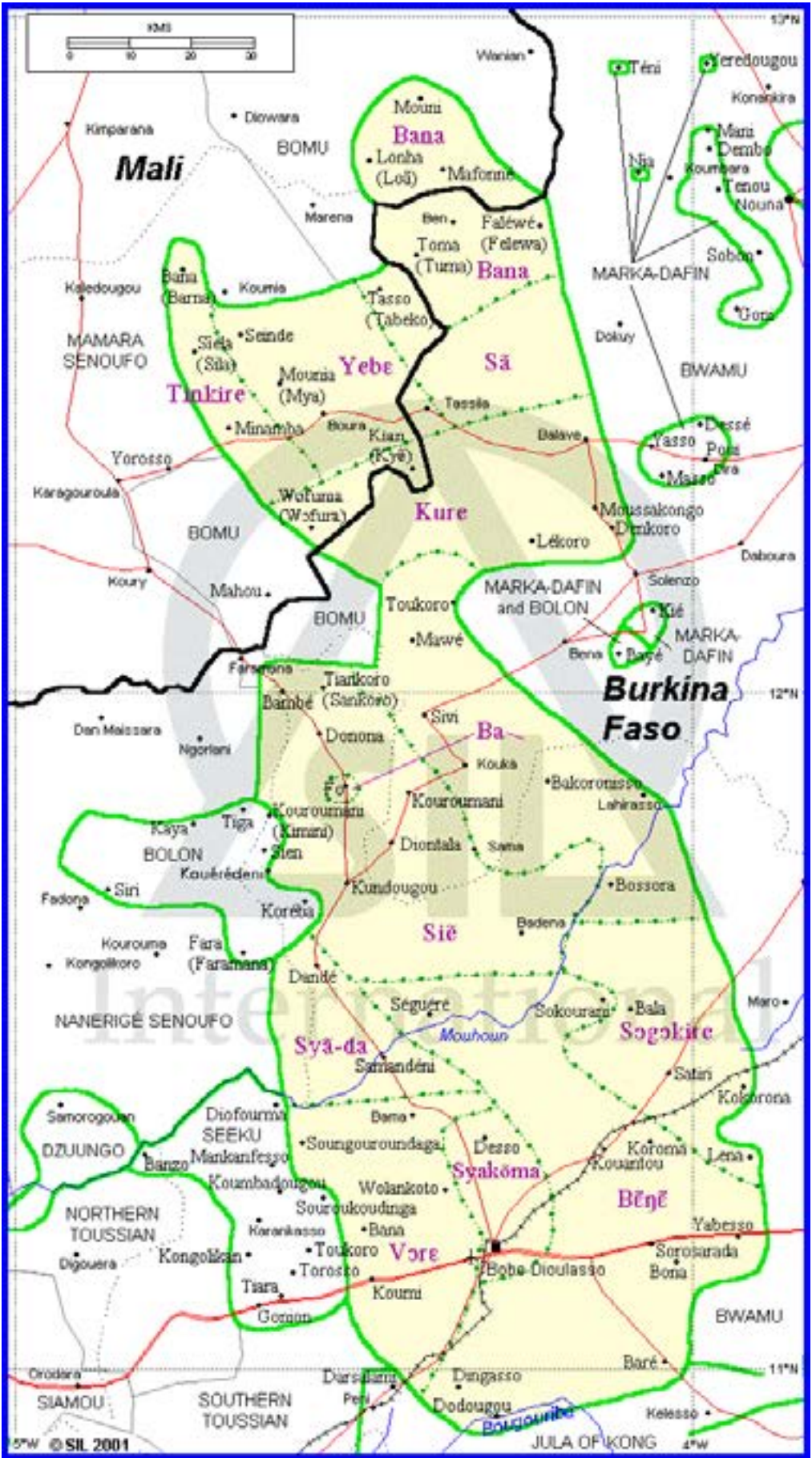
Medium metroplexes or cities

■

Large metroplexes or cities

★

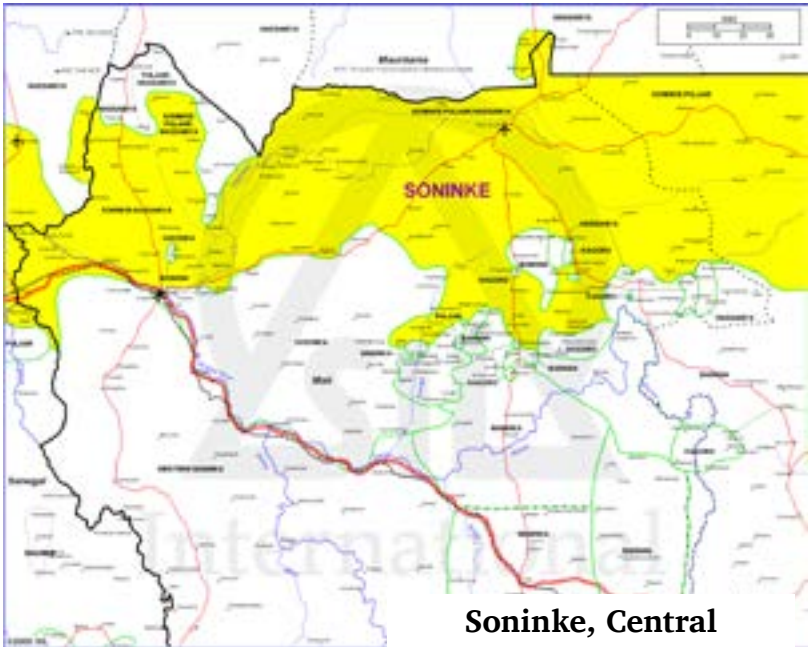
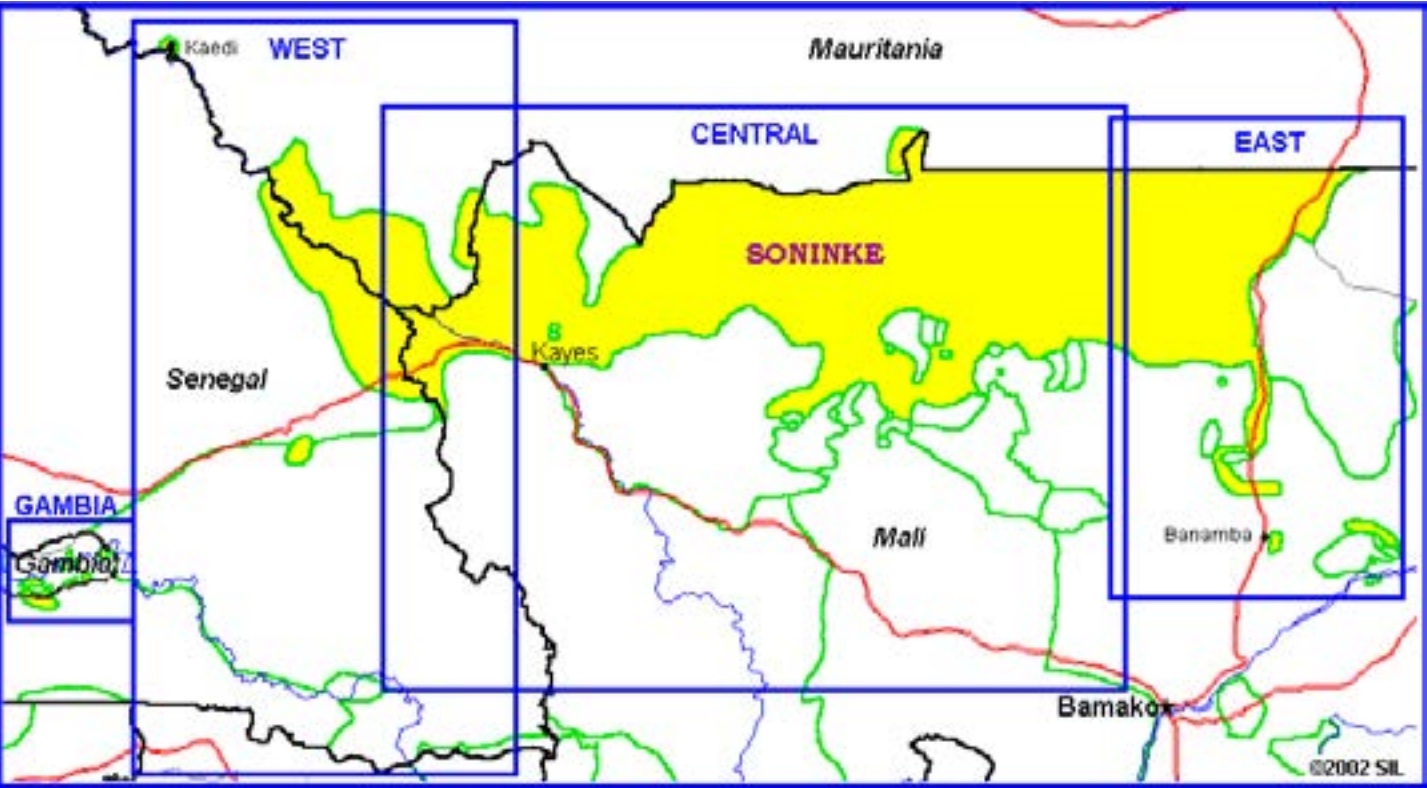
Capitals



MANDÉ LANGUAGE FAMILY
West, Northwest,
Soninke-Dzuun, Soninke-Bobo,
Soninke-Boso (SONINKE)

Genetic Relations	Language Names	Dialect Name
West		
Northwest		
Soninke-Dzuun		
Soninke-Bobo		
Soninke-Boso		
	SONINKE	
		AZER
		KINBAKKA
		XENQENNA

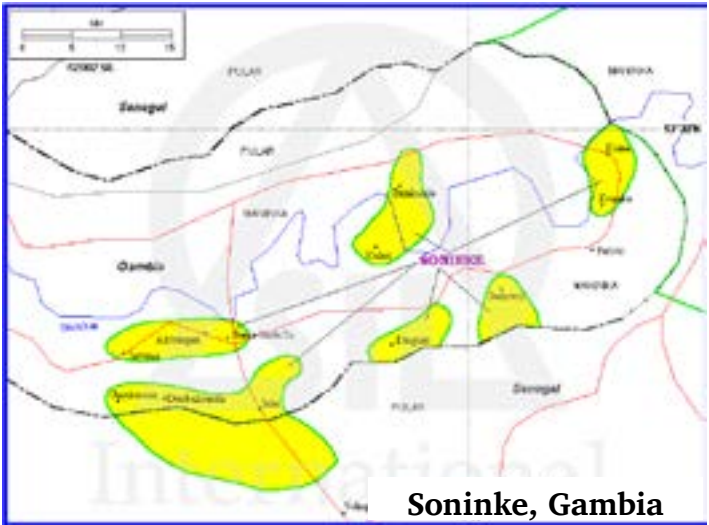
[Back to List](#)



Soninke, Central



Soninke, West



Soninke, Gambia



Soninke, East

MANDÉ LANGUAGE FAMILY
West, Northwest,
Soninke - Dzuun, Soninke - Bobo, Soninke - Bozo, Bozo

Genetic Relations	Language Names	Dialect Name
West		
Northwest		
Soninke-Dzuun		
Soninke-Bobo		
Soninke-Boso		
Boso		
Sorogama		
	SOROGAMA - PONDORI NORTH	
	SOROGAMA - PONDORI SOUTH	
	KOTYA	
	KOROND	
Eastern Boso		
	TIEYAXO	
	TIEMA CIEWE	
	HAINYAXO	

[Back to List](#)

GEOGRAPHIC LEGEND

- █

 Mande language areas

—

 Mande dialect boundaries

□

 Non-Mande language areas

—

 Rivers

+

 Railroads

—

 Major roads

—

 Minor roads

□

 Lakes

—

 International borders
- Province borders

✈

 Airports

▲

 Mountains

•

 Populated places or villages

●

 Built up areas

■

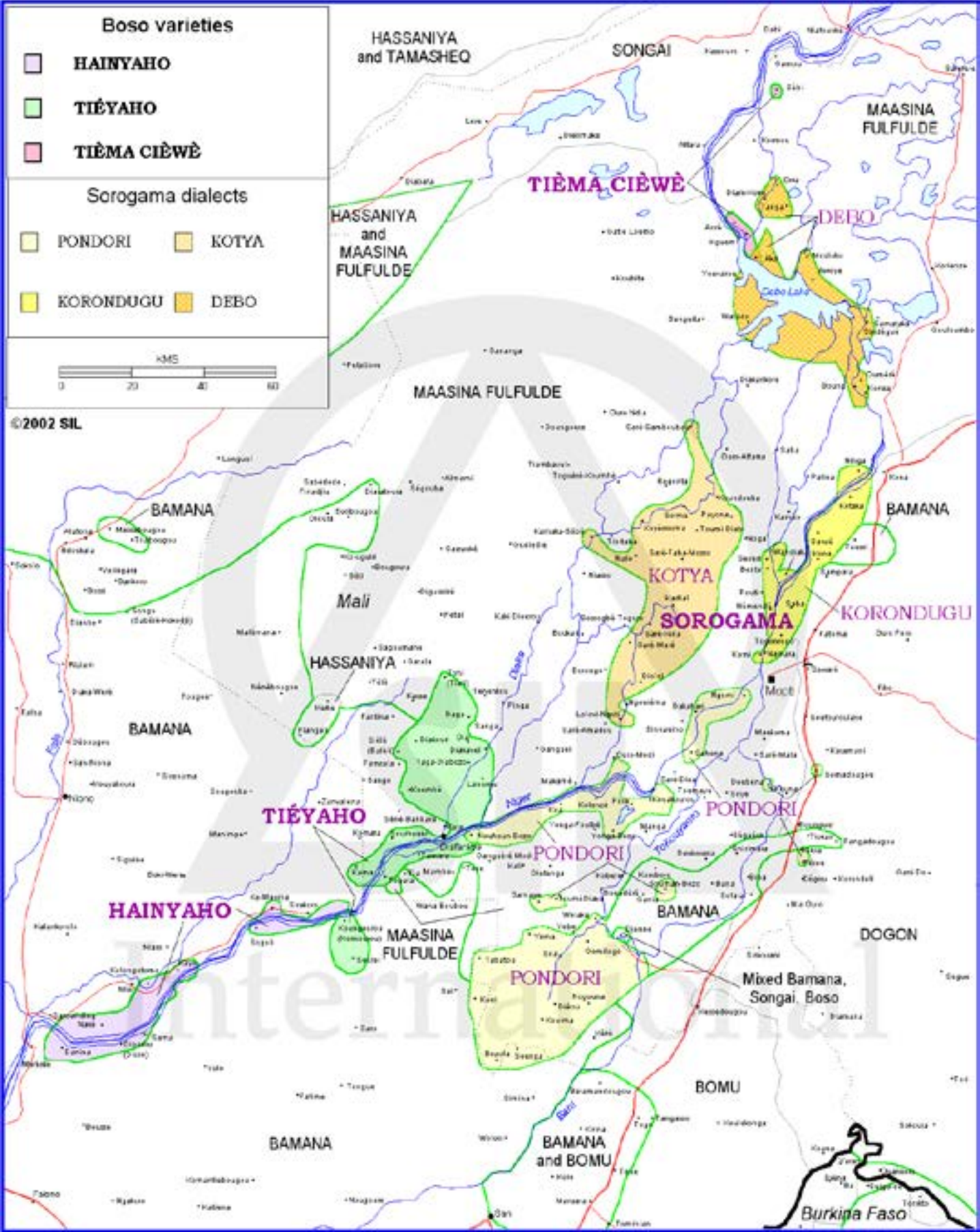
 Medium metroplexes or cities

■

 Large metroplexes or cities

★

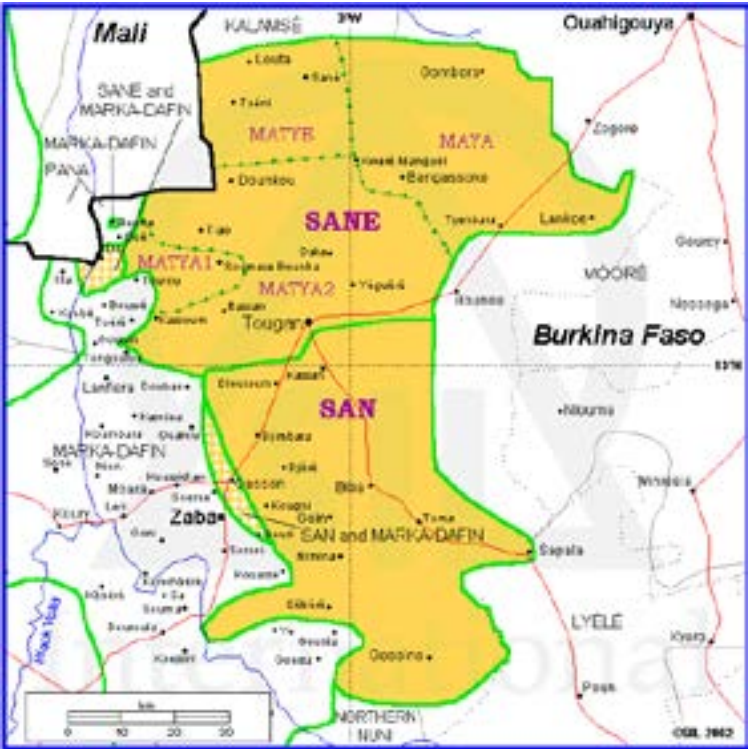
 Capitals



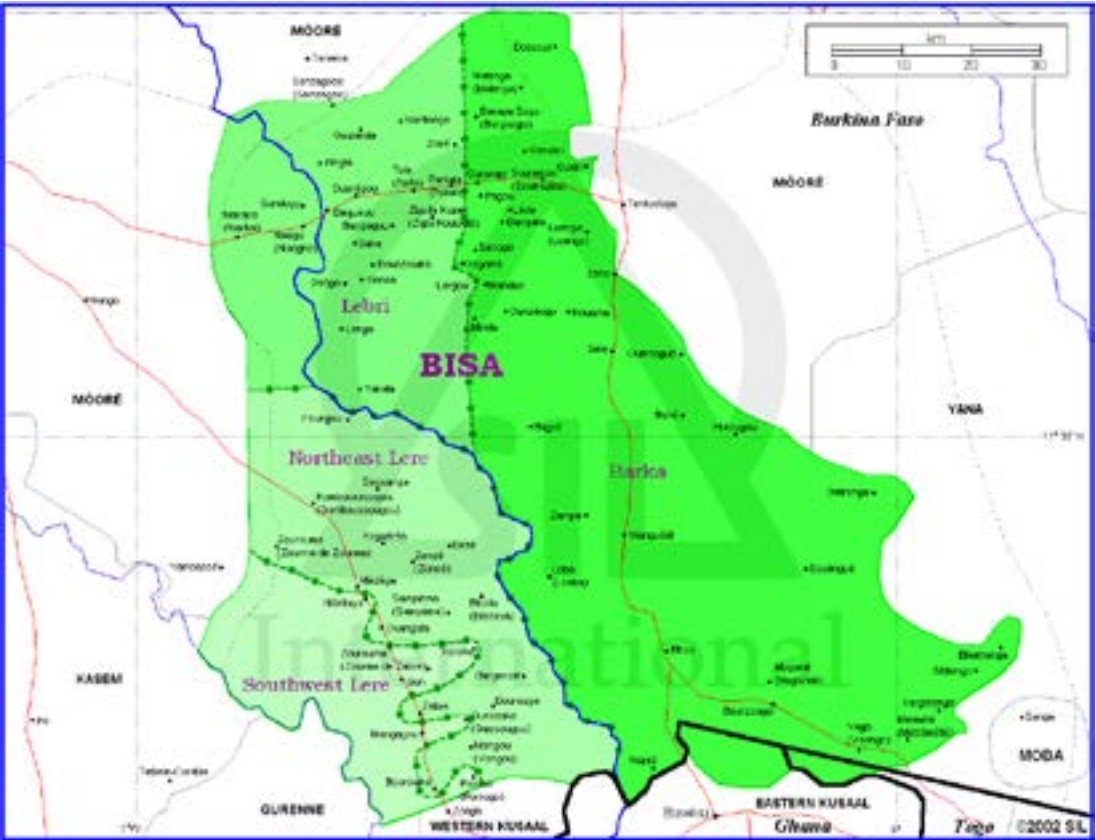
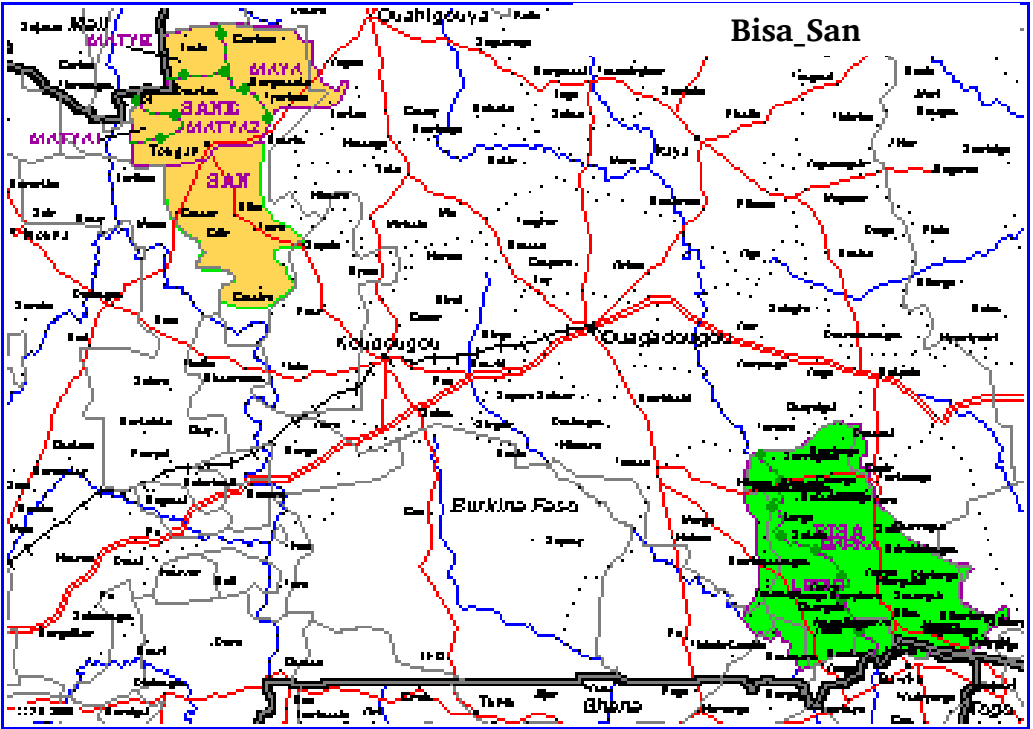
MANDÉ LANGUAGE FAMILY
East, Eastern-Eastern, Bisa, San and Sane

Genetic Relations	Language Name	Dialect Name
East		
Eastern-Eastern		
Bisa	BISA	BARKA
		LEBIR
San	SAN	KIEMBARA
		LOUTA
		TOMA
		TOUGAN
		ZOUMOU
	SANE	MAYA
		MATYE
		MATYA1
		MATYA2

[Back to List](#)



San and Sane



Bisa

MANDÉ LANGUAGE FAMILY
East, Eastern-Eastern, Busa

Genetic Relations	Language Name	Dialect Name
-------------------	---------------	--------------

East
Eastern-Eastern

Busa	BOKO
	BOKO BARU
	BUSA-BISA
	SHANGA
	TYENGA

[Back to List](#)

GEOGRAPHIC LEGEND

- Mande language areas

→

 Mande dialect boundaries

□

 Non-Mande language areas

—

 Rivers

+

 Railroads

—

 Major roads

—

 Minor roads

■

 Lakes

—

 International borders
- Province borders

✈

 Airports

▲

 Mountains

•

 Populated places or villages

•

 Built up areas

■

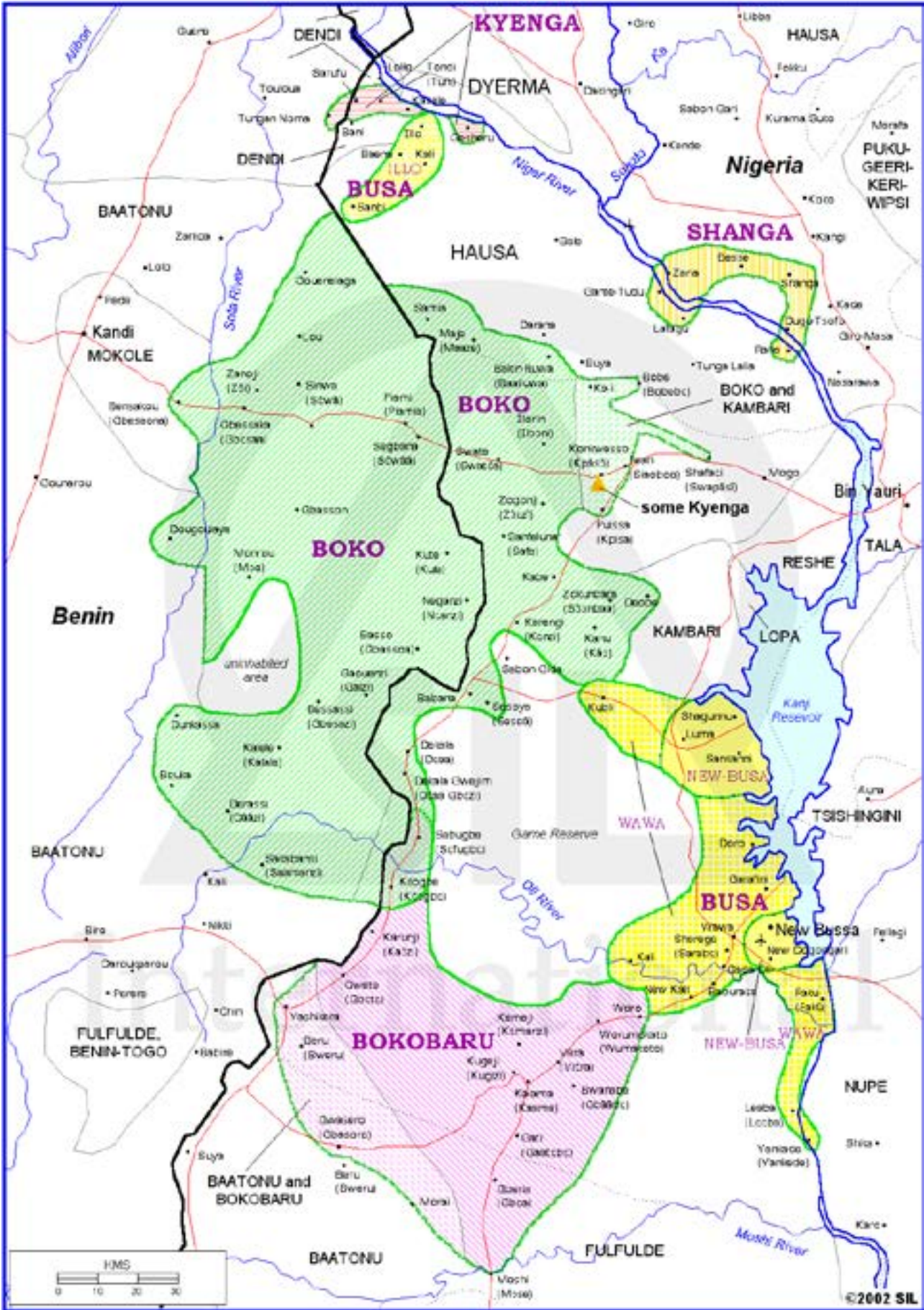
 Medium metroplexes or cities

■

 Large metroplexes or cities

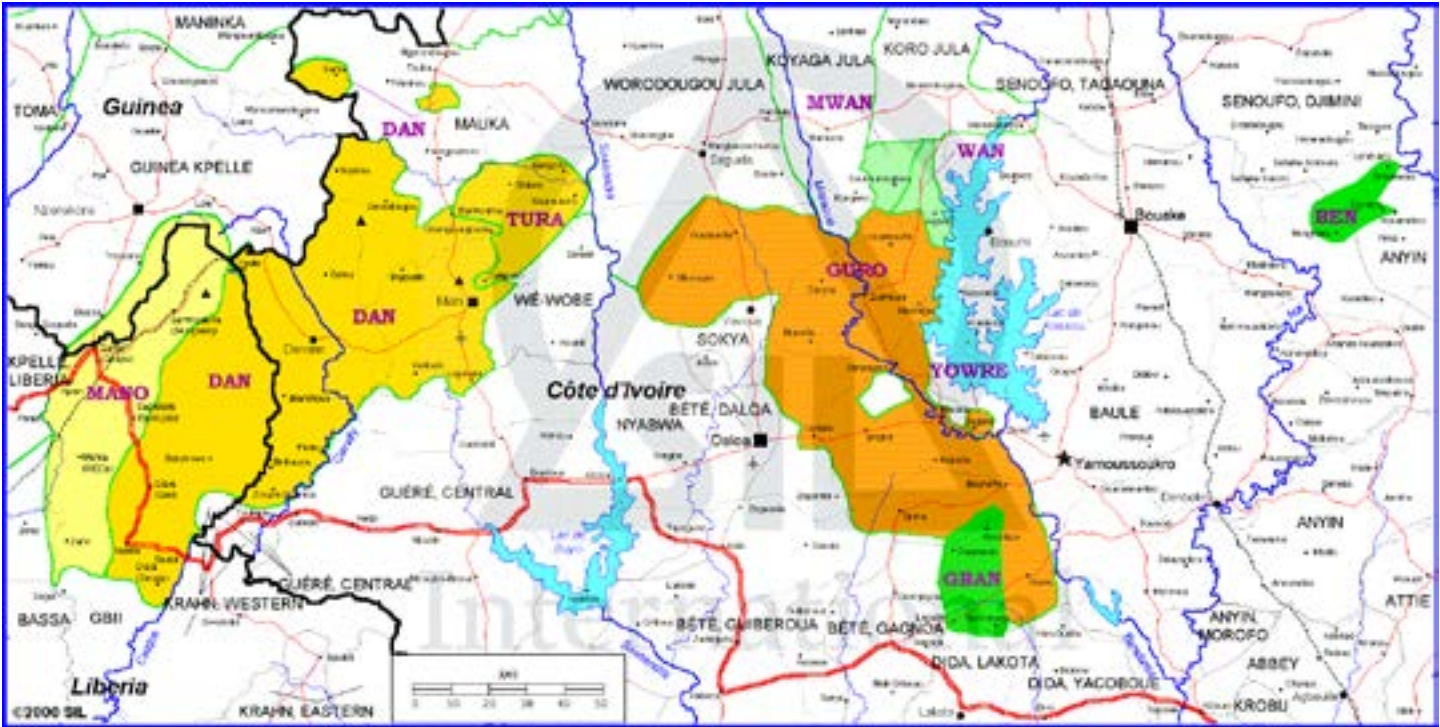
★

 Capitals



MANDÉ LANGUAGE FAMILY
East, Eastern-Southern (Includes Ben, Dan, Geban, Guro, Mano, Mwan, Tura, Wan)

Genetic Relations	Language Name	Dialect Name
East		
Eastern-Southern (Mani-Bandama)		
Guro-Tura		
Guro-Yaoure	GURO YAOURÉ	BHOO KLAN TAAN YAAN YOO
Tura-Dan-Mano	MANO	
Tura-Dan	DAN	EAST YAKUBA WEST YAKUBA GIO KLA
	TURA	BOO GWÉO NAÔ WÁADÚ YILIGELE
Nwa-Ben		
Ben-Gban	BEN GBAN	BOKABO BOKWA N'DA TUKA
Wan-Mwan	MWAN WAN	KEMU MIAMU



[Back to List](#)

GEOGRAPHIC LEGEND

- █

 Mande language areas

 Mande dialect boundaries

□

 Non-Mande language areas

—

 Rivers

+

 Railroads

—

 Major roads

—

 Minor roads

□

 Lakes

—

 International borders
- Province borders

✈

 Airports

▲

 Mountains

•

 Populated places or villages

•

 Built up areas

■

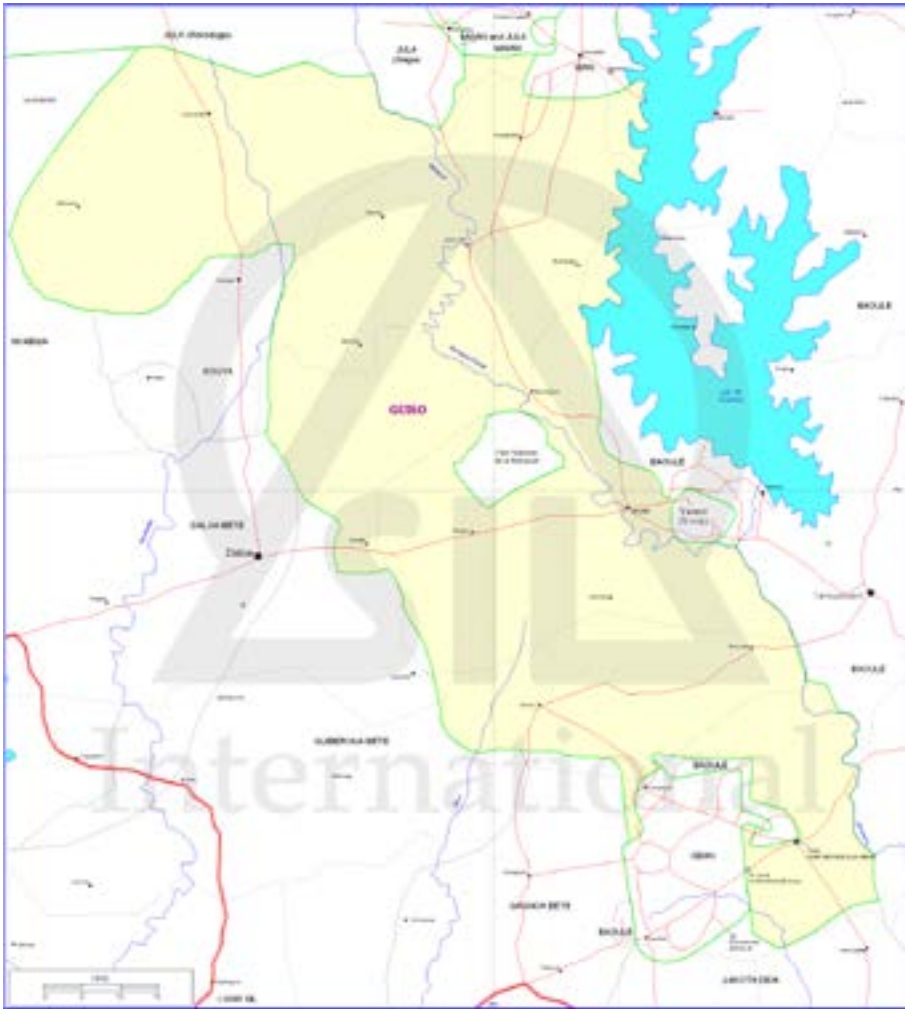
 Medium metroplexes or cities

■

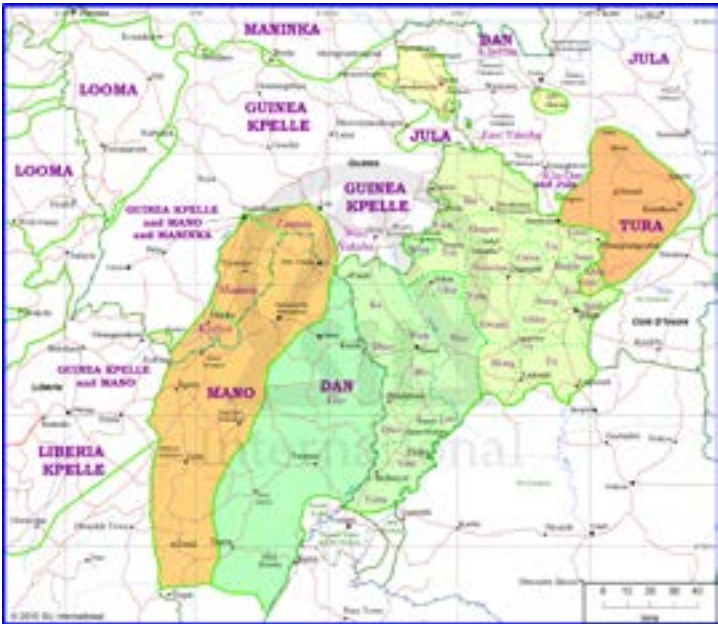
 Large metroplexes or cities

★

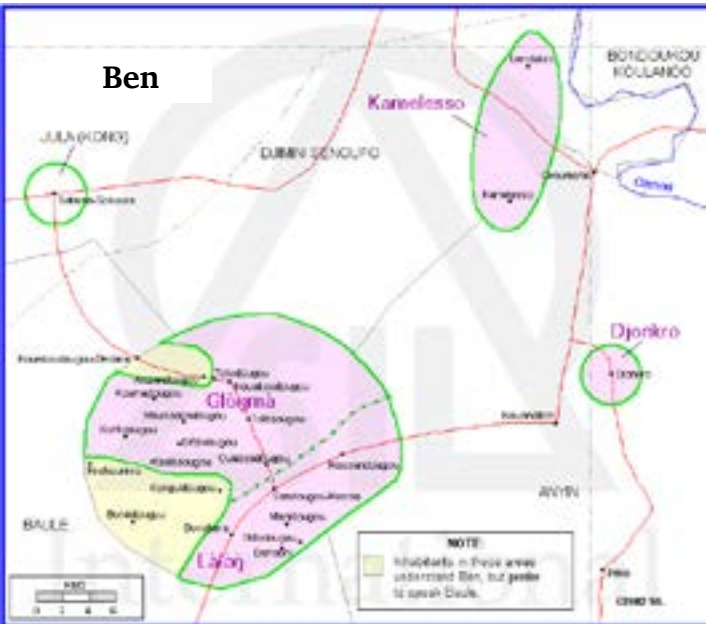
 Capitals



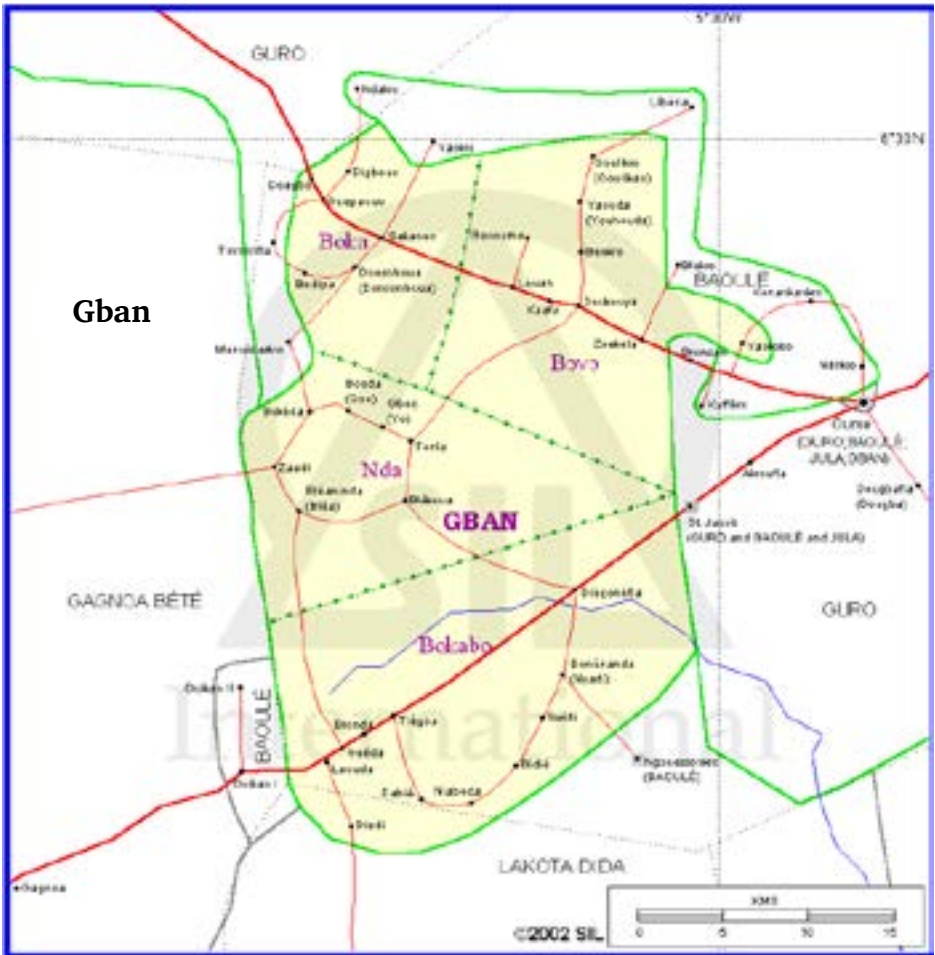
Guro



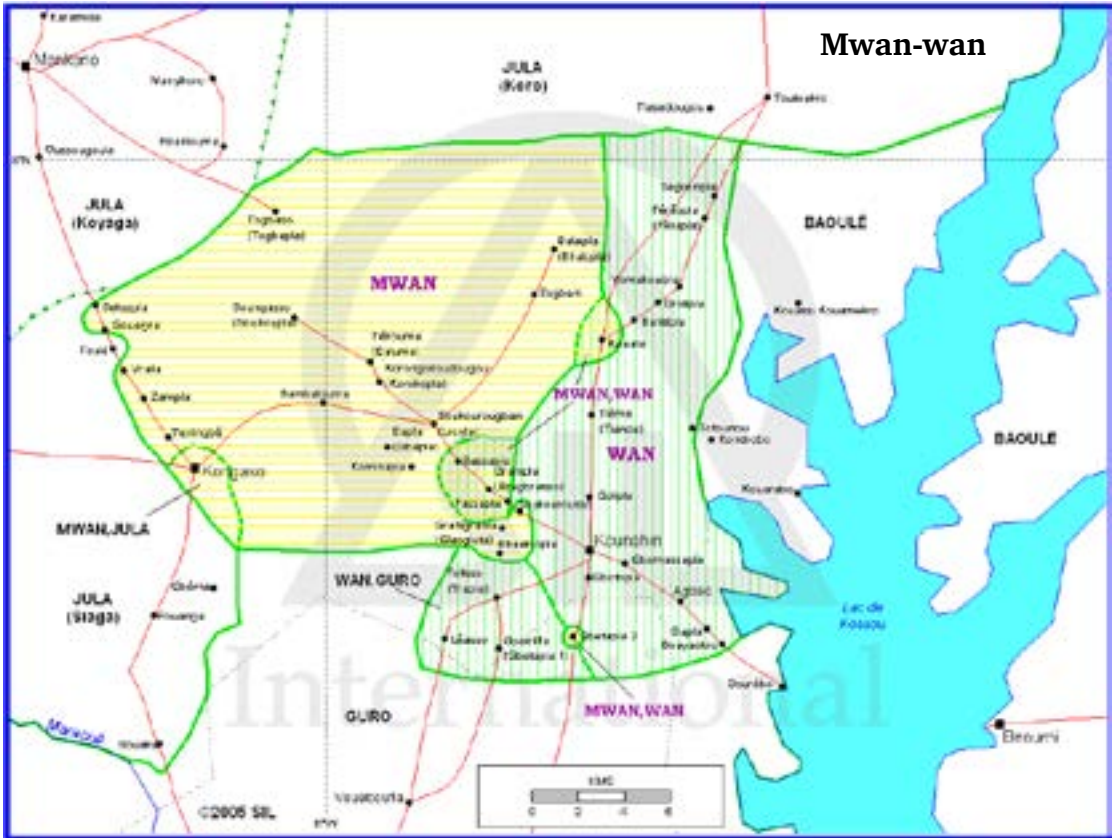
Dan-Mano-Tura



Ben



Gban



Mwan-wan

Manding Language Cluster

Manding is the largest language/dialect cluster of West Africa, with the total number of speakers exceeding 20 million. It is a typical dialectal continuum where sharp linguistic boundaries are rare, and language differences accumulate gradually with geographic distance. Within this continuum, several poles of gravity can be singled out: Maninka of Guinea, Standard Bamana, Mandinka, interethnic Jula, and Marka-Dafing. These poles can be referred to, with some reservations, as “languages.”¹ There are variants, such as Xasonka or Mauka, which cannot be compared to Bamana or Mandinka in their sociolinguistic weight, but still autonomous enough to be considered as “languages” from the viewpoint of both the identity of their speakers and their linguistic difference from other Manding variants. And there are numberless intermediary dialects that cannot sometimes be attached to one of the “languages” being intermediary between two (or even three) different poles of gravity within the continuum.

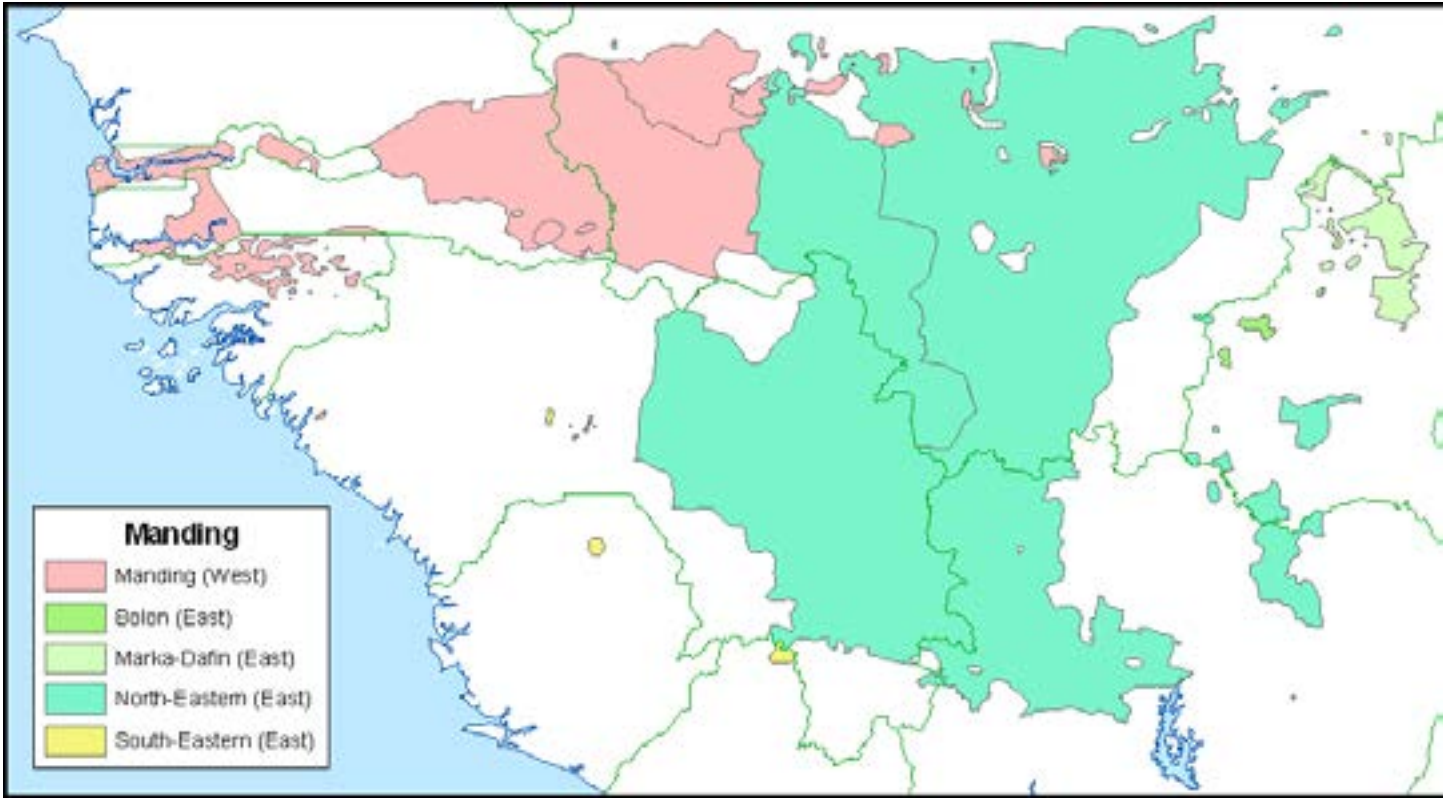
We tried to reflect this very challenging reality in the maps on the following pages. So, sometimes one won’t find language boundaries between what is usually believed to be separate languages. Passage from one linguistic pole of gravity to another will be pictured by a gradual change of colors for dialectal areas.

[Back to List](#)

¹ For discussion on the current linguonymes for the Manding variants, see: V. Vydrine. Who Speaks “Mandekan”? A Note on Current Use of Mande Ethnonyms and Linguonyms. // MANSA Newsletter, 29, Winter 1995-96, pp. 6-9. The same text was included into the “Introduction” to the “Manding-English Dictionary (Maninka, Bamana)” (Vol. 1. St. Petersburg: Dimitry Bulanin Publishing House, 1999, 315 p., by the same author).

MANDÉ LANGUAGE FAMILY OF WEST AFRICA: MANDING

This map shows the extent of the Manding cluster within the Mandé Language Family



Click on the name below to see a language or section in more detail.

[Manding as Lingua Franca](#)

West, Central-Southwestern, Central, Manding-Jogo, Manding-Vai, Manding-Mokole, Manding, Manding-East, [Marka-Dafin](#)
West, Central-Southwestern, Central, Manding-Jogo, Manding-Vai, Manding-Mokole, Manding, Manding-East, [Boon \(Bolon\)](#)
West, Central-Southwestern, Central, Manding-Jogo, Manding-Vai, Manding-Mokole, Manding, Manding-East, North-Eastern Manding, [Bamana](#)
West, Central-Southwestern, Central, Manding-Jogo, Manding-Vai, Manding-Mokole, Manding, Manding-East, North-Eastern/South-Eastern Manding, [Jula](#)
West, Central-Southwestern, Central, Manding-Jogo, Manding-Vai, Manding-Mokole, Manding, Manding-West, [Kagoro](#)
West, Central-Southwestern, Central, Manding-Jogo, Manding-Vai, Manding-Mokole, Manding, Manding-East, North-Eastern Manding, [Maninka \(Guinea and Sierra Leone\)](#)
West, Central-Southwestern, Central, Manding-Jogo, Manding-Vai, Manding-Mokole, Manding, Manding-West, Western Maninka, Jahanka, and Xasonka [\(Senegal and Mali\)](#)
West, Central-Southwestern, Central, Manding-Jogo, Manding-Vai, Manding-Mokole, Manding, Manding-West, [Mandinka \(Gambia and Senegal\)](#)
West, Central-Southwestern, Central, Manding-Jogo, Manding-Vai, Manding-Mokole, Manding, Manding-West, [Mandinka \(Guinea-Bissau\)](#)

Mandé Language Family (Manding)
Manding as Lingua Franca



[Back to Map](#)

Mandé Language Family
West, Central-Southwestern, Central, Manding-Jogo,
Manding-Vai, Manding-Mokole, Manding,
Manding-East, Marka-Dafin

Genetic Relations	Language Name	Dialect Name
West		
Central-Southwestern		
Central		
Manding-Jogo		
Manding-Vai		
Manding-Mokole		
Manding		
Manding-East		
	MARKA-DAFIN	

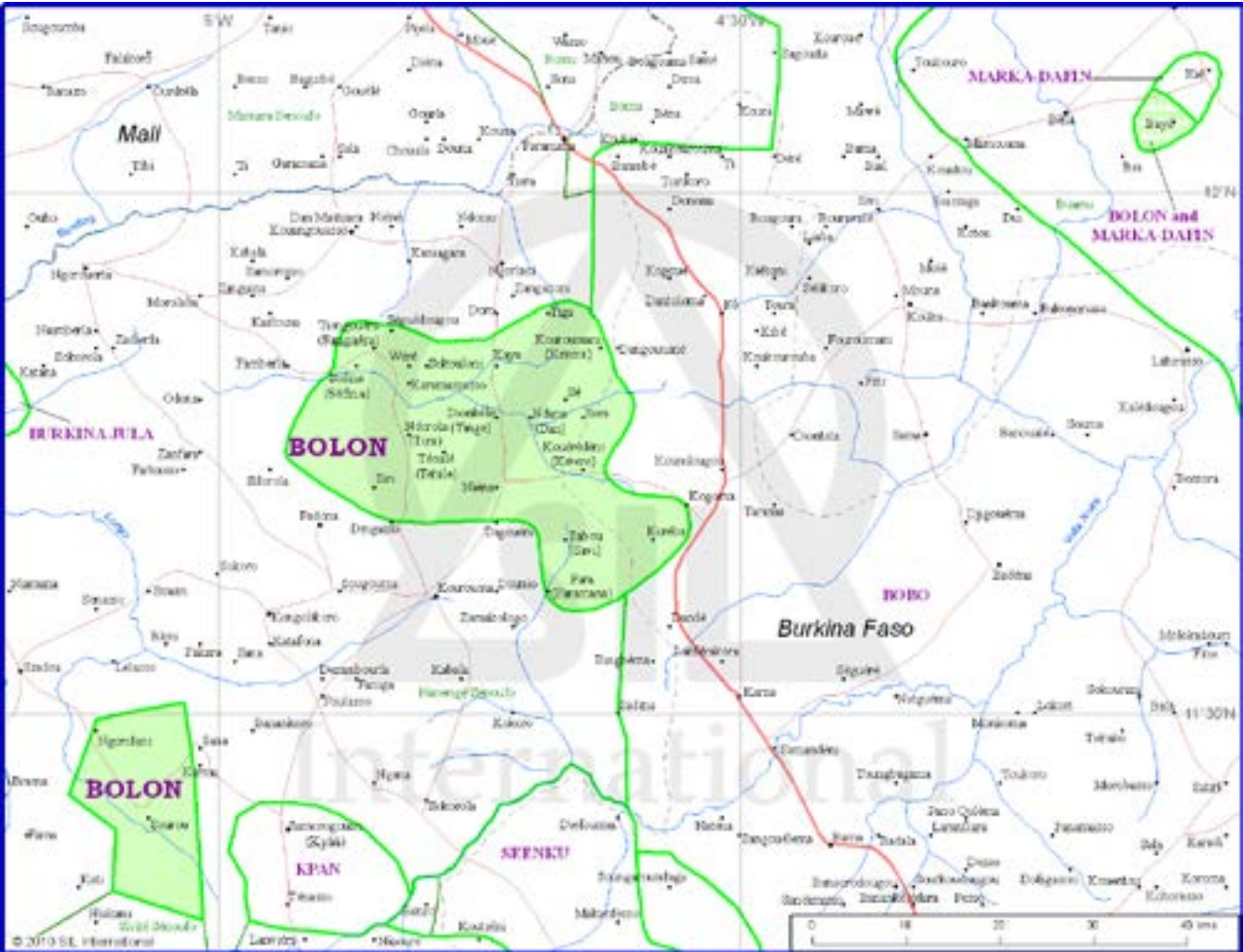


[Back to List](#)

Mandé Language Family
West, Central-Southwestern, Central,
Manding-Jogo, Manding-Vai, Manding-
Mokole, Manding, Manding-East (Bolon)

Genetic Relations	Language Name	Dialect Name
West		
Central-Southwestern		
Central		
Manding-Jogo		
Manding-Vai		
Manding-Mokole		
Manding		
Manding-East	BOON (BOLON)	

[Back to List](#)

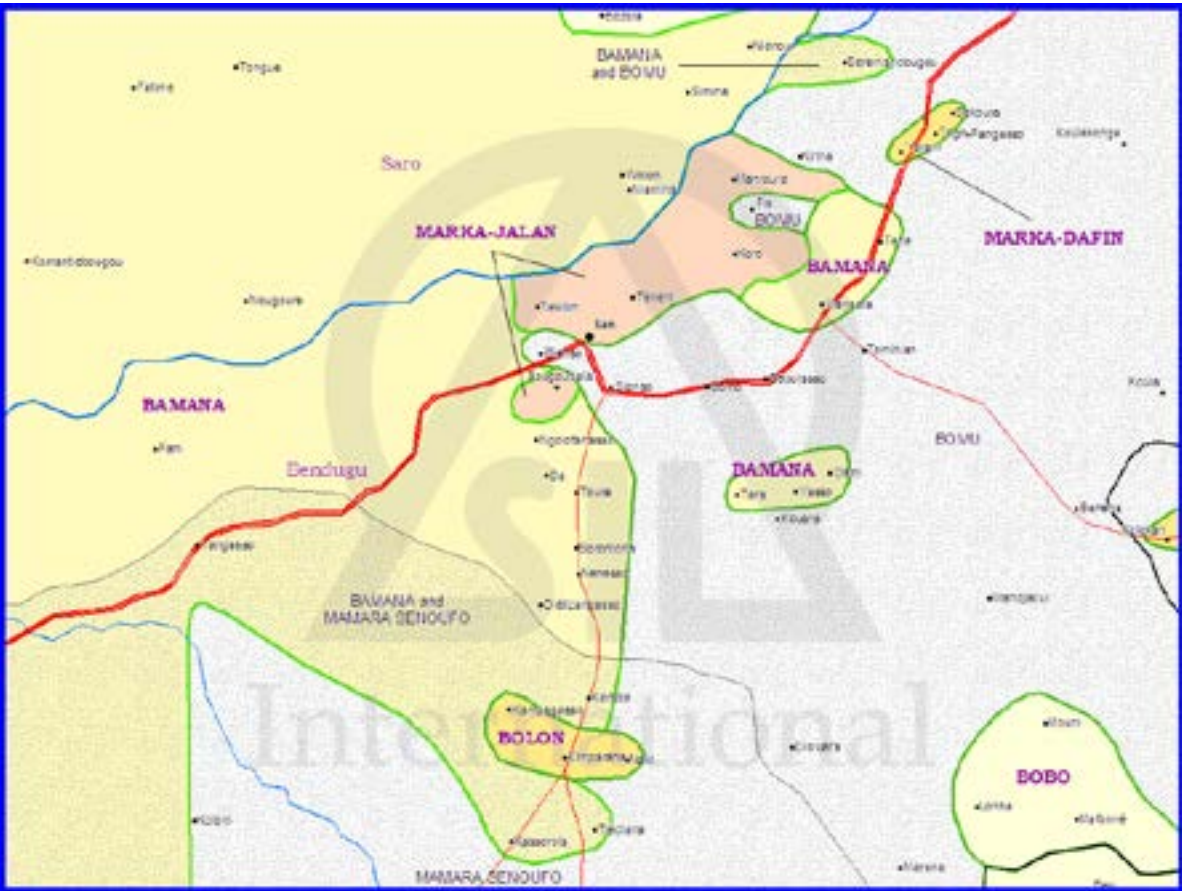


Mandé Language Family (Manding)
Manding-East, North-Eastern Manding,
Bamana, Urban koine

Genetic Relations	Language Name	Dialect Name
West		
Central-Southwestern		
Central		
Manding-Jogo		
Manding-Vai		
Manding-Mokole		
Manding		
Manding-East		
North-Eastern Manding	BAMANA	

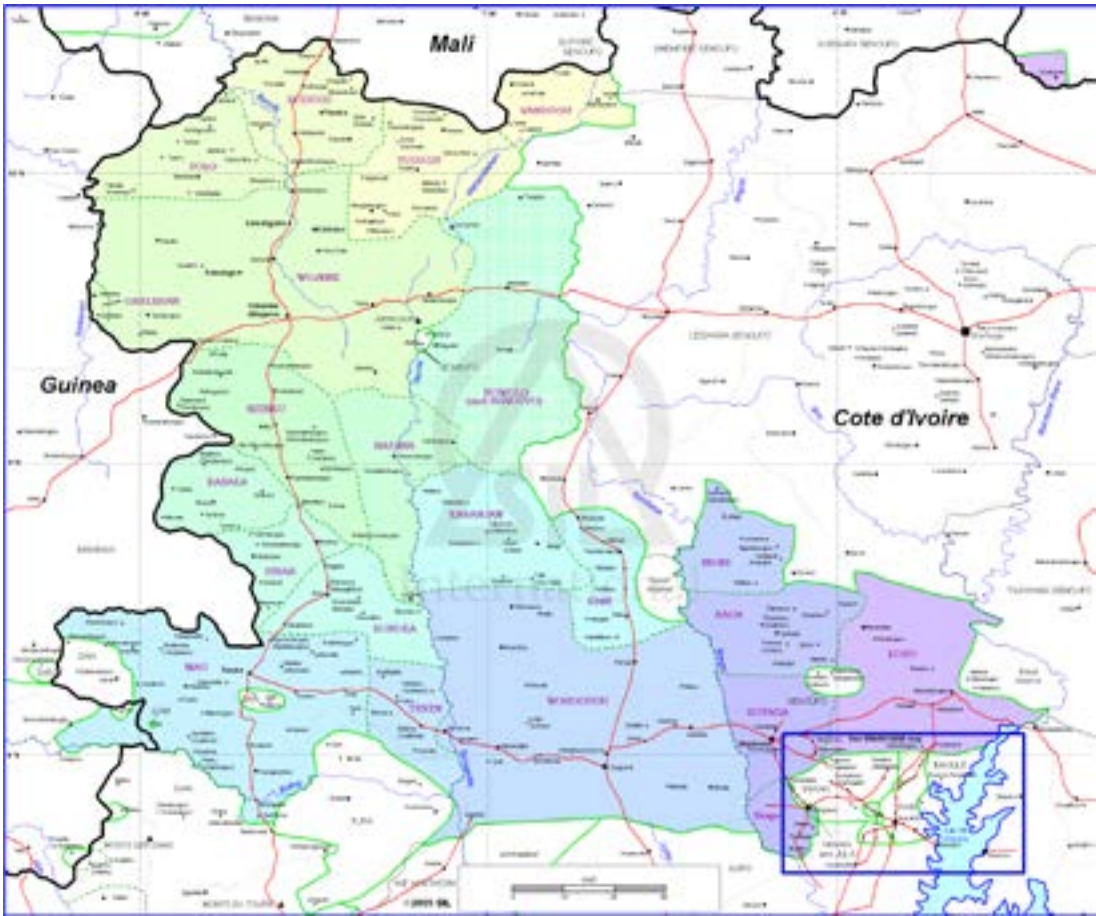


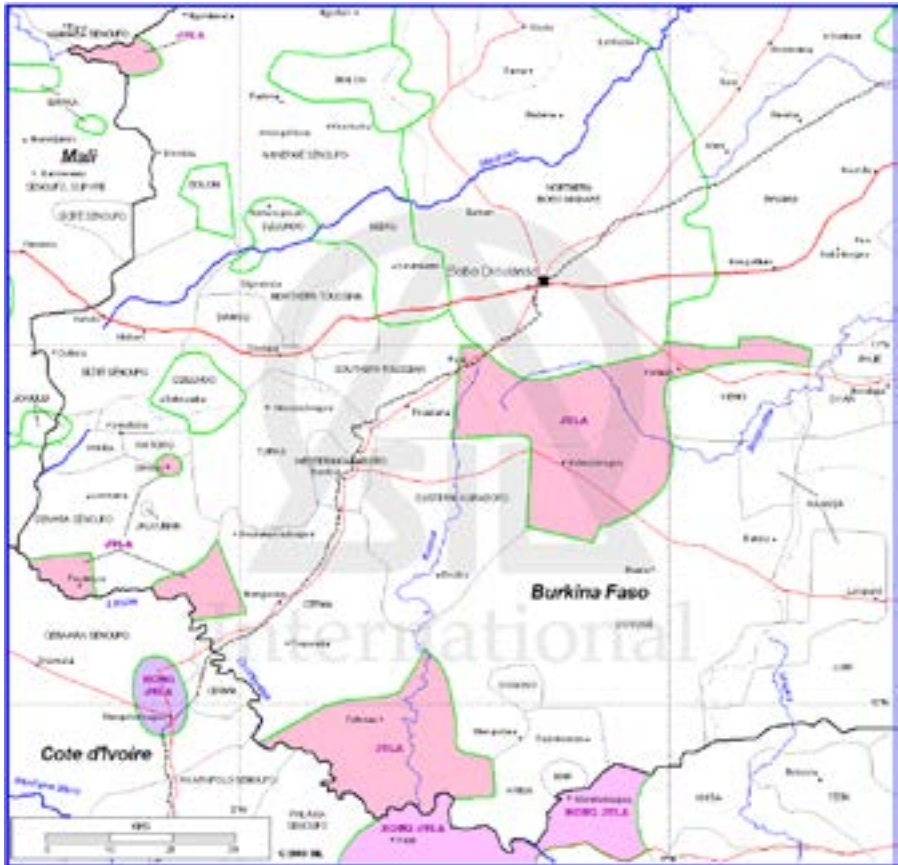
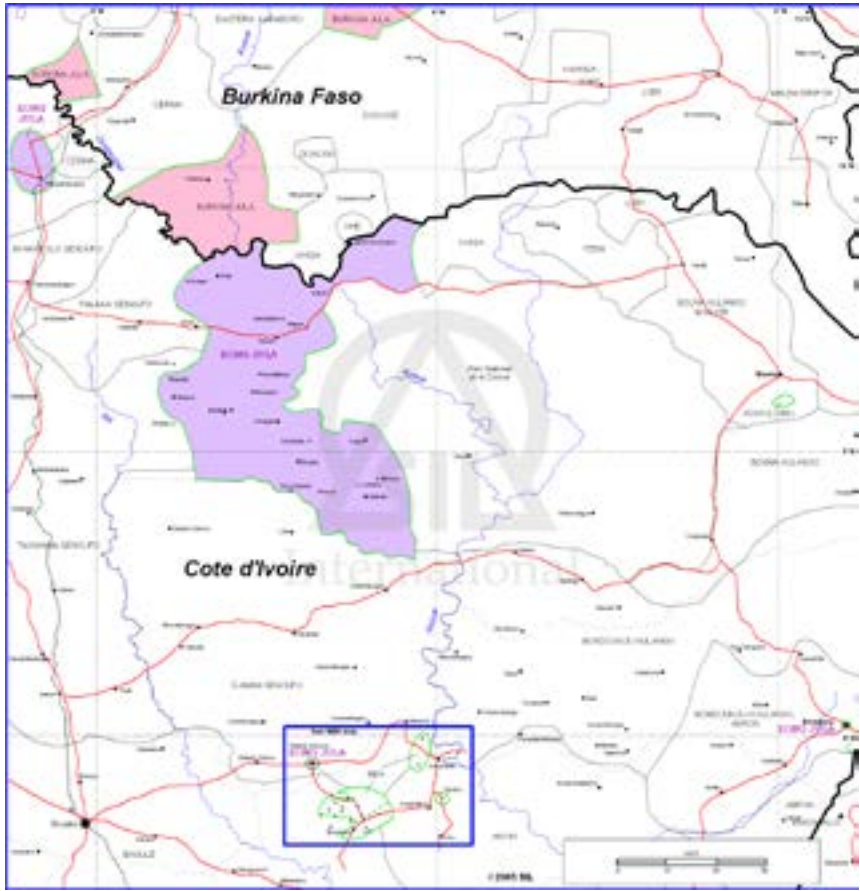
[Back to List](#)



Mandé Language Family (Manding)
Manding-East, South-Eastern Manding, Forest Maninka
Manding-East, North-Eastern Manding, Bamana, Urban
koine, Jula of Burkina Faso
Manding-East, North-Eastern Manding, Jula of Kong

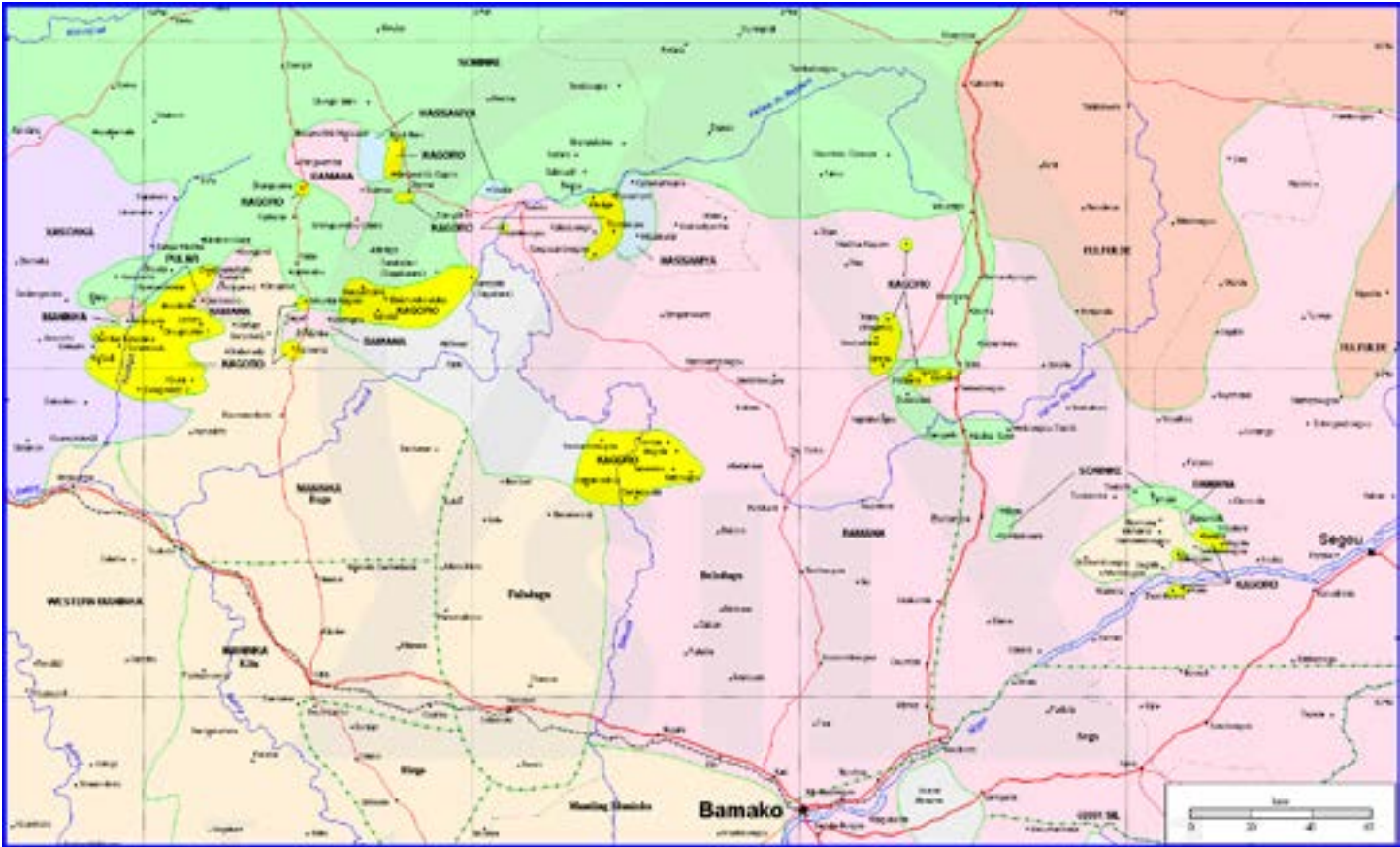
Genetic Relations	Language Name	Dialect Name
West		
Central-Southwestern		
Central		
Manding-Jogo		
Manding-Vai		
Manding-Mokole		
Manding		
Manding-East		
North-Eastern Manding		
	JULA OF KONG	



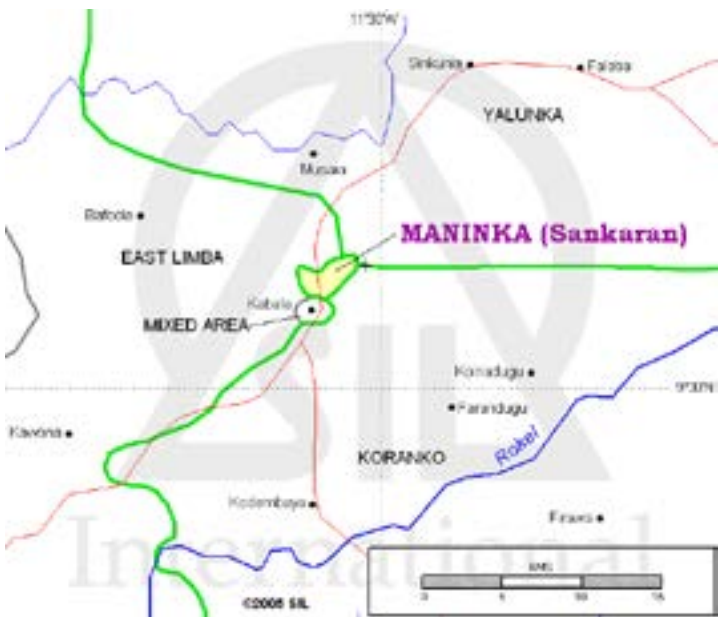
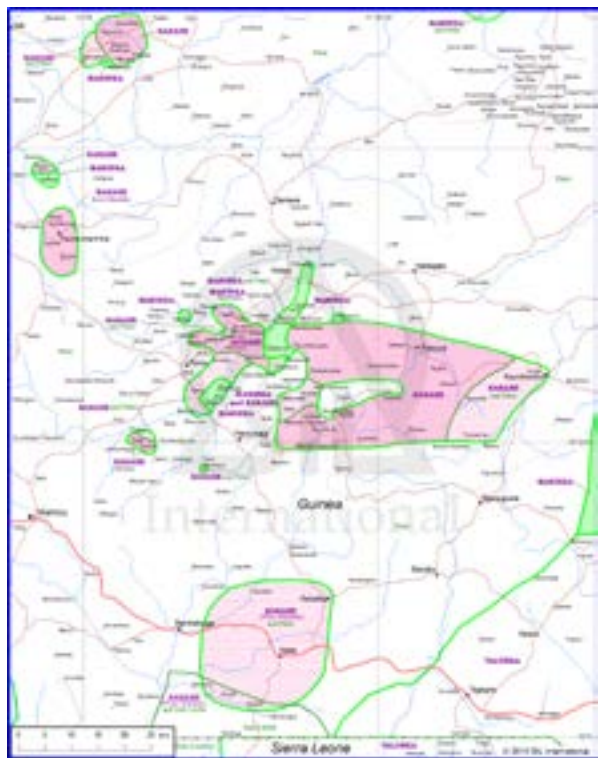


Mandé Language Family
West, Central-Southwestern, Central, Manding-Jogo,
Manding-Vai, Manding-Mokole,
Manding, Manding-West, Kagoro

Genetic Relations	Language Name	Dialect Name
West		
Central-Southwestern		
Central		
Manding-Jogo		
Manding-Vai		
Manding-Mokole		
Manding		
Manding-West		
	MANDINKA	
	KASONKA	
	MANINKA	
	KAGORO	
	JAHANKA	

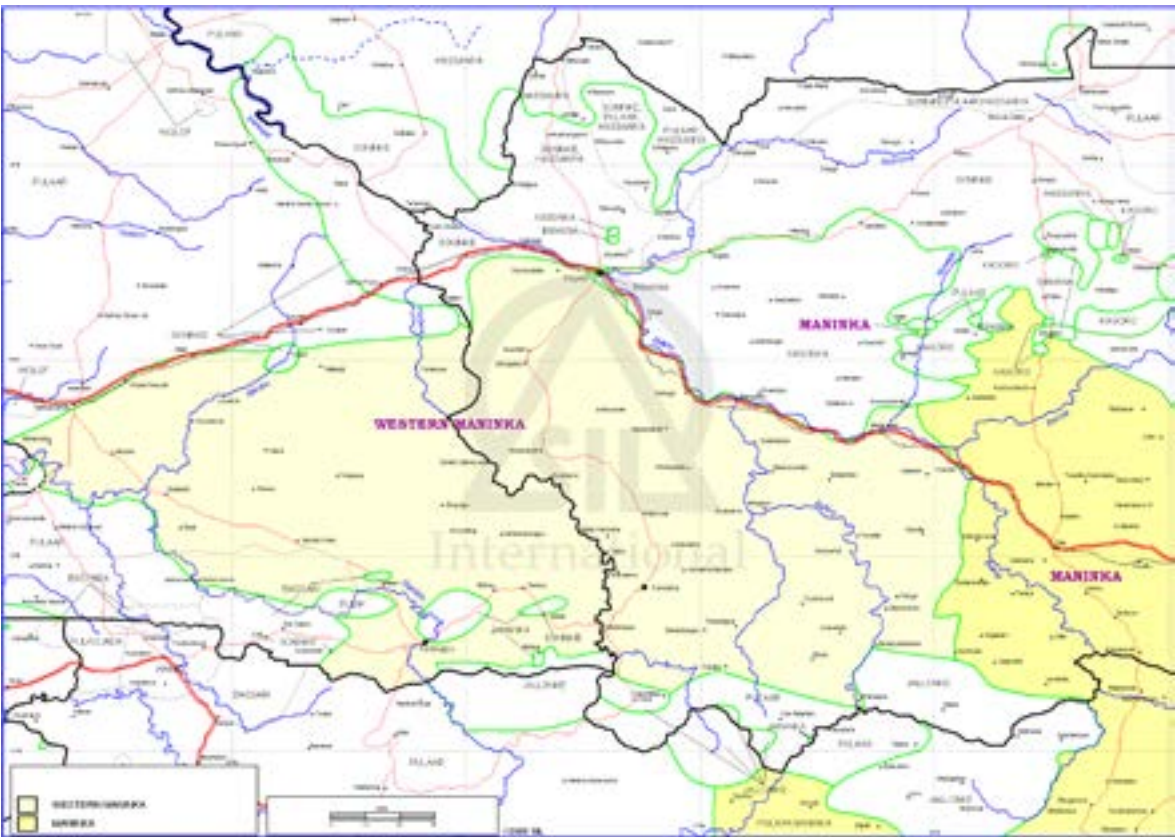


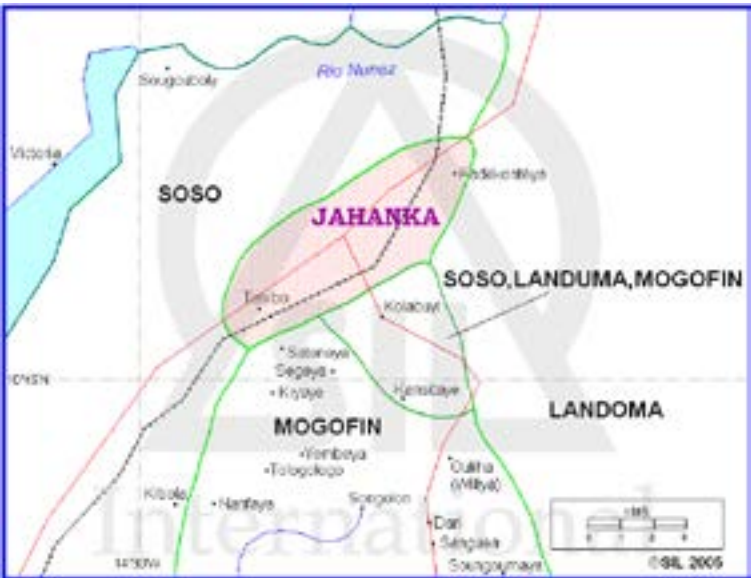
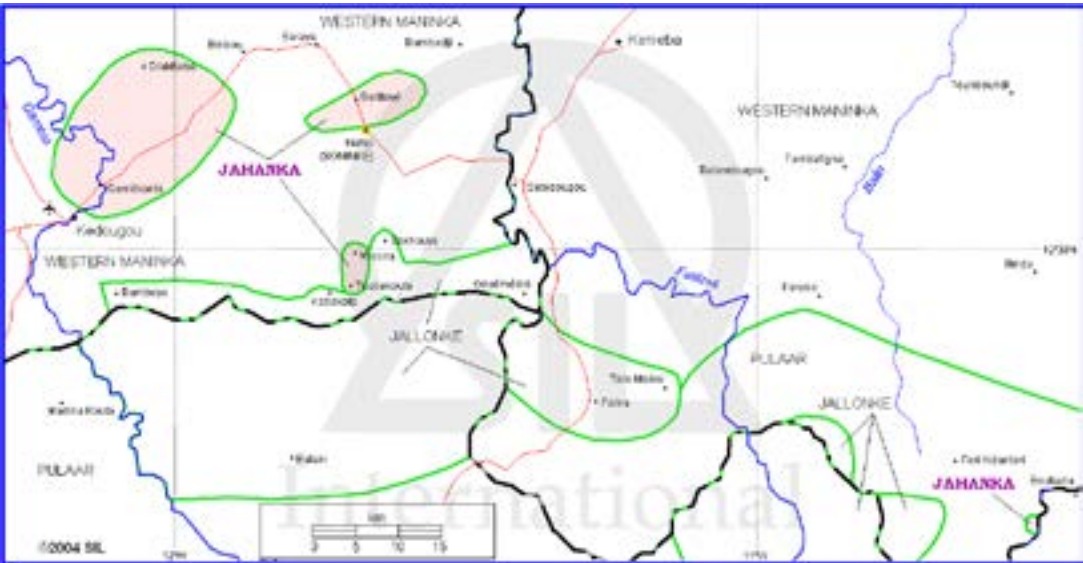
Mandé Language Family (Manding)
Manding-West, Maninka (Guinea NE)
Manding-West, Maninka (Guinea Central)
Manding-West, Maninka (Guinea SE)



Mandé Language Family (Manding)
Manding-West, Western Maninka
Manding-West, Xasonka
Manding-West, Jahanka (Western)
Manding-West, Jahanka (Eastern)

Genetic Relations	Language Name	Dialect Name
West		
Central-Southwestern		
Central		
Manding-Jogo		
Manding-Vai		
Manding-Mokole		
Manding		
Manding-West		
	MANDINKA	
	XASONKA	
	MANINKA	
	KAGORO	
	JAHANKA	





Mandé Language Family (Manding)
Manding-West, Mandinka



[Back to List](#)

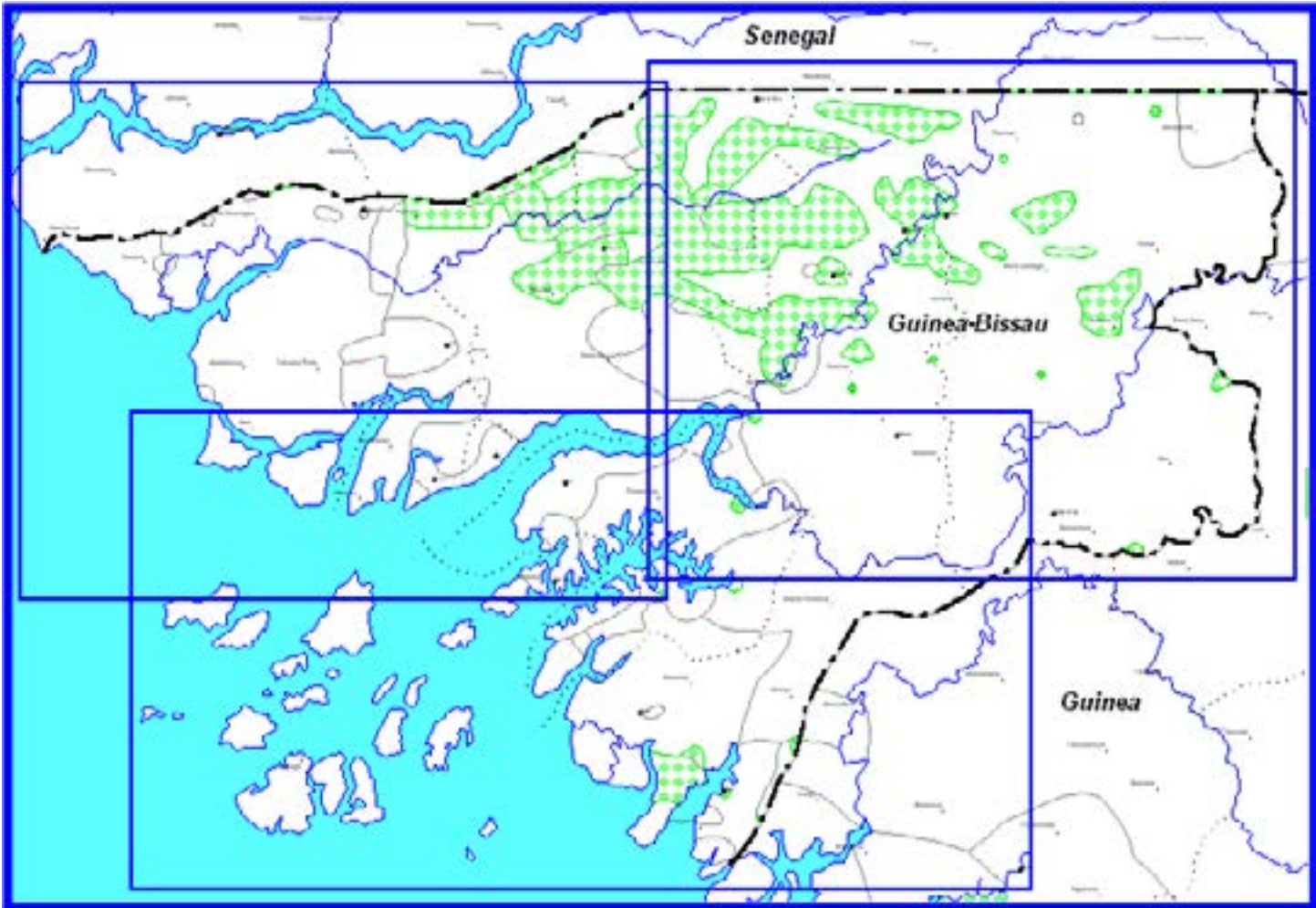
GEOGRAPHIC LEGEND

- Mande language areas
- Mande dialect boundaries
- Non-Mande language areas
- Rivers
- Railroads
- Major roads
- Minor roads
- Lakes
- International borders
- Province borders
- ✈ Airports
- ▲ Mountains
- Populated places or villages
- Built up areas
- Medium metroplexes or cities
- Large metroplexes or cities
- ★ Capitals

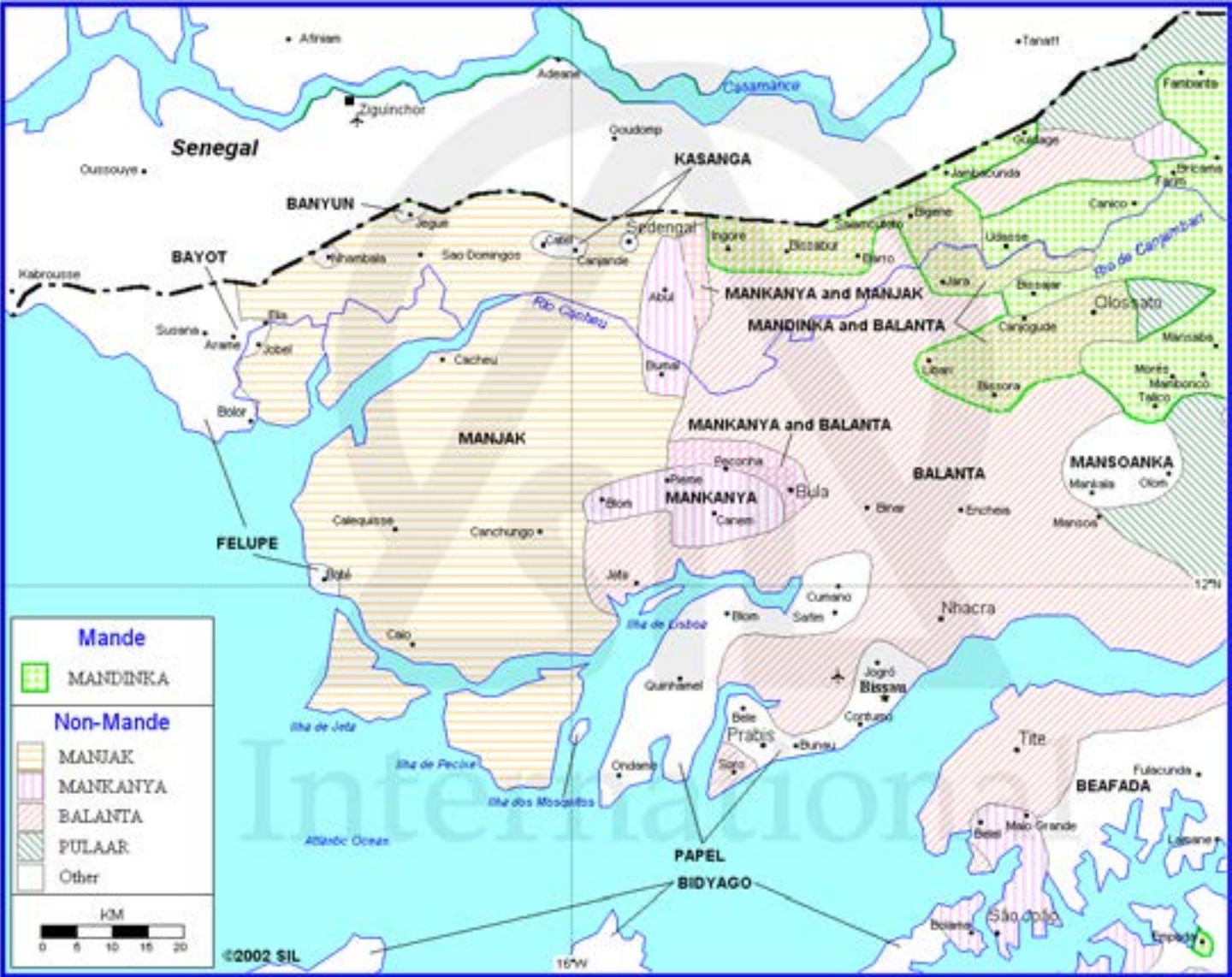
Mandé Language Family

West, Central-Southwestern, Central, Manding-Jogo, Manding-Vai, Manding-Mokole, Manding, Manding-West, Mandinka (in Guinea-Bissau)

Genetic Relations	Language Name	Dialect Name
West		
Central-Southwestern		
Central		
Manding-Jogo		
Manding-Vai		
Manding-Mokole		
Manding		
Manding-West		
	MANDINKA	
	KASONKA	
	MANINKA	
	KAGORO	

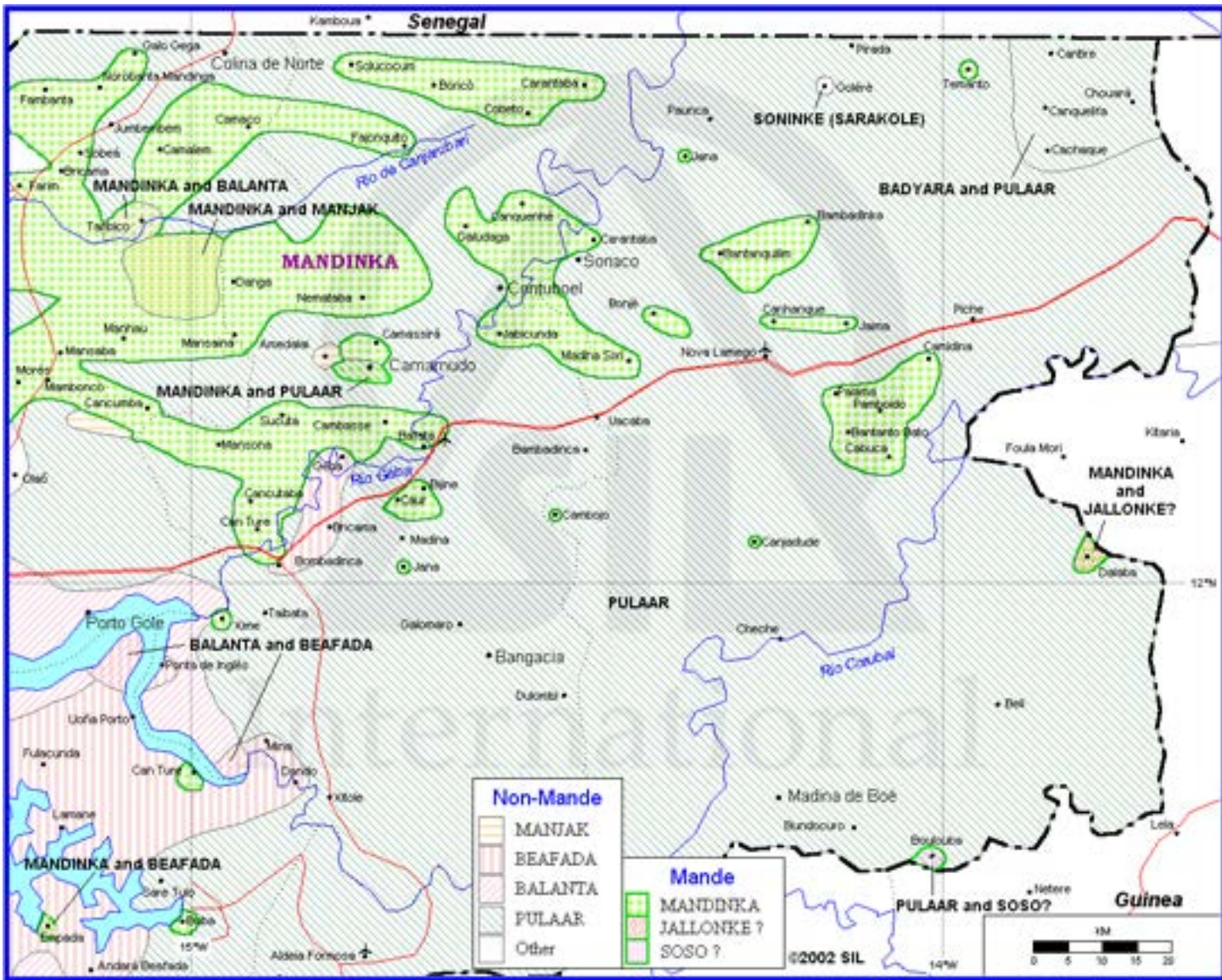


Guinea-Bissau
Western



[Back to List](#)

Guinea-Bissau
Eastern



Guinea-Bissau
Southern

