



?

?

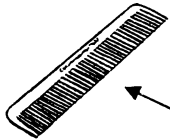


¿Ndexe

nani

ya'a?

?



?

Mixteco de Santa Lucía Monteverde

¿Ndexe nani ya'a?

¿Cómo se llama esto?

Mixteco de Santa Lucía Monteverde, Putla, Oaxaca

Colaboradores: Varios hablantes de Agua del Toro, Santa Lucía Monteverde

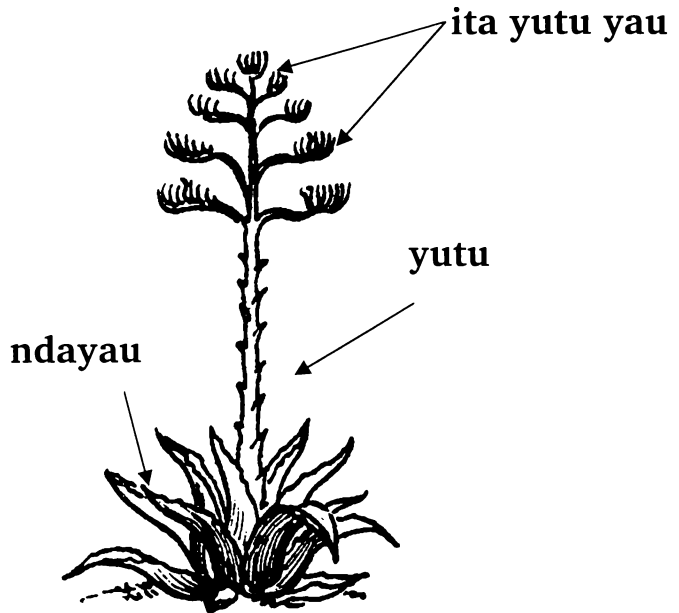
Asesores lingüísticos: Martin Eberle y Vivian Eberle-Cruz,
Instituto Lingüístico de Verano, A.C.

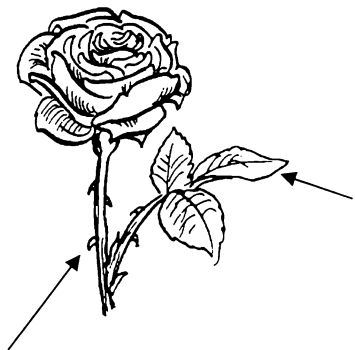
Versión preliminar
Noviembre de 2008
25 ejemplares

Ya'a nani-yo ndexe kaka'an-yo jiin siin siin
ndatiñu.

Kuni-yo je tutu ya'a chindei ndi'i ñayivi
Santa Lucía Monteverde je ka'an sasau je na
naku'un ini-de ndi'i tnu'u je ketiñu-de jiin
sasau-de, de na keje-de ka'u-de de tee-de ndi'i
je ini-de jiin yu'u maa-de.

De sukuan sini na stnee-de nuu se'e-de chi
luu xiin ka sasau vi.

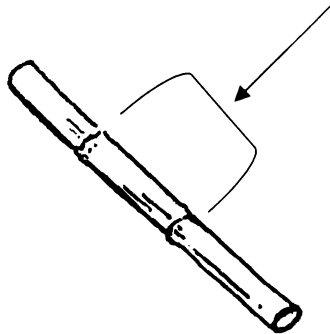




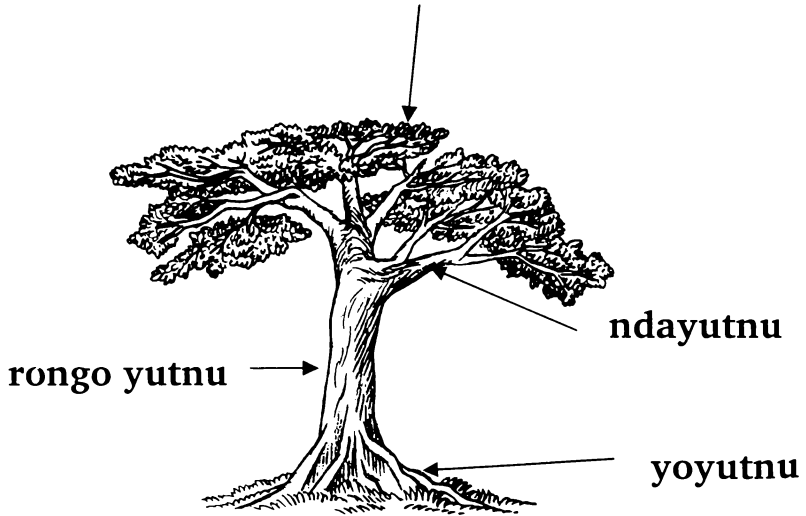
iñu ita

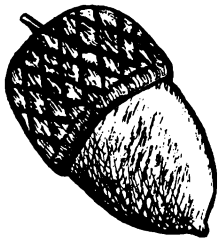
ndaita

vau ndoo



nda'a ndi'i yutnu



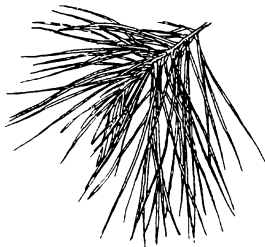


chi'ngi

tindika

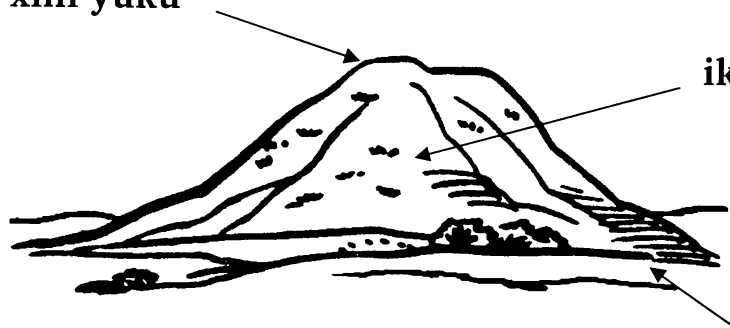


chiku'lu yutnu



ndanuyuje

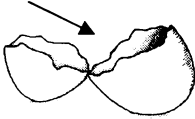
xini yuku



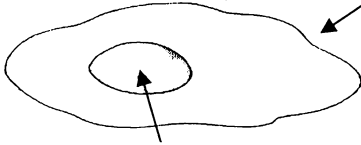
ika yuku

jeyuku

yiki ndivi



ndivi kuijin

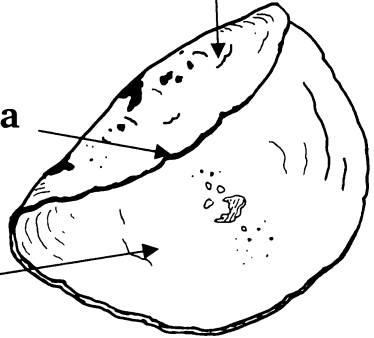


ndivi kuaan

yata ista

yuista

nuista



istni yakuii



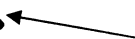
xini aju

nu'u aju

yondekin



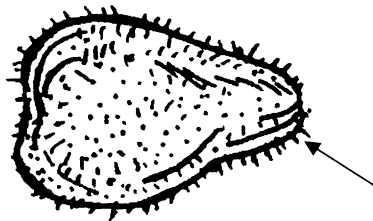
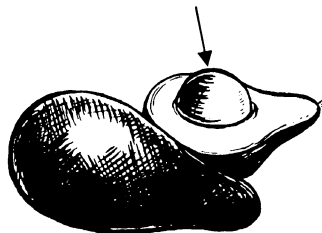
ndandekin





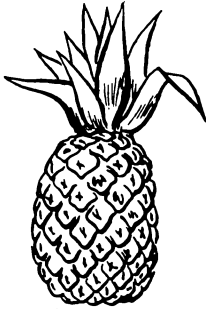
ndiyo yikin

yiti tichi



iñu naña

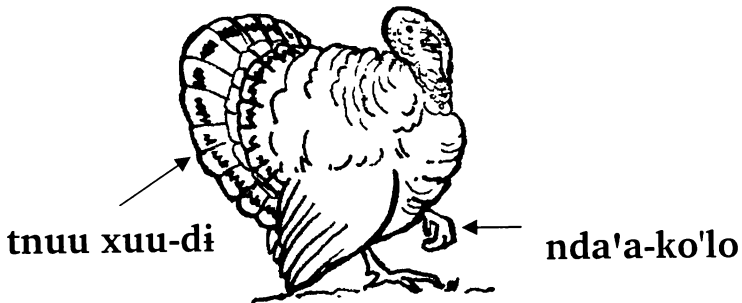
ndaviji



xuviji



soo tikuee



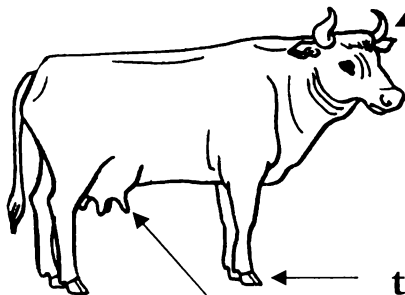
kutu kini



su'ma-di

je'e nuu-di

je'e yata-di

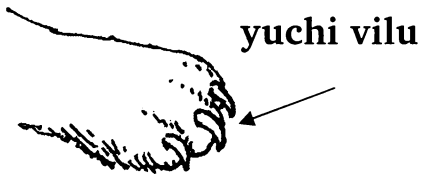


ndiki-di

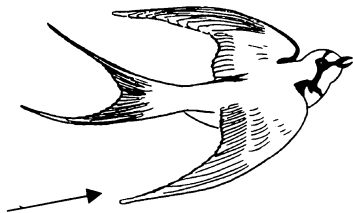
ndoson-di

te'ya-di

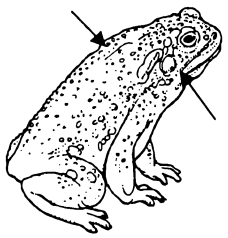




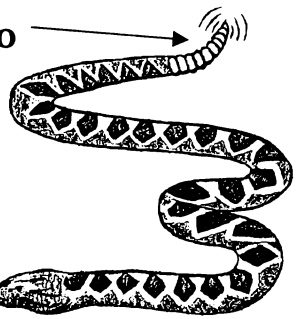
nda'a iso



ndi'yi li'yi



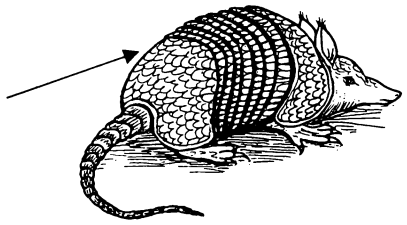
xi'yo koo

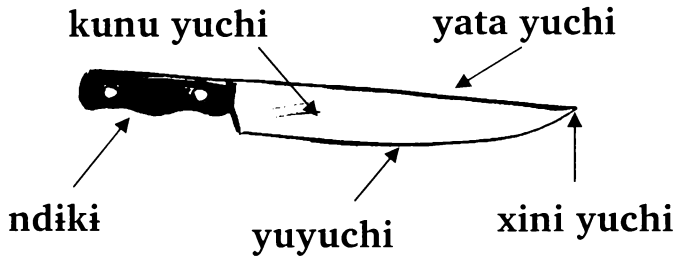
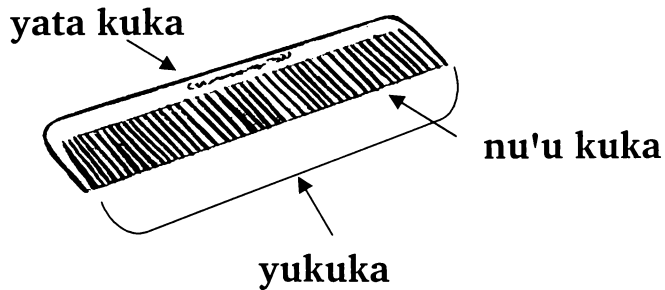


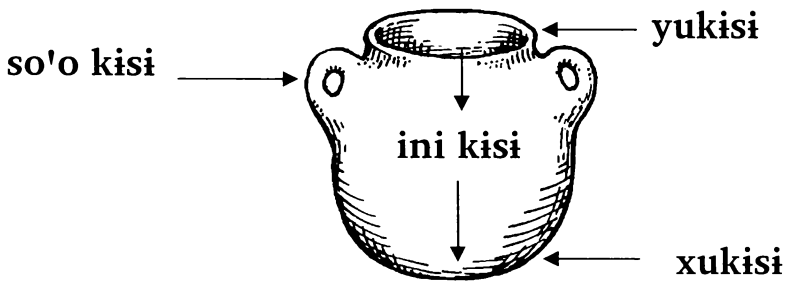
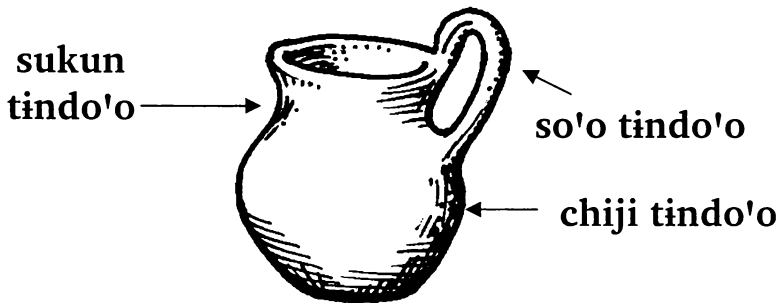
iñu-di



yiki yakuin







Descripción: En este libro se puede aprender y recordar cómo se llaman las partes de diferentes cosas y animales.

TA